

## Product datasheet for **TA350623**

### Amylin (IAPP) Rabbit Polyclonal Antibody

#### Product data:

Product Type:	Primary Antibodies
Applications:	IHC
Recommended Dilution:	IHC: 50-200 Positive control: Human liver cancer Predicted cell location: Cytoplasm
Reactivity:	Human, Mouse, Rat
Host:	Rabbit
Isotype:	IgG
Clonality:	Polyclonal
Immunogen:	Synthetic peptide of human IAPP
Formulation:	pH7.4 PBS, 0.05% NaN <sub>3</sub> , 40% Glycerol
Concentration:	lot specific
Purification:	Antigen affinity purification
Conjugation:	Unconjugated
Storage:	Store at -20°C as received.
Stability:	Stable for 12 months from date of receipt.
Gene Name:	islet amyloid polypeptide
Database Link:	<a href="#">NP_000406</a> <a href="#">Entrez Gene 15874 Mouse</a> <a href="#">Entrez Gene 24476 Rat</a> <a href="#">Entrez Gene 3375 Human</a> <a href="#">P10997</a>
Background:	Islet, or insulinoma, amyloid polypeptide is commonly found in pancreatic islets of patients suffering diabetes mellitus type II, or harboring an insulinoma. While the association of amylin with the development of type II diabetes has been known for some time, a direct causative role for amylin has been harder to establish. Studies suggest that amylin, like the related beta-amyloid (Aβ) associated with Alzheimer's disease, can induce apoptotic cell-death in particular cultured cells, an effect that may be relevant to the development of type II diabetes.
Synonyms:	DAP; IAP

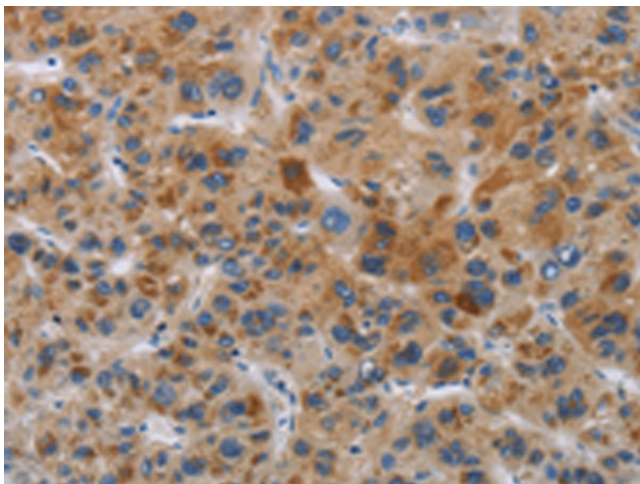


[View online »](#)

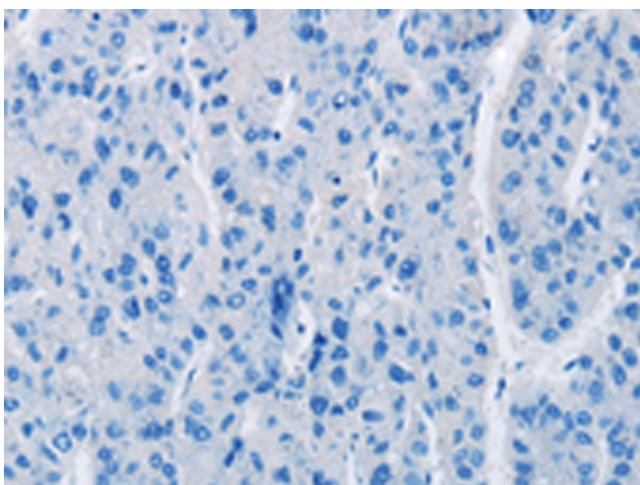
Protein Families: Druggable Genome, Secreted Protein

Protein Pathways: Maturity onset diabetes of the young

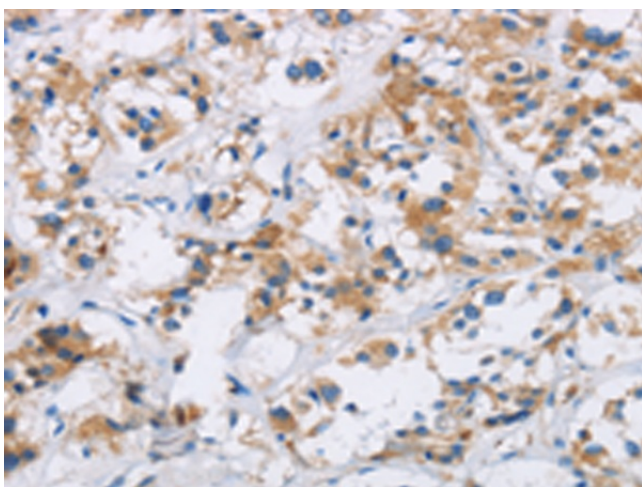
**Product images:**



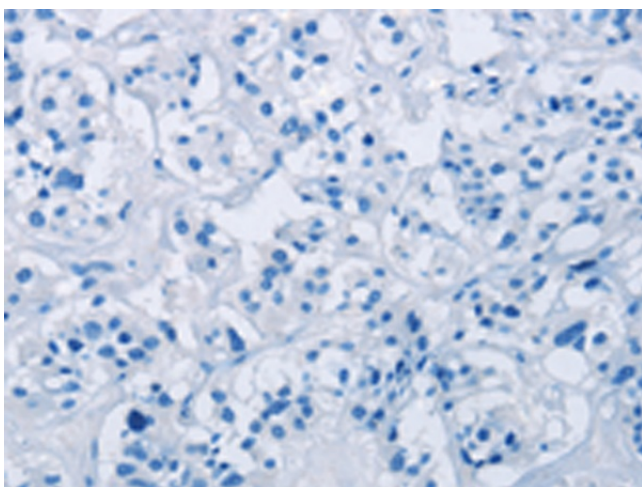
Immunohistochemistry of paraffin-embedded Human liver cancer tissue using TA350623 (IAPP Antibody) at dilution 1/40 (Original magnification: ×200)



Immunohistochemistry of paraffin-embedded Human liver cancer tissue using TA350623 (IAPP Antibody) at dilution 1/40, treated with synthetic peptide. (Original magnification: ×200)



Immunohistochemistry of paraffin-embedded Human thyroid cancer tissue using TA350623 (IAPP Antibody) at dilution 1/40 (Original magnification:  $\times 200$ )



Immunohistochemistry of paraffin-embedded Human thyroid cancer tissue using TA350623 (IAPP Antibody) at dilution 1/40, treated with synthetic peptide. (Original magnification:  $\times 200$ )