

## Product datasheet for **TA350614**

### VPS37A Rabbit Polyclonal Antibody

#### Product data:

Product Type:	Primary Antibodies
Applications:	IHC, WB
Recommended Dilution:	WB: 500-2000 WB positive control: Human bladder carcinoma and fetal liver tissue IHC: 25-100 Positive control: Human liver cancer Predicted cell location: Cytoplasm
Reactivity:	Human, Mouse
Host:	Rabbit
Isotype:	IgG
Clonality:	Polyclonal
Immunogen:	Fusion protein of human VPS37A
Formulation:	pH7.4 PBS, 0.05% NaN <sub>3</sub> , 40% Glycerol
Concentration:	lot specific
Purification:	Antigen affinity purification
Conjugation:	Unconjugated
Storage:	Store at -20°C as received.
Stability:	Stable for 12 months from date of receipt.
Predicted Protein Size:	44 kDa
Gene Name:	VPS37A, ESCRT-I subunit
Database Link:	<a href="#">NP_689628</a> <a href="#">Entrez Gene 52348 Mouse</a> <a href="#">Entrez Gene 137492 Human</a> <a href="#">Q8NEZ2</a>

**Background:** This gene belongs to the VPS37 family, and encodes a component of the ESCRT-I (endosomal sorting complex required for transport I) protein complex, required for the sorting of ubiquitinated transmembrane proteins into internal vesicles of multivesicular bodies. Expression of this gene is downregulated in hepatocellular carcinoma, and mutations in this gene are associated with autosomal recessive spastic paraplegia-53.

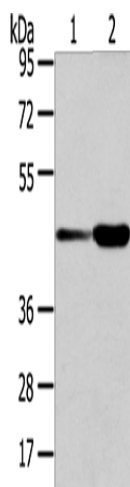


[View online »](#)

Synonyms: HCRP1; PQBP2; SPG53

Protein Pathways: Endocytosis

### Product images:



Gel: 8%SDS-PAGE

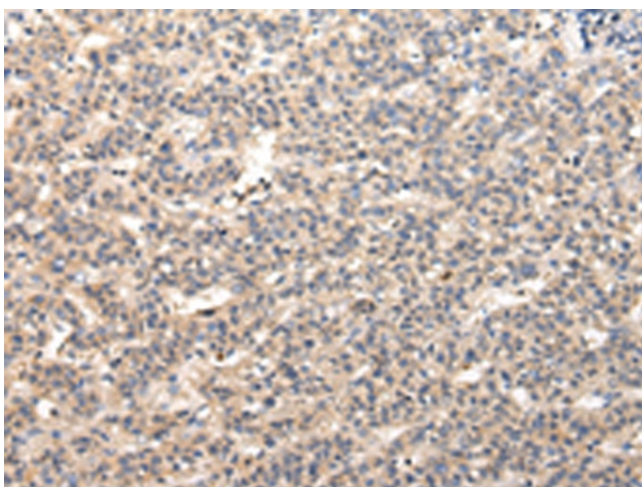
Lysate: 40  $\mu$ g

Lane 1-2: Human bladder carcinoma and fetal liver tissue

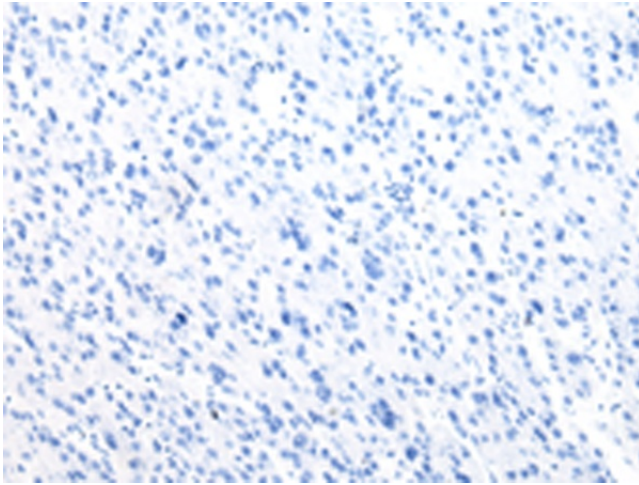
Primary antibody: TA350614 (VPS37A Antibody) at dilution 1/300

Secondary antibody: Goat anti rabbit IgG at 1/8000 dilution

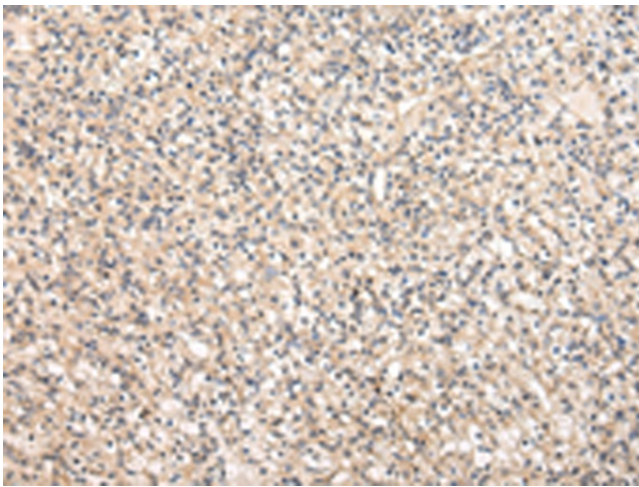
Exposure time: 15 seconds



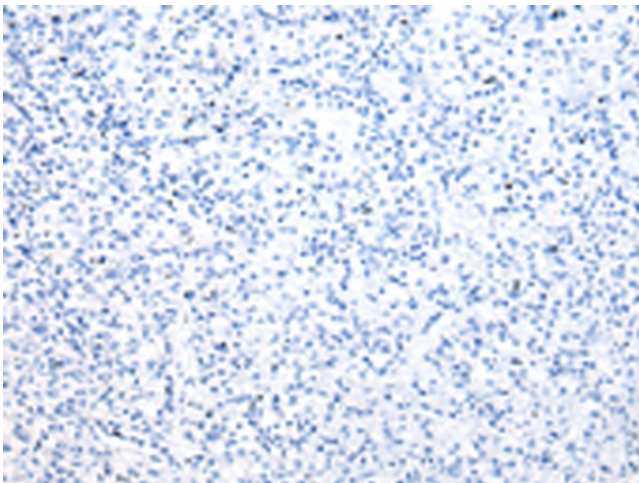
Immunohistochemistry of paraffin-embedded Human liver cancer tissue using TA350614 (VPS37A Antibody) at dilution 1/30 (Original magnification:  $\times$ 200)



Immunohistochemistry of paraffin-embedded Human liver cancer tissue using TA350614 (VPS37A Antibody) at dilution 1/30, treated with fusion protein. (Original magnification: ×200)



Immunohistochemistry of paraffin-embedded Human prostate cancer tissue using TA350614 (VPS37A Antibody) at dilution 1/30 (Original magnification: ×200)



Immunohistochemistry of paraffin-embedded Human prostate cancer tissue using TA350614 (VPS37A Antibody) at dilution 1/30, treated with fusion protein. (Original magnification: ×200)