

## Product datasheet for **TA350604**

### VPS16 Rabbit Polyclonal Antibody

#### Product data:

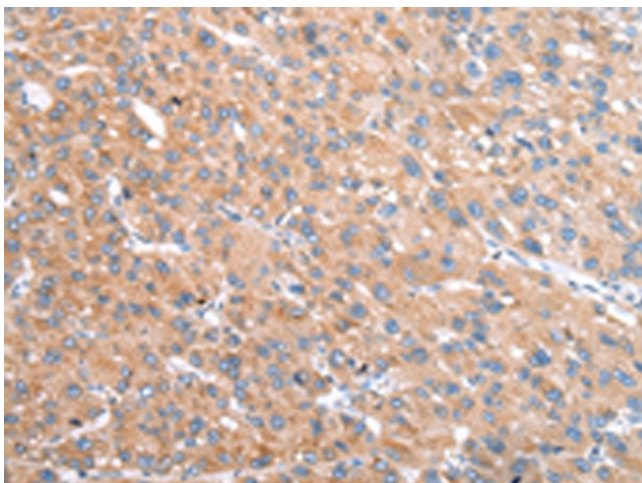
Product Type:	Primary Antibodies
Applications:	IHC
Recommended Dilution:	IHC: 25-100 Positive control: Human liver cancer Predicted cell location: Cytoplasm
Reactivity:	Human, Mouse
Host:	Rabbit
Isotype:	IgG
Clonality:	Polyclonal
Immunogen:	Fusion protein of human VPS16
Formulation:	pH7.4 PBS, 0.05% NaN <sub>3</sub> , 40% Glycerol
Concentration:	lot specific
Purification:	Antigen affinity purification
Conjugation:	Unconjugated
Storage:	Store at -20°C as received.
Stability:	Stable for 12 months from date of receipt.
Gene Name:	VPS16, CORVET/HOPS core subunit
Database Link:	<a href="#">NP_536338</a> <a href="#">Entrez Gene 80743 Mouse</a> <a href="#">Entrez Gene 64601 Human</a> <a href="#">Q9H269</a>
Background:	Vesicle mediated protein sorting plays an important role in segregation of intracellular molecules into distinct organelles. Genetic studies in yeast have identified more than 40 vacuolar protein sorting (VPS) genes involved in vesicle transport to vacuoles. This gene encodes the human homolog of yeast class C Vps16 protein. The mammalian class C Vps proteins are predominantly associated with late endosomes/lysosomes, and like their yeast counterparts, may mediate vesicle trafficking steps in the endosome/lysosome pathway. Two transcript variants encoding different isoforms have been found for this gene.
Synonyms:	hVPS16



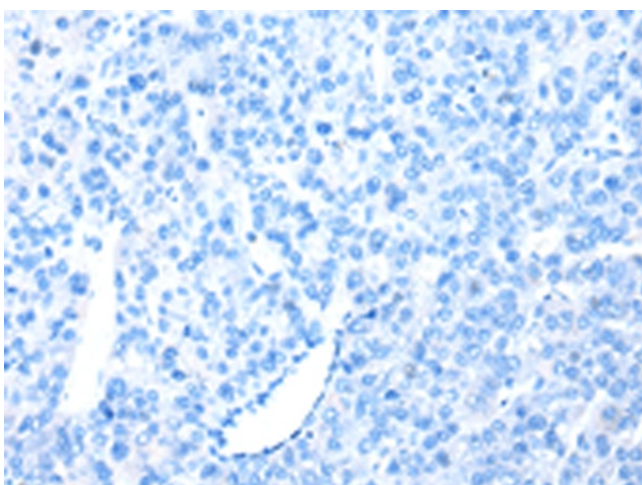
[View online »](#)

Protein Families: Druggable Genome

### Product images:



Immunohistochemistry of paraffin-embedded Human liver cancer tissue using TA350604 (VPS16 Antibody) at dilution 1/35 (Original magnification:  $\times 200$ )



Immunohistochemistry of paraffin-embedded Human liver cancer tissue using TA350604 (VPS16 Antibody) at dilution 1/35, treated with fusion protein. (Original magnification:  $\times 200$ )