

## Product datasheet for **TA350603S**

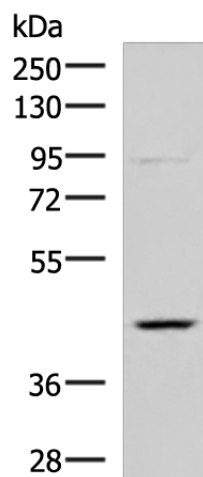
### VSIG8 Rabbit Polyclonal Antibody

#### Product data:

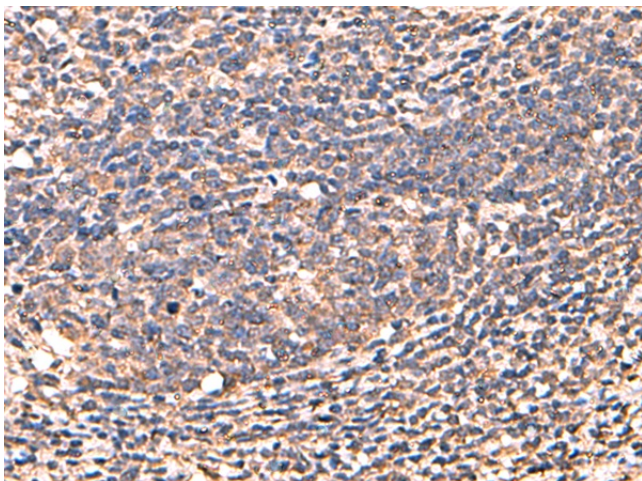
Product Type:	Primary Antibodies
Applications:	IHC, WB
Recommended Dilution:	WB: 500-2000 WB positive control: Mouse kidney tissue lysate IHC: 50-300 Positive control: Human cervical cancer Predicted cell location: Cytoplasm
Reactivity:	Human, Mouse
Host:	Rabbit
Isotype:	IgG
Clonality:	Polyclonal
Immunogen:	Fusion protein of human VSIG8
Formulation:	pH7.4 PBS, 0.05% NaN <sub>3</sub> , 40% Glycerol
Purification:	Antigen affinity purification
Conjugation:	Unconjugated
Storage:	Store at -20°C as received.
Stability:	Stable for 12 months from date of receipt.
Predicted Protein Size:	44 kDa
Gene Name:	V-set and immunoglobulin domain containing 8
Database Link:	<a href="#">NP_001013683</a> <a href="#">Entrez Gene 240916</a> <a href="#">MouseEntrez Gene 391123</a> <a href="#">Human P0DPA2</a>
Background:	VSIG8 contains 2 Ig-like V-type (immunoglobulin-like) domains. VSIG8 is single-pass type I membrane protein. The function of the VSIG8 protein remains unknown.
Synonyms:	OTTHUMP00000033460; V-set and immunoglobulin domain containing 8
Protein Families:	Transmembrane



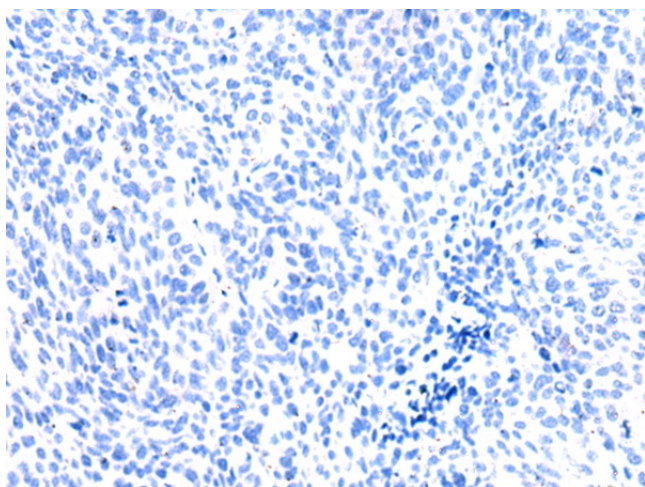
[View online »](#)

**Product images:**

Gel: 8%SDS-PAGE  
Lysate: 40  $\mu$ g  
Lane: Mouse kidney tissue lysate  
Primary antibody: [TA350603] (VSIG8 Antibody) at dilution 1/800  
Secondary antibody: Goat anti rabbit IgG at 1/5000 dilution  
Exposure time: 7 seconds



Immunohistochemistry of paraffin-embedded Human cervical cancer tissue using [TA350603] (VSIG8 Antibody) at dilution 1/55 (Original magnification:  $\times$ 200)



Immunohistochemistry of paraffin-embedded Human cervical cancer tissue using [TA350603] (VSIG8 Antibody) at dilution 1/55, treated with fusion protein. (Original magnification:  $\times 200$ )