

## Product datasheet for **TA350599**

### VCAM1 Rabbit Polyclonal Antibody

#### Product data:

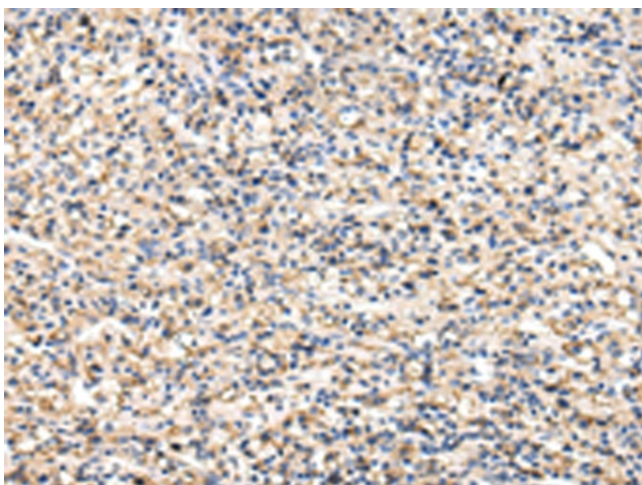
|                       |   |
|-----------------------|---|
| Product Type:         | Primary Antibodies  |
| Applications:         | IHC   |
| Recommended Dilution: | IHC: 25-100<br>Positive control: Human prostate cancer<br>Predicted cell location: Cytoplasm and Cell membrane  |
| Reactivity:           | Human, Mouse, Rat   |
| Host:                 | Rabbit  |
| Isotype:              | IgG   |
| Clonality:            | Polyclonal  |
| Immunogen:            | Fusion protein of human VCAM1   |
| Formulation:          | pH7.4 PBS, 0.05% NaN <sub>3</sub> , 40% Glycerol  |
| Concentration:        | lot specific  |
| Purification:         | Antigen affinity purification   |
| Conjugation:          | Unconjugated  |
| Storage:              | Store at -20°C as received.   |
| Stability:            | Stable for 12 months from date of receipt.  |
| Gene Name:            | vascular cell adhesion molecule 1   |
| Database Link:        | <a href="#">NP_542413</a><br><a href="#">Entrez Gene 22329 Mouse</a> <a href="#">Entrez Gene 25361 Rat</a> <a href="#">Entrez Gene 7412 Human</a><br><a href="#">P19320</a>   |
| Background:           | This gene is a member of the Ig superfamily and encodes a cell surface sialoglycoprotein expressed by cytokine-activated endothelium. This type I membrane protein mediates leukocyte-endothelial cell adhesion and signal transduction, and may play a role in the development of atherosclerosis and rheumatoid arthritis. Three alternatively spliced transcripts encoding different isoforms have been described for this gene. |
| Synonyms:             | CD106; INCAM-100  |
| Protein Families:     | Druggable Genome, ES Cell Differentiation/IPS, Transmembrane  |



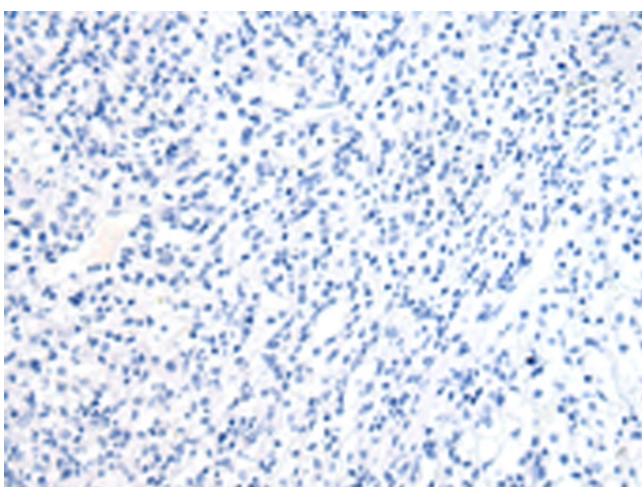
[View online »](#)

Protein Pathways: Cell adhesion molecules (CAMs), Leukocyte transendothelial migration

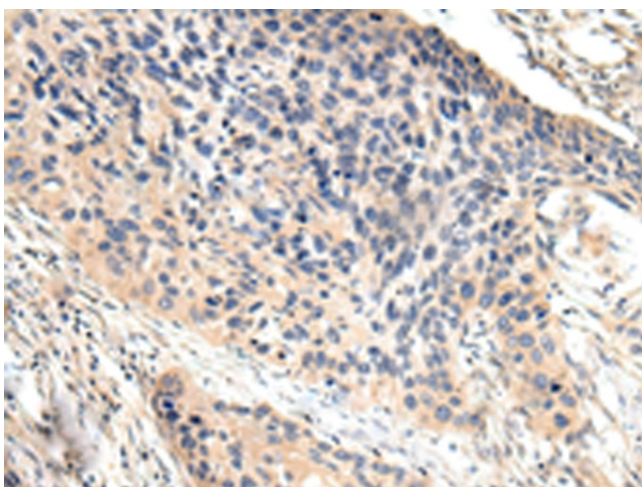
**Product images:**



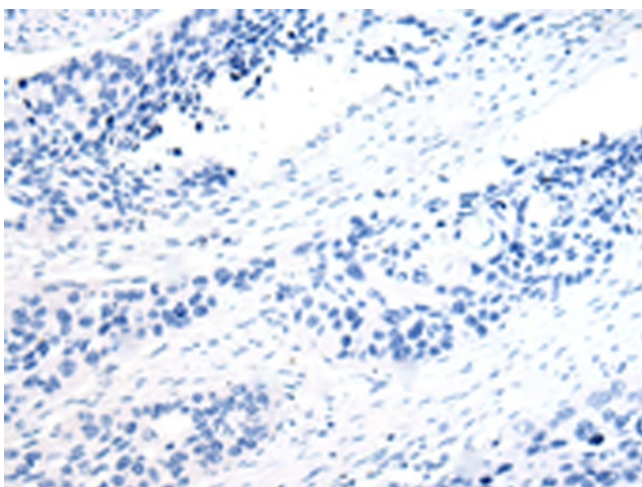
Immunohistochemistry of paraffin-embedded Human prostate cancer tissue using TA350599 (VCAM1 Antibody) at dilution 1/30 (Original magnification:  $\times 200$ )



Immunohistochemistry of paraffin-embedded Human prostate cancer tissue using TA350599 (VCAM1 Antibody) at dilution 1/30, treated with fusion protein. (Original magnification:  $\times 200$ )



Immunohistochemistry of paraffin-embedded Human esophagus cancer tissue using TA350599 (VCAM1 Antibody) at dilution 1/30 (Original magnification:  $\times 200$ )



Immunohistochemistry of paraffin-embedded Human esophagus cancer tissue using TA350599 (VCAM1 Antibody) at dilution 1/30, treated with fusion protein. (Original magnification:  $\times 200$ )