

Product datasheet for **TA350598**

VASH2 Rabbit Polyclonal Antibody

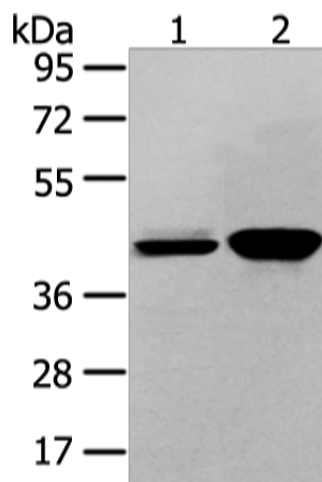
Product data:

Product Type:	Primary Antibodies
Applications:	WB
Recommended Dilution:	WB: 500-2000 WB positive control: Hela and 293T cell
Reactivity:	Human, Mouse
Host:	Rabbit
Isotype:	IgG
Clonality:	Polyclonal
Immunogen:	Full length fusion protein
Formulation:	pH7.4 PBS, 0.05% NaN ₃ , 40% Glycerol
Concentration:	lot specific
Purification:	Antigen affinity purification
Conjugation:	Unconjugated
Storage:	Store at -20°C as received.
Stability:	Stable for 12 months from date of receipt.
Predicted Protein Size:	40 kDa
Gene Name:	vasohibin 2
Database Link:	NP_079025 Entrez Gene 79805 Human Q86V25
Background:	Vasohibin-2, also known as VASH2, is a 355 amino acid protein belonging to the Vasohibin family. Expressed in various embryonic organs, Vasohibin-2 can be detected during embryonic weeks six through twelve and is found in vessels of 20-week embryonic organs as well as in endothelial cells of neonatal large vessels. Induced by VEGF, Vasohibin-2 is an angiogenesis inhibitor and interferes with the proliferation, migration and network formation by endothelial cells.
Synonyms:	RP11-275G3.1



[View online »](#)

Product images:



Gel: 8%SDS-PAGE

Lysate: 40 μ g

Lane 1-2: HeLa and 293T cell

Primary antibody: TA350598 (VASH2 Antibody) at dilution 1/450

Secondary antibody: Goat anti rabbit IgG at 1/8000 dilution

Exposure time: 40 seconds