

Product datasheet for **TA350595**

VAMP5 Rabbit Polyclonal Antibody

Product data:

Product Type:	Primary Antibodies
Applications:	IHC, WB
Recommended Dilution:	WB: 1000-5000 WB positive control: Human normal prostate tissue IHC: 25-100 Positive control: Human liver cancer Predicted cell location: Cell membrane and Cytoplasm
Reactivity:	Human
Host:	Rabbit
Isotype:	IgG
Clonality:	Polyclonal
Immunogen:	Full length fusion protein
Formulation:	pH7.4 PBS, 0.05% NaN ₃ , 40% Glycerol
Concentration:	lot specific
Purification:	Antigen affinity purification
Conjugation:	Unconjugated
Storage:	Store at -20°C as received.
Stability:	Stable for 12 months from date of receipt.
Predicted Protein Size:	13 kDa
Gene Name:	vesicle associated membrane protein 5
Database Link:	NP_006625 Entrez Gene 10791 Human O95183

Background: Synaptobrevins/VAMPs, syntaxins, and the 25-kD synaptosomal-associated protein are the main components of a protein complex involved in the docking and/or fusion of vesicles and cell membranes. The VAMP5 gene is a member of the vesicle-associated membrane protein (VAMP)/synaptobrevin family and the SNARE superfamily. This VAMP family member may participate in vesicle trafficking events that are associated with myogenesis.



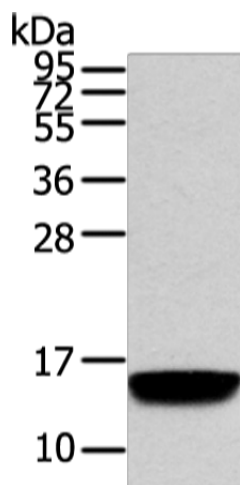
[View online >](#)

Synonyms: MYOBREVIN; myobrevin; vesicle-associated membrane protein 5; vesicle-associated membrane protein 5 (myobrevin)

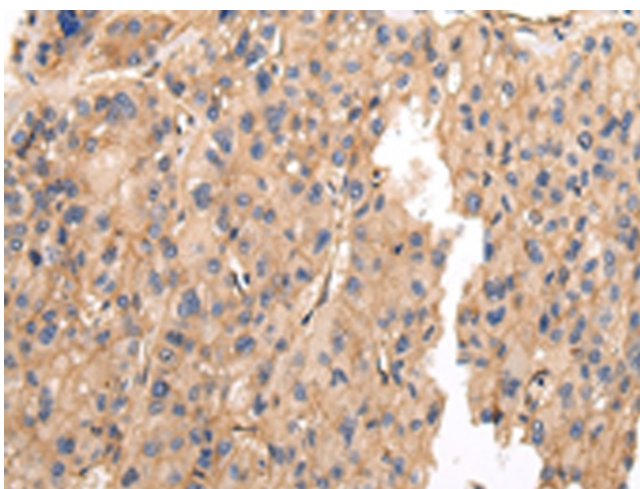
Protein Families: Transmembrane

Protein Pathways: SNARE interactions in vesicular transport

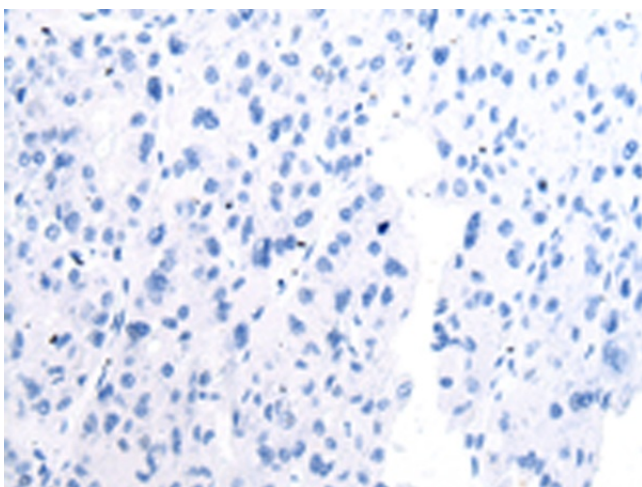
Product images:



Gel: 12%SDS-PAGE
Lysate: 40 µg
Lane: Human normal prostate tissue
Primary antibody: TA350595 (VAMP5 Antibody) at dilution 1/650
Secondary antibody: Goat anti rabbit IgG at 1/8000 dilution
Exposure time: 15 seconds



Immunohistochemistry of paraffin-embedded Human liver cancer tissue using TA350595 (VAMP5 Antibody) at dilution 1/25 (Original magnification: ×200)



Immunohistochemistry of paraffin-embedded Human liver cancer tissue using TA350595 (VAMP5 Antibody) at dilution 1/25, treated with fusion protein. (Original magnification: ×200)