

## Product datasheet for **TA350590S**

### USP15 Rabbit Polyclonal Antibody

#### Product data:

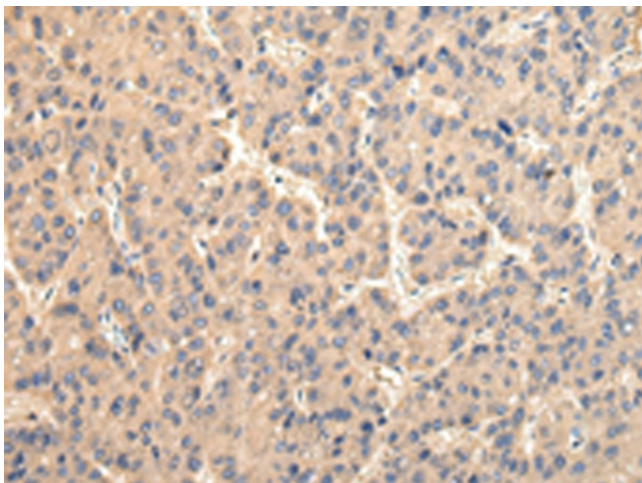
Product Type:	Primary Antibodies
Applications:	IHC
Recommended Dilution:	IHC: 25-100 Positive control: Human liver cancer Predicted cell location: Cytoplasm
Reactivity:	Human, Mouse, Rat
Host:	Rabbit
Isotype:	IgG
Clonality:	Polyclonal
Immunogen:	Fusion protein of human USP15
Formulation:	pH7.4 PBS, 0.05% NaN <sub>3</sub> , 40% GlycerolIn
Purification:	Antigen affinity purification
Conjugation:	Unconjugated
Storage:	Store at -20°C as received.
Stability:	Stable for 12 months from date of receipt.
Gene Name:	ubiquitin specific peptidase 15
Database Link:	<a href="#">NP_006304</a> <a href="#">Entrez Gene 14479 Mouse</a> <a href="#">Entrez Gene 171329 Rat</a> <a href="#">Entrez Gene 9958 Human</a> <a href="#">Q9Y4E8</a>
Background:	This gene encodes a member of the ubiquitin specific protease (USP) family of deubiquitinating enzymes. USP enzymes play critical roles in ubiquitin-dependent processes through polyubiquitin chain disassembly and hydrolysis of ubiquitin-substrate bonds. The encoded protein associates with the COP9 signalosome, and also plays a role in transforming growth factor beta signalling through deubiquitination of receptor-activated SMAD transcription factors. Alternatively spliced transcript variants encoding multiple isoforms have been observed for this gene, and a pseudogene of this gene is located on the long arm of chromosome 2.
Synonyms:	UNPH-2; UNPH4



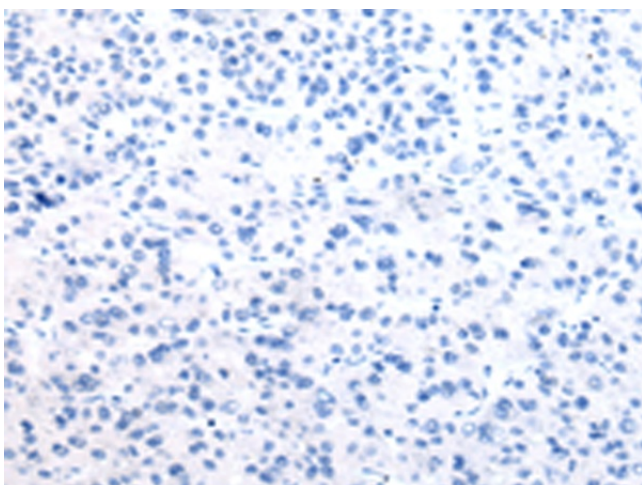
[View online »](#)

Protein Families: Druggable Genome, Protease

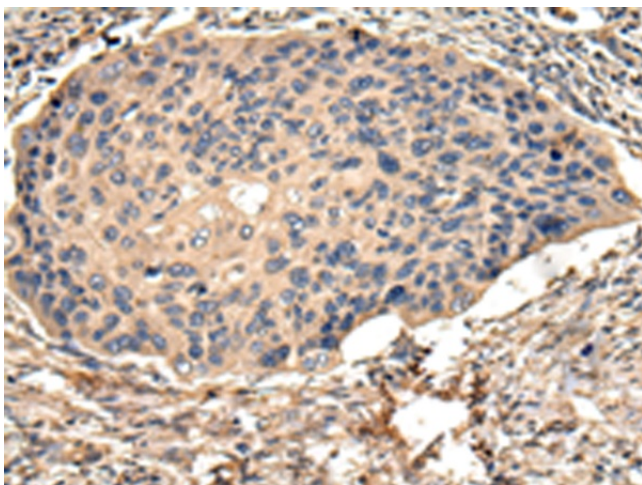
### Product images:



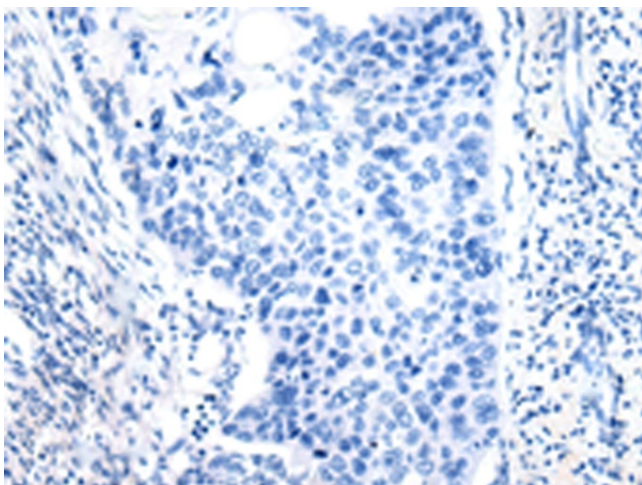
Immunohistochemistry of paraffin-embedded Human liver cancer tissue using [TA350590] (USP15 Antibody) at dilution 1/35 (Original magnification: ×200)



Immunohistochemistry of paraffin-embedded Human liver cancer tissue using [TA350590] (USP15 Antibody) at dilution 1/35, treated with fusion protein. (Original magnification: ×200)



Immunohistochemistry of paraffin-embedded Human esophagus cancer tissue using [TA350590] (USP15 Antibody) at dilution 1/35 (Original magnification:  $\times 200$ )



Immunohistochemistry of paraffin-embedded Human esophagus cancer tissue using [TA350590] (USP15 Antibody) at dilution 1/35, treated with fusion protein. (Original magnification:  $\times 200$ )