

## Product datasheet for **TA350586**

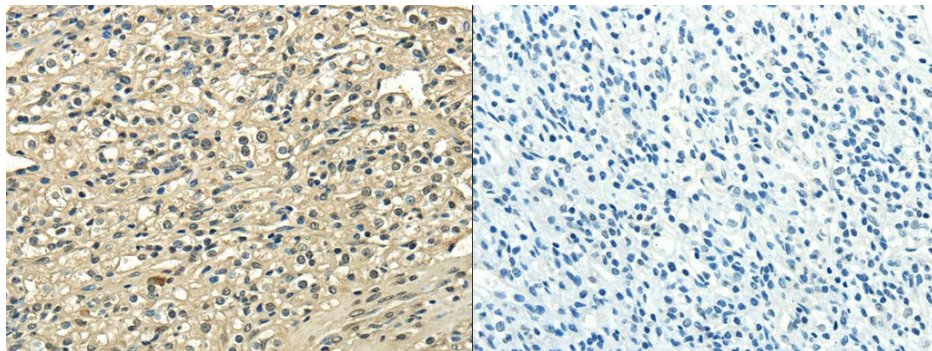
### USP1 Rabbit Polyclonal Antibody

#### Product data:

|                       |  |
|-----------------------|--|
| Product Type:         | Primary Antibodies   |
| Applications:         | IHC  |
| Recommended Dilution: | ELISA: 2000-5000, IHC: 20-100  |
| Reactivity:           | Human, Mouse, Rat  |
| Host:                 | Rabbit   |
| Isotype:              | IgG  |
| Clonality:            | Polyclonal   |
| Immunogen:            | Fusion protein of human USP1   |
| Formulation:          | pH7.4 PBS, 0.05% NaN <sub>3</sub> , 40% Glycerol   |
| Concentration:        | lot specific   |
| Purification:         | Antigen affinity purification  |
| Conjugation:          | Unconjugated   |
| Storage:              | Store at -20°C as received.  |
| Stability:            | Stable for 12 months from date of receipt.   |
| Gene Name:            | ubiquitin specific peptidase 1   |
| Database Link:        | <a href="#">NP_003359</a><br><a href="#">Entrez Gene 230484 Mouse</a> <a href="#">Entrez Gene 313387 Rat</a> <a href="#">Entrez Gene 7398 Human</a><br><a href="#">O94782</a>  |
| Background:           | This gene encodes a member of the ubiquitin-specific processing (UBP) family of proteases that is a deubiquitinating enzyme (DUB) with His and Cys domains. This protein is located in the cytoplasm and cleaves the ubiquitin moiety from ubiquitin-fused precursors and ubiquitinated proteins. The protein specifically deubiquitinates a protein in the Fanconi anemia (FA) DNA repair pathway. Alternate transcriptional splice variants have been characterized. |
| Synonyms:             | UBP  |
| Protein Families:     | Protease   |



[View online »](#)

**Product images:**

The image on the left is immunohistochemistry of paraffin-embedded Human prostate cancer tissue using (USP1 Antibody) at dilution 1/25, on the right is treated with fusion protein. (Original magnification:  $\times 200$ )