

## Product datasheet for **TA350584S**

### UQCRC2 Rabbit Polyclonal Antibody

#### Product data:

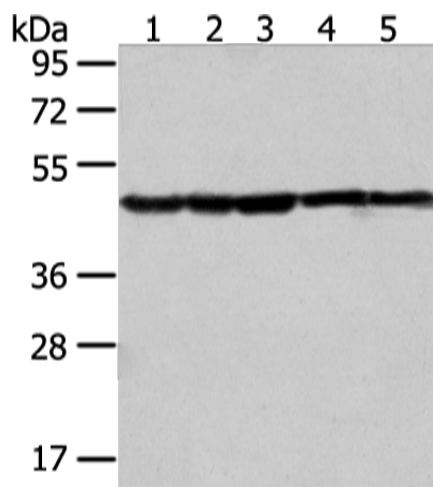
Product Type:	Primary Antibodies
Applications:	IHC, WB
Recommended Dilution:	WB: 1000-5000 WB positive control: Jurkat, Raji, hepg2, A431 and HT-29 cell IHC: 25-100 Positive control: Human prostate cancer Predicted cell location: Cytoplasm
Reactivity:	Human, Mouse, Rat
Host:	Rabbit
Isotype:	IgG
Clonality:	Polyclonal
Immunogen:	Fusion protein of human UQCRC2
Formulation:	pH7.4 PBS, 0.05% NaN <sub>3</sub> , 40% Glycerol
Purification:	Antigen affinity purification
Conjugation:	Unconjugated
Storage:	Store at -20°C as received.
Stability:	Stable for 12 months from date of receipt.
Predicted Protein Size:	48 kDa
Gene Name:	ubiquinol-cytochrome c reductase core protein II
Database Link:	<a href="#">NP_003357</a> <a href="#">Entrez Gene 67003 Mouse</a> <a href="#">Entrez Gene 293448 Rat</a> <a href="#">Entrez Gene 7385 Human</a> <a href="#">P22695</a>
Background:	This is a component of the ubiquinol-cytochrome c reductase complex (complex III or cytochrome b-c1 complex), which is part of the mitochondrial respiratory chain. The core protein 2 is required for the assembly of the complex.
Synonyms:	MC3DN5; QCR2; UQCR2
Protein Families:	Druggable Genome, Protease



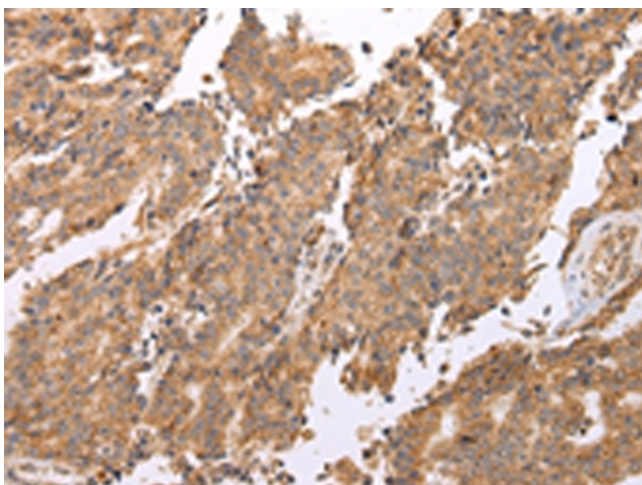
[View online »](#)

**Protein Pathways:** Alzheimer's disease, Cardiac muscle contraction, Huntington's disease, Metabolic pathways, Oxidative phosphorylation, Parkinson's disease

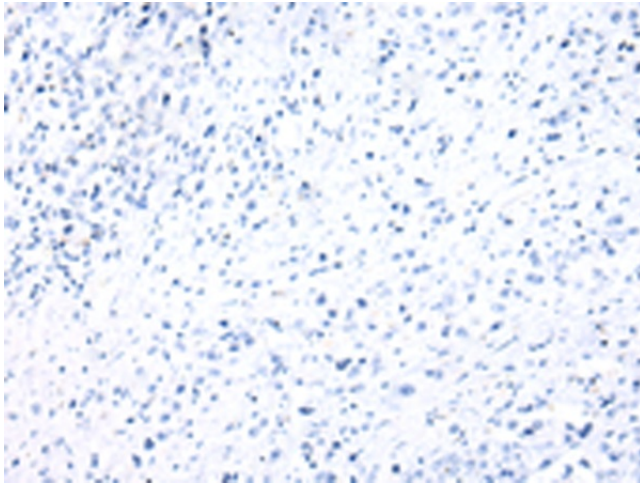
**Product images:**



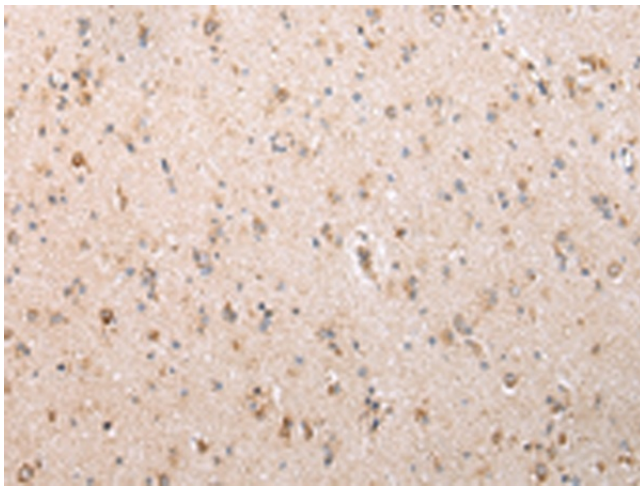
Gel: 8%SDS-PAGE  
Lysate: 40 µg  
Lane 1-5: Jurkat  
Raji  
hepg2  
A431 and HT-29 cell  
Primary antibody: [TA350584] (UQCRC2 Antibody)  
at dilution 1/400  
Secondary antibody: Goat anti rabbit IgG at  
1/8000 dilution  
Exposure time: 10 seconds



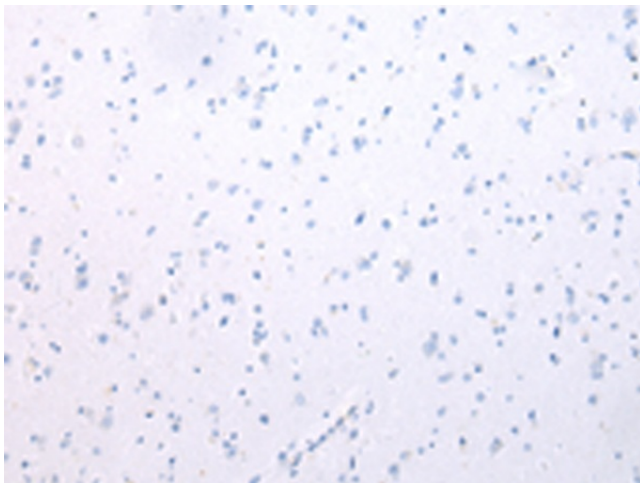
Immunohistochemistry of paraffin-embedded  
Human prostate cancer tissue using [TA350584]  
(UQCRC2 Antibody) at dilution 1/25 (Original  
magnification: ×200)



Immunohistochemistry of paraffin-embedded Human prostate cancer tissue using [TA350584] (UQCRC2 Antibody) at dilution 1/25, treated with fusion protein. (Original magnification:  $\times 200$ )



Immunohistochemistry of paraffin-embedded Human brain tissue using [TA350584] (UQCRC2 Antibody) at dilution 1/25 (Original magnification:  $\times 200$ )



Immunohistochemistry of paraffin-embedded Human brain tissue using [TA350584] (UQCRC2 Antibody) at dilution 1/25, treated with fusion protein. (Original magnification:  $\times 200$ )