

Product datasheet for **TA350584**

UQCRC2 Rabbit Polyclonal Antibody

Product data:

| | |
|-------------------------|---|
| Product Type: | Primary Antibodies |
| Applications: | IHC, WB |
| Recommended Dilution: | WB: 1000-5000 WB positive control: Jurkat, Raji, hepg2, A431 and HT-29 cell IHC: 25-100 Positive control: Human prostate cancer Predicted cell location: Cytoplasm |
| Reactivity: | Human, Mouse, Rat |
| Host: | Rabbit |
| Isotype: | IgG |
| Clonality: | Polyclonal |
| Immunogen: | Fusion protein of human UQCRC2 |
| Formulation: | pH7.4 PBS, 0.05% NaN ₃ , 40% Glycerol |
| Concentration: | lot specific |
| Purification: | Antigen affinity purification |
| Conjugation: | Unconjugated |
| Storage: | Store at -20°C as received. |
| Stability: | Stable for 12 months from date of receipt. |
| Predicted Protein Size: | 48 kDa |
| Gene Name: | ubiquinol-cytochrome c reductase core protein II |
| Database Link: | NP_003357 Entrez Gene 67003 Mouse Entrez Gene 293448 Rat Entrez Gene 7385 Human P22695 |
| Background: | This is a component of the ubiquinol-cytochrome c reductase complex (complex III or cytochrome b-c1 complex), which is part of the mitochondrial respiratory chain. The core protein 2 is required for the assembly of the complex. |
| Synonyms: | MC3DN5; QCR2; UQCR2 |

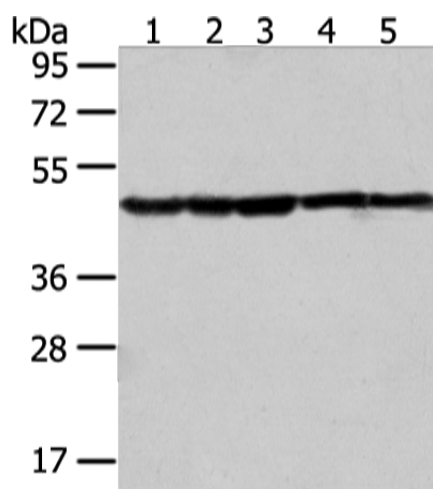


[View online »](#)

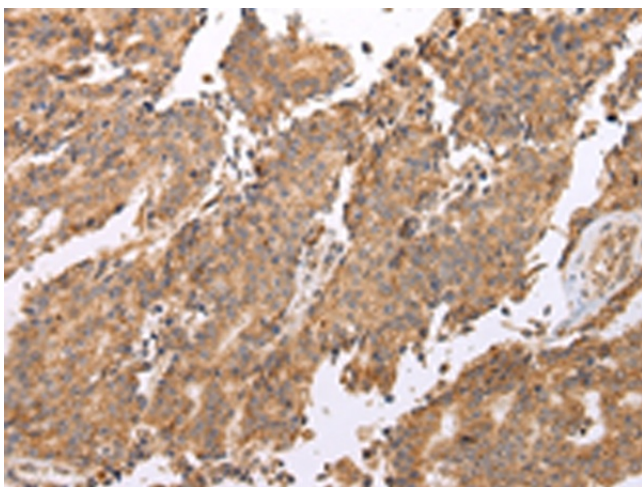
Protein Families: Druggable Genome, Protease

Protein Pathways: Alzheimer's disease, Cardiac muscle contraction, Huntington's disease, Metabolic pathways, Oxidative phosphorylation, Parkinson's disease

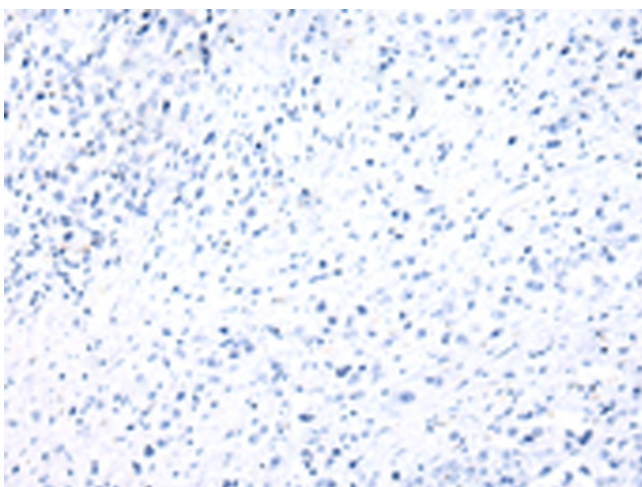
Product images:



Gel: 8%SDS-PAGE
Lysate: 40 μ g
Lane 1-5: Jurkat
Raji
hepg2
A431 and HT-29 cell
Primary antibody: TA350584 (UQCRC2 Antibody)
at dilution 1/400
Secondary antibody: Goat anti rabbit IgG at
1/8000 dilution
Exposure time: 10 seconds



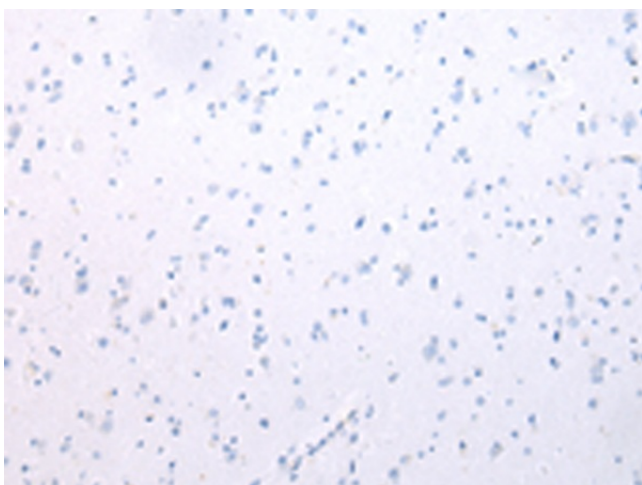
Immunohistochemistry of paraffin-embedded
Human prostate cancer tissue using TA350584
(UQCRC2 Antibody) at dilution 1/25 (Original
magnification: \times 200)



Immunohistochemistry of paraffin-embedded Human prostate cancer tissue using TA350584 (UQCRC2 Antibody) at dilution 1/25, treated with fusion protein. (Original magnification: ×200)



Immunohistochemistry of paraffin-embedded Human brain tissue using TA350584 (UQCRC2 Antibody) at dilution 1/25 (Original magnification: ×200)



Immunohistochemistry of paraffin-embedded Human brain tissue using TA350584 (UQCRC2 Antibody) at dilution 1/25, treated with fusion protein. (Original magnification: ×200)