

Product datasheet for **TA350583**

Ubiquinol Cytochrome C Reductase Core Protein I (UQCRC1) Rabbit Polyclonal Antibody

Product data:

Product Type:	Primary Antibodies
Applications:	IHC, WB
Recommended Dilution:	WB: 500-2000 WB positive control: 293T, hela and A431 cell, human fetal brain tissue and 231 cell, lo2 cell and mouse heart tissue IHC: 25-100 Positive control: Human liver cancer Predicted cell location: Cytoplasm
Reactivity:	Human, Mouse, Rat
Host:	Rabbit
Isotype:	IgG
Clonality:	Polyclonal
Immunogen:	Fusion protein of human UQCRC1
Formulation:	pH7.4 PBS, 0.05% NaN ₃ , 40% Glycerol
Concentration:	lot specific
Purification:	Antigen affinity purification
Conjugation:	Unconjugated
Storage:	Store at -20°C as received.
Stability:	Stable for 12 months from date of receipt.
Predicted Protein Size:	53 kDa
Gene Name:	ubiquinol-cytochrome c reductase core protein I
Database Link:	NP_003356 Entrez Gene 22273 Mouse Entrez Gene 301011 Rat Entrez Gene 7384 Human P31930
Background:	Cytochrome b-c1 complex subunit 1, mitochondrial is a protein that in humans is encoded by the UQCRC1 gene. This is a component of the ubiquinol-cytochrome c reductase complex (complex III or cytochrome b-c1 complex), which is part of the mitochondrial respiratory chain. This protein may mediate formation of the complex between cytochromes c and c1.



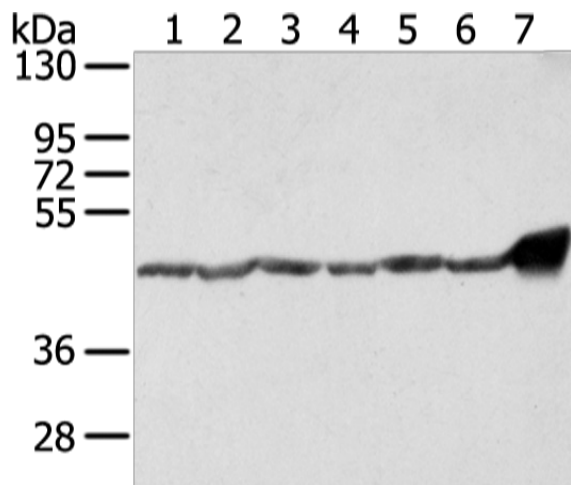
[View online »](#)

Synonyms: D3S3191; QCR1; UQCR1

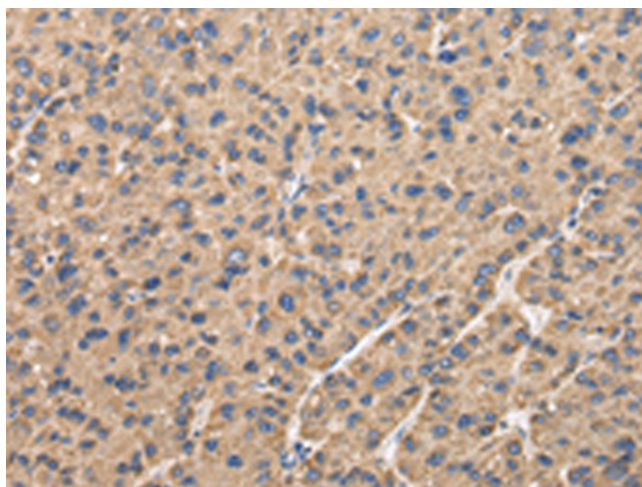
Protein Families: Druggable Genome, Protease

Protein Pathways: Alzheimer's disease, Cardiac muscle contraction, Huntington's disease, Metabolic pathways, Oxidative phosphorylation, Parkinson's disease

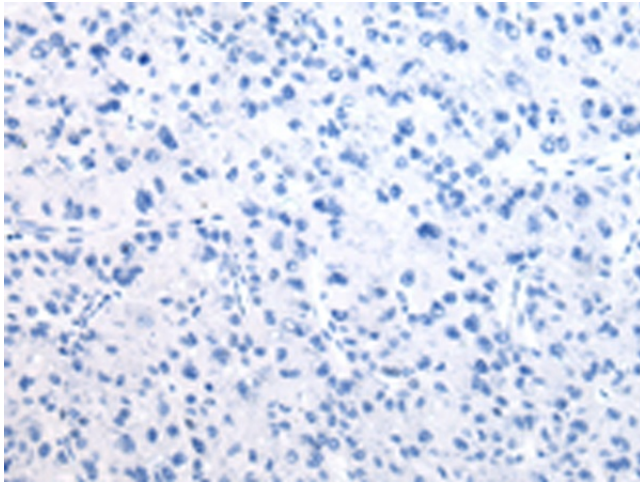
Product images:



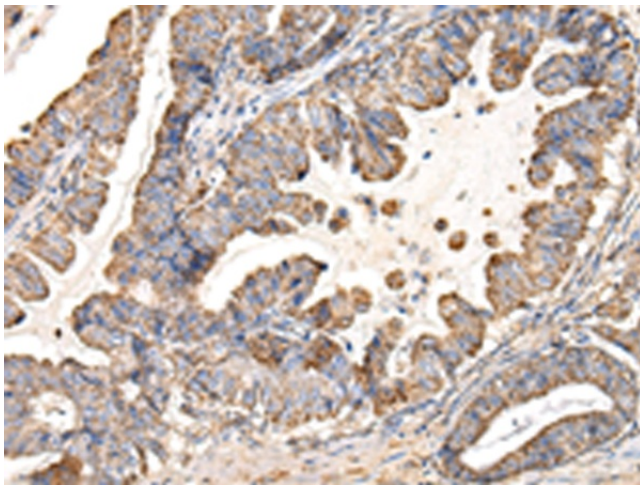
Gel: 8%SDS-PAGE
 Lysate: 40 µg
 Lane 1-7: 293T
 hela and A431 cell
 human fetal brain tissue and 231 cell
 lo2 cell and mouse heart tissue
 Primary antibody: TA350583 (UQCRC1 Antibody)
 at dilution 1/800
 Secondary antibody: Goat anti rabbit IgG at
 1/8000 dilution
 Exposure time: 1 second



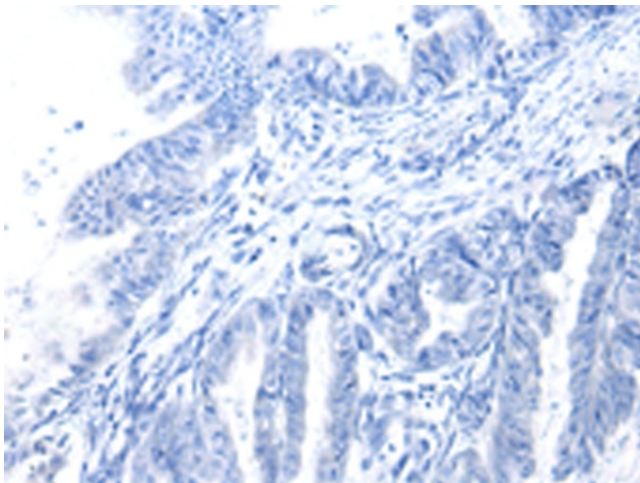
Immunohistochemistry of paraffin-embedded
 Human liver cancer tissue using TA350583
 (UQCRC1 Antibody) at dilution 1/35 (Original
 magnification: ×200)



Immunohistochemistry of paraffin-embedded Human liver cancer tissue using TA350583 (UQCRC1 Antibody) at dilution 1/35, treated with fusion protein. (Original magnification: ×200)



Immunohistochemistry of paraffin-embedded Human esophagus cancer tissue using TA350583 (UQCRC1 Antibody) at dilution 1/35 (Original magnification: ×200)



Immunohistochemistry of paraffin-embedded Human esophagus cancer tissue using TA350583 (UQCRC1 Antibody) at dilution 1/35, treated with fusion protein. (Original magnification: ×200)