

Product datasheet for **TA350577S**

Aldehyde dehydrogenase 10 (ALDH3A2) Rabbit Polyclonal Antibody

Product data:

| | |
|-------------------------|---|
| Product Type: | Primary Antibodies |
| Applications: | IHC, WB |
| Recommended Dilution: | WB: 500-2000 WB positive control: Human normal liver and fetal liver tissue IHC: 25-100 Positive control: Human prostate cancer Predicted cell location: Cytoplasm |
| Reactivity: | Human |
| Host: | Rabbit |
| Isotype: | IgG |
| Clonality: | Polyclonal |
| Immunogen: | Fusion protein of human ALDH3A2 |
| Formulation: | pH7.4 PBS, 0.05% NaN ₃ , 40% Glycerol |
| Purification: | Antigen affinity purification |
| Conjugation: | Unconjugated |
| Storage: | Store at -20°C as received. |
| Stability: | Stable for 12 months from date of receipt. |
| Predicted Protein Size: | 55 kDa |
| Gene Name: | aldehyde dehydrogenase 3 family member A2 |
| Database Link: | NP_001026976 Entrez Gene 224 Human P51648 |
| Background: | Aldehyde dehydrogenase isozymes are thought to play a major role in the detoxification of aldehydes generated by alcohol metabolism and lipid peroxidation. This gene product catalyzes the oxidation of long-chain aliphatic aldehydes to fatty acid. Mutations in the gene cause Sjogren-Larsson syndrome. Alternatively spliced transcript variants encoding different isoforms have been found for this gene. |
| Synonyms: | ALDH10; FALDH; SLS |

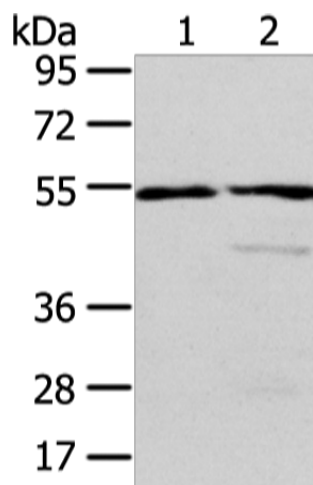


[View online »](#)

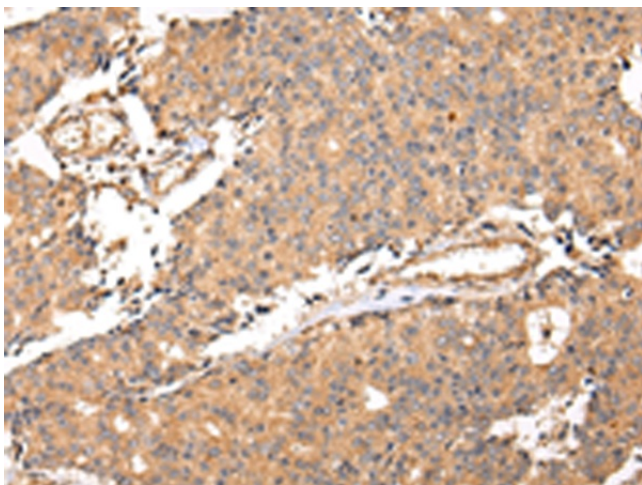
Protein Families: Druggable Genome, Transmembrane

Protein Pathways: Arginine and proline metabolism, Ascorbate and aldarate metabolism, beta-Alanine metabolism, Butanoate metabolism, Fatty acid metabolism, Glycerolipid metabolism, Glycolysis / Gluconeogenesis, Histidine metabolism, Limonene and pinene degradation, Lysine degradation, Metabolic pathways, Propanoate metabolism, Pyruvate metabolism, Tryptophan metabolism, Valine, leucine and isoleucine degradation

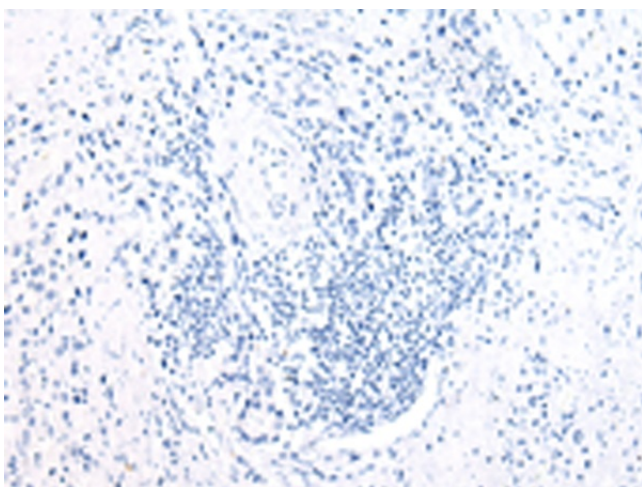
Product images:



Gel: 6%SDS-PAGE
Lysate: 40 μ g
Lane 1-2: Human normal liver and fetal liver tissue
Primary antibody: [TA350577] (ALDH3A2 Antibody) at dilution 1/250
Secondary antibody: Goat anti rabbit IgG at 1/8000 dilution
Exposure time: 10 seconds



Immunohistochemistry of paraffin-embedded Human prostate cancer tissue using [TA350577] (ALDH3A2 Antibody) at dilution 1/20 (Original magnification: \times 200)



Immunohistochemistry of paraffin-embedded Human prostate cancer tissue using [TA350577] (ALDH3A2 Antibody) at dilution 1/20, treated with fusion protein. (Original magnification: ×200)