

## Product datasheet for **TA350576**

### Syntenin (SDCBP) Rabbit Polyclonal Antibody

#### Product data:

Product Type:	Primary Antibodies
Applications:	IHC, WB
Recommended Dilution:	WB: 500-2000 WB positive control: Hela cell IHC: 30-150 Positive control: Human prostate cancer Predicted cell location: Cytoplasm
Reactivity:	Human, Mouse, Rat
Host:	Rabbit
Isotype:	IgG
Clonality:	Polyclonal
Immunogen:	Full length fusion protein
Formulation:	pH7.4 PBS, 0.05% NaN <sub>3</sub> , 40% Glycerol
Concentration:	lot specific
Purification:	Antigen affinity purification
Conjugation:	Unconjugated
Storage:	Store at -20°C as received.
Stability:	Stable for 12 months from date of receipt.
Predicted Protein Size:	32 kDa
Gene Name:	syndecan binding protein
Database Link:	<a href="#">NP_005616</a> <a href="#">Entrez Gene 53378 Mouse</a> <a href="#">Entrez Gene 83841 Rat</a> <a href="#">Entrez Gene 6386 Human</a> <a href="#">O00560</a>



[View online »](#)

**Background:**

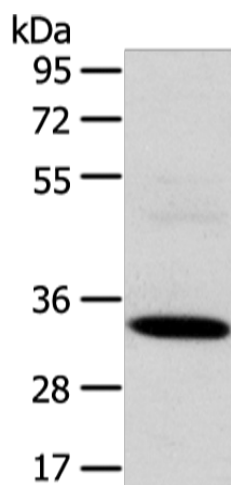
The protein encoded by this gene was initially identified as a molecule linking syndecan-mediated signaling to the cytoskeleton. The syntenin protein contains tandemly repeated PDZ domains that bind the cytoplasmic, C-terminal domains of a variety of transmembrane proteins. This protein may also affect cytoskeletal-membrane organization, cell adhesion, protein trafficking, and the activation of transcription factors. The protein is primarily localized to membrane-associated adherens junctions and focal adhesions but is also found at the endoplasmic reticulum and nucleus.

**Synonyms:**

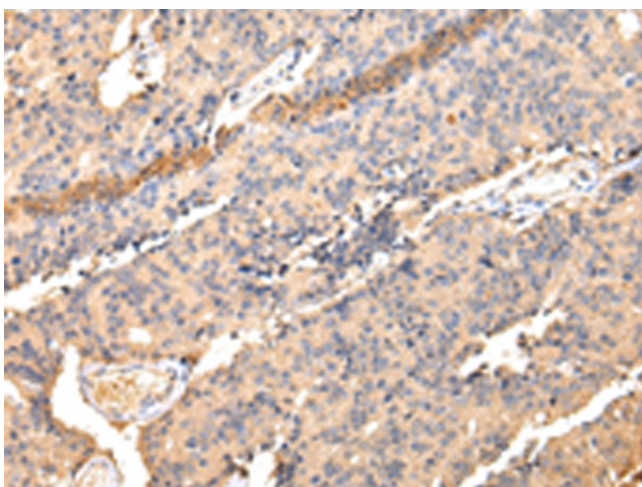
MDA-9; MDA9; ST1; SYCL; TACIP18

**Protein Families:**

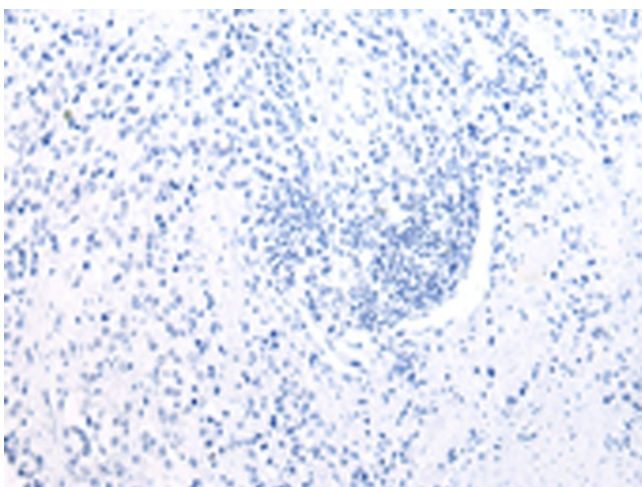
Druggable Genome, Transmembrane

**Product images:**

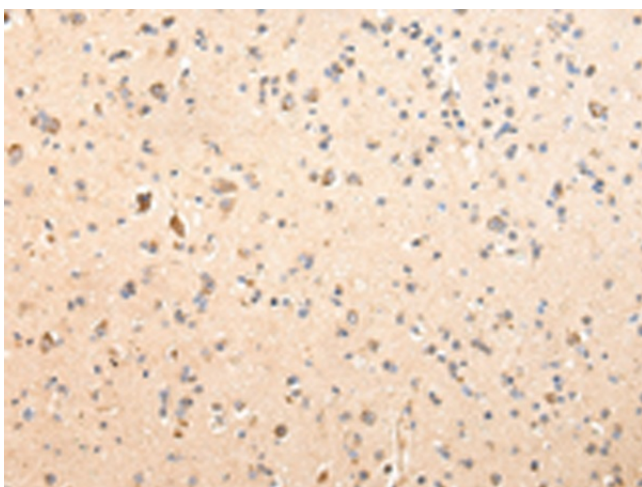
Gel: 8%SDS-PAGE  
Lysate: 40 µg  
Lane: HeLa cell  
Primary antibody: TA350576 (SDCBP Antibody) at dilution 1/500  
Secondary antibody: Goat anti rabbit IgG at 1/8000 dilution  
Exposure time: 3 seconds



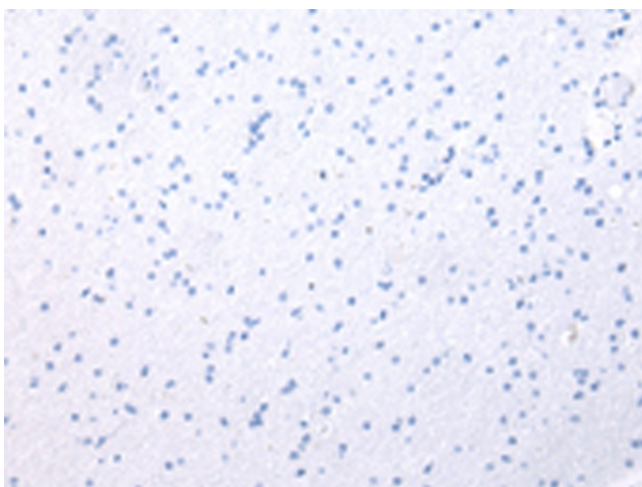
Immunohistochemistry of paraffin-embedded Human prostate cancer tissue using TA350576 (SDCBP Antibody) at dilution 1/40 (Original magnification: ×200)



Immunohistochemistry of paraffin-embedded Human prostate cancer tissue using TA350576 (SDCBP Antibody) at dilution 1/40, treated with fusion protein. (Original magnification:  $\times 200$ )



Immunohistochemistry of paraffin-embedded Human brain tissue using TA350576 (SDCBP Antibody) at dilution 1/40 (Original magnification:  $\times 200$ )



Immunohistochemistry of paraffin-embedded Human brain tissue using TA350576 (SDCBP Antibody) at dilution 1/40, treated with fusion protein. (Original magnification:  $\times 200$ )