

Product datasheet for **TA350574**

MAP2 Rabbit Polyclonal Antibody

Product data:

Product Type:	Primary Antibodies
Applications:	IHC, WB
Recommended Dilution:	WB: 1000-5000 WB positive control: Mouse brain tissue lysate IHC: 100-300 Positive control: Human thyroid cancer Predicted cell location: Cytoplasm
Reactivity:	Human, Mouse, Rat
Host:	Rabbit
Isotype:	IgG
Clonality:	Polyclonal
Immunogen:	Fusion protein of human MAP2
Formulation:	pH7.4 PBS, 0.05% NaN ₃ , 40% Glycerol
Concentration:	lot specific
Purification:	Antigen affinity purification
Conjugation:	Unconjugated
Storage:	Store at -20°C as received.
Stability:	Stable for 12 months from date of receipt.
Gene Name:	microtubule associated protein 2
Database Link:	NP_114033 Entrez Gene 17756 Mouse Entrez Gene 25595 Rat Entrez Gene 4133 Human P11137

Background: This gene encodes a protein that belongs to the microtubule-associated protein family. The proteins of this family are thought to be involved in microtubule assembly, which is an essential step in neurogenesis. The products of similar genes in rat and mouse are neuron-specific cytoskeletal proteins that are enriched in dendrites, implicating a role in determining and stabilizing dendritic shape during neuron development. A number of alternatively spliced variants encoding distinct isoforms have been described.

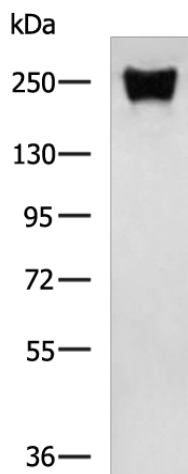


[View online »](#)

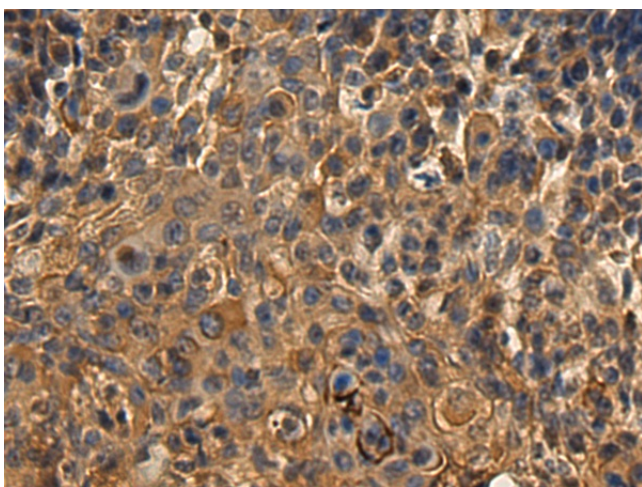
Synonyms: MAP2A; MAP2B; MAP2C

Protein Families: Adult stem cells, Druggable Genome, ES Cell Differentiation/IPS

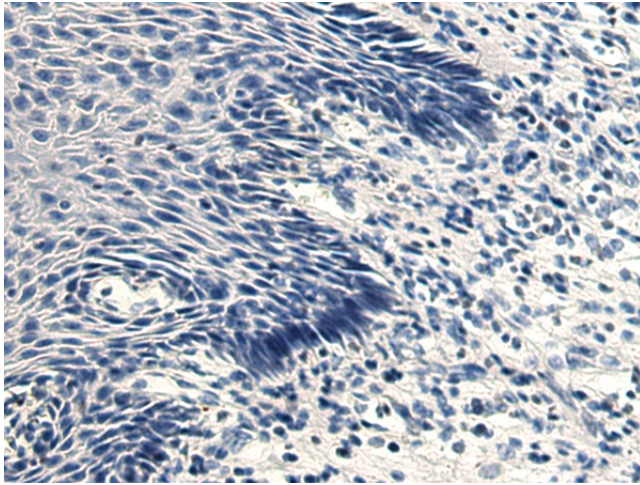
Product images:



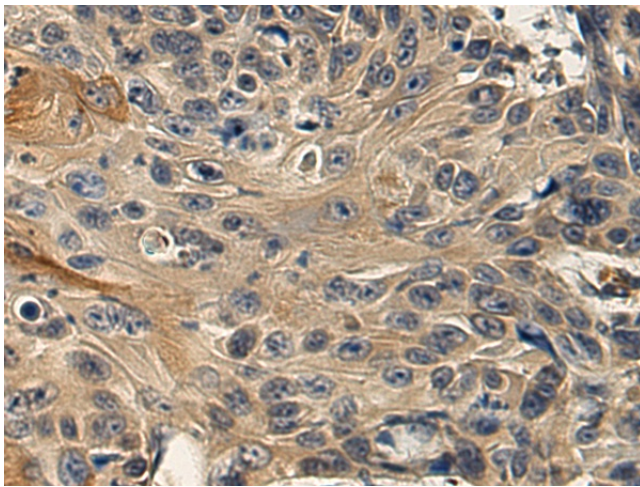
Gel: 6%SDS-PAGE
Lysate: 40 μ g
Lane: Mouse brain tissue lysate
Primary antibody: TA350574 (MAP2 Antibody) at dilution 1/700
Secondary antibody: Goat anti rabbit IgG at 1/5000 dilution
Exposure time: 3 minutes



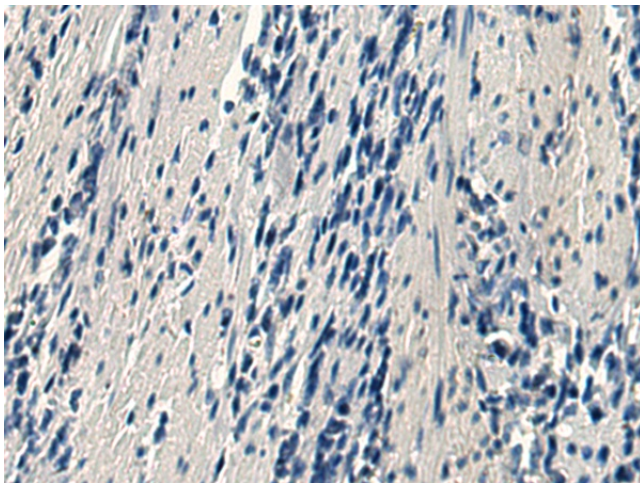
Immunohistochemistry of paraffin-embedded Human thyroid cancer tissue using TA350574 (MAP2 Antibody) at dilution 1/100 (Original magnification: \times 200)



Immunohistochemistry of paraffin-embedded Human thyroid cancer tissue using TA350574 (MAP2 Antibody) at dilution 1/100, treated with fusion protein. (Original magnification: $\times 200$)



Immunohistochemistry of paraffin-embedded Human esophagus cancer tissue using TA350574 (MAP2 Antibody) at dilution 1/100 (Original magnification: $\times 200$)



Immunohistochemistry of paraffin-embedded Human esophagus cancer tissue using TA350574 (MAP2 Antibody) at dilution 1/100, treated with fusion protein. (Original magnification: $\times 200$)