

Product datasheet for **TA350571**

UGP2 Rabbit Polyclonal Antibody

Product data:

Product Type:	Primary Antibodies
Applications:	IHC, WB
Recommended Dilution:	WB: 200-1000 WB positive control: Hela cell IHC: 25-100 Positive control: Human breast cancer Predicted cell location: Cytoplasm
Reactivity:	Human, Mouse
Host:	Rabbit
Isotype:	IgG
Clonality:	Polyclonal
Immunogen:	Fusion protein of human UGP2
Formulation:	pH7.4 PBS, 0.05% NaN ₃ , 40% Glycerol
Concentration:	lot specific
Purification:	Antigen affinity purification
Conjugation:	Unconjugated
Storage:	Store at -20°C as received.
Stability:	Stable for 12 months from date of receipt.
Predicted Protein Size:	57 kDa
Gene Name:	UDP-glucose pyrophosphorylase 2
Database Link:	NP_006750 Entrez Gene 216558 Mouse Entrez Gene 7360 Human Q16851



[View online »](#)

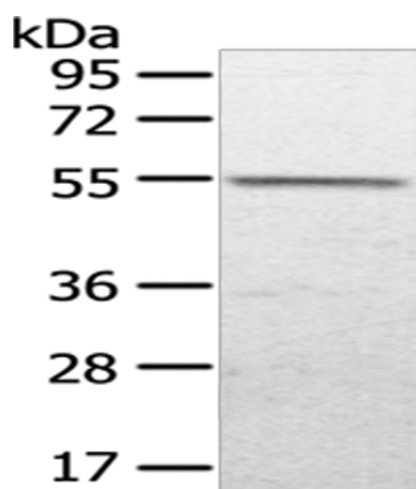
Background: The enzyme encoded by this gene is an important intermediary in mammalian carbohydrate interconversions. It transfers a glucose moiety from glucose-1-phosphate to MgUTP and forms UDP-glucose and MgPPi. In liver and muscle tissue, UDP-glucose is a direct precursor of glycogen; in lactating mammary gland it is converted to UDP-galactose which is then converted to lactose. The eukaryotic enzyme has no significant sequence similarity to the prokaryotic enzyme. Two transcript variants encoding different isoforms have been found for this gene.

Synonyms: pH379; UDPG; UDPGP; UDPGP2; UGP1; UGPP1; UGPP2

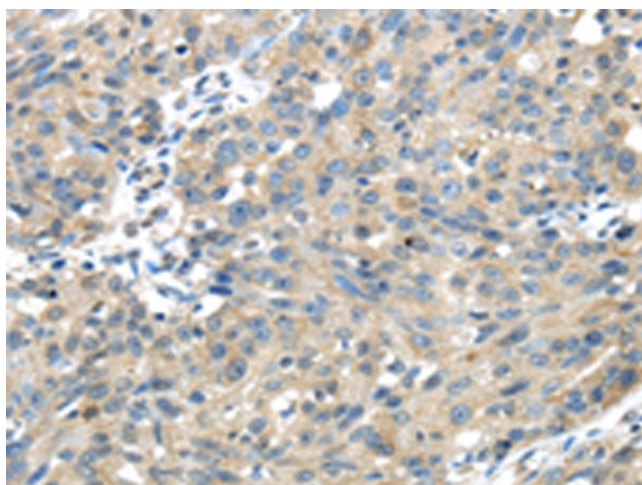
Protein Families: Druggable Genome

Protein Pathways: Amino sugar and nucleotide sugar metabolism, Galactose metabolism, Metabolic pathways, Pentose and glucuronate interconversions, Starch and sucrose metabolism

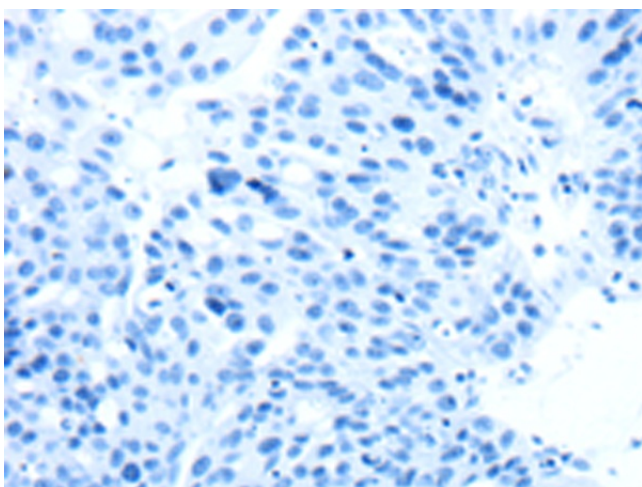
Product images:



Gel: 8%SDS-PAGE
Lysate: 40 µg
Lane: HeLa cell
Primary antibody: TA350571 (UGP2 Antibody) at dilution 1/500
Secondary antibody: Goat anti rabbit IgG at 1/8000 dilution
Exposure time: 1 minute



Immunohistochemistry of paraffin-embedded Human breast cancer tissue using TA350571 (UGP2 Antibody) at dilution 1/35 (Original magnification: ×200)



Immunohistochemistry of paraffin-embedded Human breast cancer tissue using TA350571 (UGP2 Antibody) at dilution 1/35, treated with fusion protein. (Original magnification: ×200)