

Product datasheet for **TA350569S**

UCHL3 Rabbit Polyclonal Antibody

Product data:

Product Type:	Primary Antibodies
Applications:	IHC, WB
Recommended Dilution:	WB: 500-2000 WB positive control: 293T, K562, Jurkat and 231 cell IHC: 25-100 Positive control: Human breast cancer Predicted cell location: Cytoplasm or Nucleus
Reactivity:	Human, Mouse, Rat
Host:	Rabbit
Isotype:	IgG
Clonality:	Polyclonal
Immunogen:	Full length fusion protein
Formulation:	pH7.4 PBS, 0.05% NaN ₃ , 40% Glycerol
Purification:	Antigen affinity purification
Conjugation:	Unconjugated
Storage:	Store at -20°C as received.
Stability:	Stable for 12 months from date of receipt.
Predicted Protein Size:	26 kDa
Gene Name:	ubiquitin C-terminal hydrolase L3
Database Link:	NP_005993 Entrez Gene 50933 MouseEntrez Gene 498560 RatEntrez Gene 7347 Human P15374

Background: The protein encoded by this gene is a member of the deubiquitinating enzyme family. Members of this family are proteases that catalyze the removal of ubiquitin from polypeptides and are divided into five classes, depending on the mechanism of catalysis. This protein may hydrolyze the ubiquitinyl-N-epsilon amide bond of ubiquitinated proteins to regenerate ubiquitin for another catalytic cycle. Alternative splicing results in multiple transcript variants that encode different protein isoforms.

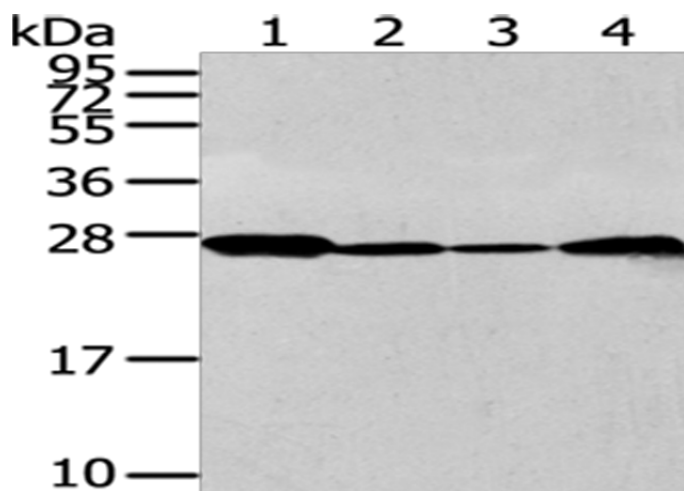


[View online »](#)

Synonyms: UCH-L3

Protein Families: Druggable Genome, Protease

Product images:



Gel: 12%SDS-PAGE

Lysate: 40 μ g

Lane 1-4: 293T

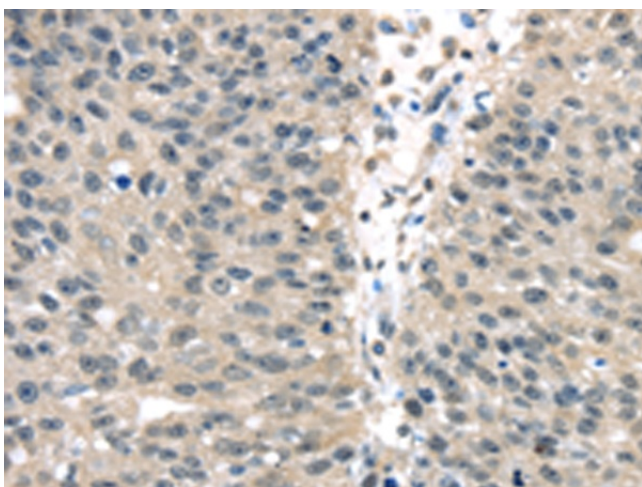
K562

Jurkat and 231 cell

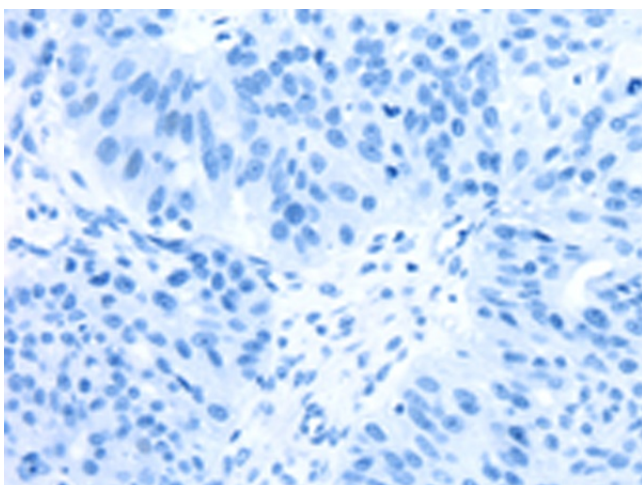
Primary antibody: [TA350569] (UCHL3 Antibody) at dilution 1/300

Secondary antibody: Goat anti rabbit IgG at 1/8000 dilution

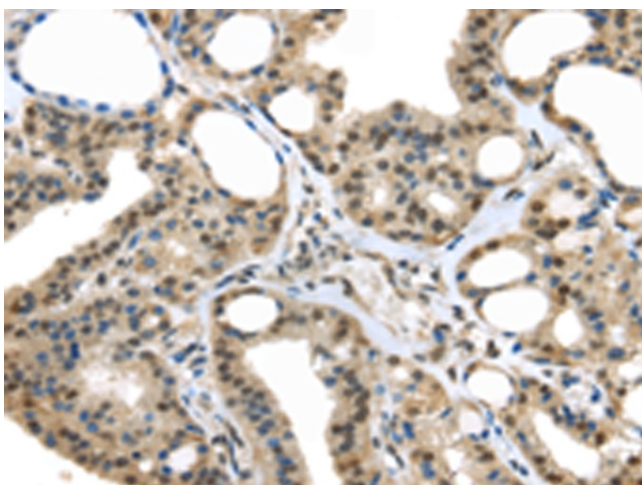
Exposure time: 30 seconds



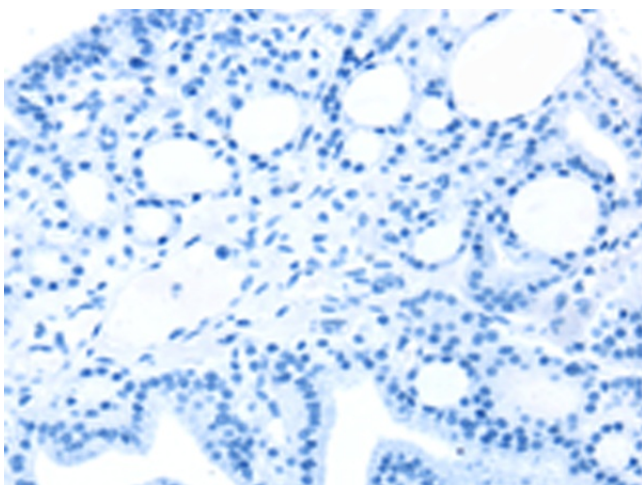
Immunohistochemistry of paraffin-embedded Human breast cancer tissue using [TA350569] (UCHL3 Antibody) at dilution 1/25 (Original magnification: \times 200)



Immunohistochemistry of paraffin-embedded Human breast cancer tissue using [TA350569] (UCHL3 Antibody) at dilution 1/25, treated with fusion protein. (Original magnification: $\times 200$)



Immunohistochemistry of paraffin-embedded Human thyroid cancer tissue using [TA350569] (UCHL3 Antibody) at dilution 1/25 (Original magnification: $\times 200$)



Immunohistochemistry of paraffin-embedded Human thyroid cancer tissue using [TA350569] (UCHL3 Antibody) at dilution 1/25, treated with fusion protein. (Original magnification: $\times 200$)