

## Product datasheet for **TA350569**

### UCHL3 Rabbit Polyclonal Antibody

#### Product data:

|                         |   |
|-------------------------|---|
| Product Type:           | Primary Antibodies  |
| Applications:           | IHC, WB   |
| Recommended Dilution:   | WB: 500-2000<br>WB positive control: 293T, K562, Jurkat and 231 cell<br>IHC: 25-100<br>Positive control: Human breast cancer<br>Predicted cell location: Cytoplasm or Nucleus |
| Reactivity:             | Human, Mouse, Rat   |
| Host:                   | Rabbit  |
| Isotype:                | IgG   |
| Clonality:              | Polyclonal  |
| Immunogen:              | Full length fusion protein  |
| Formulation:            | pH7.4 PBS, 0.05% NaN <sub>3</sub> , 40% Glycerol  |
| Concentration:          | lot specific  |
| Purification:           | Antigen affinity purification   |
| Conjugation:            | Unconjugated  |
| Storage:                | Store at -20°C as received.   |
| Stability:              | Stable for 12 months from date of receipt.  |
| Predicted Protein Size: | 26 kDa  |
| Gene Name:              | ubiquitin C-terminal hydrolase L3   |
| Database Link:          | <a href="#">NP_005993</a><br><a href="#">Entrez Gene 50933 Mouse</a> <a href="#">Entrez Gene 498560 Rat</a> <a href="#">Entrez Gene 7347 Human</a><br><a href="#">P15374</a>  |



[View online »](#)

**Background:**

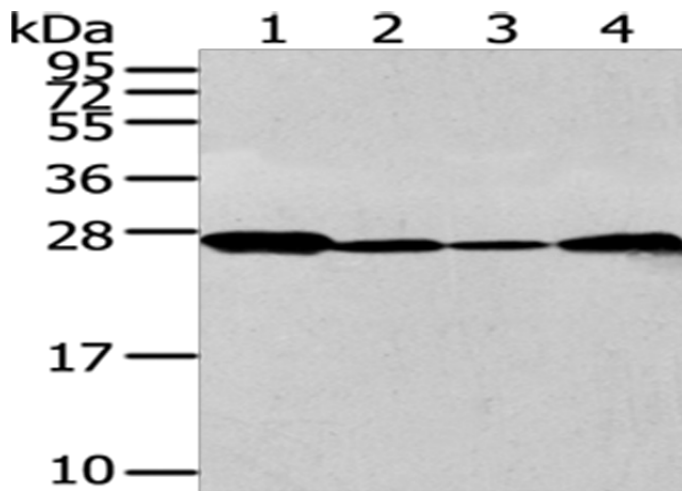
The protein encoded by this gene is a member of the deubiquitinating enzyme family. Members of this family are proteases that catalyze the removal of ubiquitin from polypeptides and are divided into five classes, depending on the mechanism of catalysis. This protein may hydrolyze the ubiquitinyl-N-epsilon amide bond of ubiquitinated proteins to regenerate ubiquitin for another catalytic cycle. Alternative splicing results in multiple transcript variants that encode different protein isoforms.

**Synonyms:**

UCH-L3

**Protein Families:**

Druggable Genome, Protease

**Product images:**


Gel: 12%SDS-PAGE

Lysate: 40 µg

Lane 1-4: 293T

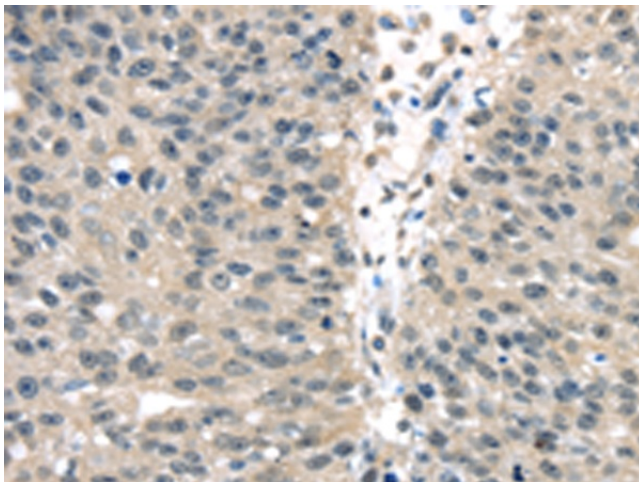
K562

Jurkat and 231 cell

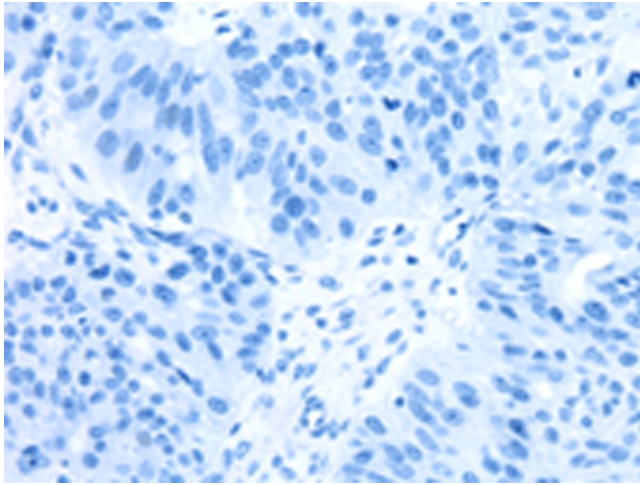
Primary antibody: TA350569 (UCHL3 Antibody) at dilution 1/300

Secondary antibody: Goat anti rabbit IgG at 1/8000 dilution

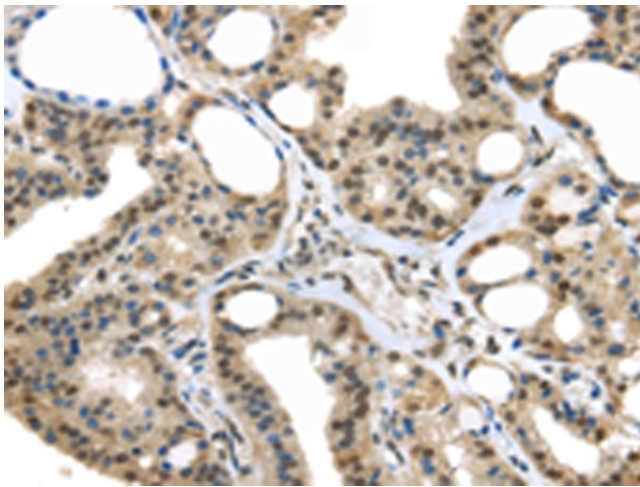
Exposure time: 30 seconds



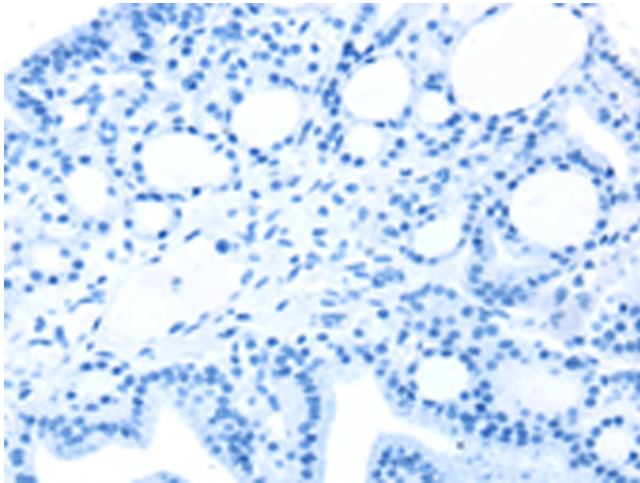
Immunohistochemistry of paraffin-embedded Human breast cancer tissue using TA350569 (UCHL3 Antibody) at dilution 1/25 (Original magnification: ×200)



Immunohistochemistry of paraffin-embedded Human breast cancer tissue using TA350569 (UCHL3 Antibody) at dilution 1/25, treated with fusion protein. (Original magnification: ×200)



Immunohistochemistry of paraffin-embedded Human thyroid cancer tissue using TA350569 (UCHL3 Antibody) at dilution 1/25 (Original magnification: ×200)



Immunohistochemistry of paraffin-embedded Human thyroid cancer tissue using TA350569 (UCHL3 Antibody) at dilution 1/25, treated with fusion protein. (Original magnification: ×200)