

Product datasheet for **TA350568**

UBL3 Rabbit Polyclonal Antibody

Product data:

Product Type:	Primary Antibodies
Applications:	IHC
Recommended Dilution:	IHC: 25-100 Positive control: Human liver cancer Predicted cell location: Cell membrane
Reactivity:	Human, Mouse, Rat
Host:	Rabbit
Isotype:	IgG
Clonality:	Polyclonal
Immunogen:	Full length fusion protein
Formulation:	pH7.4 PBS, 0.05% NaN ₃ , 40% Glycerol
Concentration:	lot specific
Purification:	Antigen affinity purification
Conjugation:	Unconjugated
Storage:	Store at -20°C as received.
Stability:	Stable for 12 months from date of receipt.
Gene Name:	ubiquitin like 3
Database Link:	NP_009037 Entrez Gene 24109 Mouse Entrez Gene 363869 Rat Entrez Gene 5412 Human O95164

Background: Ubiquitin is a 77 amino acid protein that targets proteins for degradation by the 26S proteasome. Ubiquitin-like proteins are not directly involved in protein degradation, but appear to have many mechanistic similarities with the ubiquitin pathway. UBL3 (ubiquitin-like protein 3), also known as membrane-anchored ubiquitin-fold protein (MUB) or PNS1, is a 117 amino acid membrane protein belonging to the ubiquitin-like family. Highly conserved between species, UBL3 contains two potential N-glycosylation sites, a potential protein kinase C phosphorylation site, and a potential C-terminal prenylation site. The gene encoding UBL3 is localized to chromosome 13q12.3.

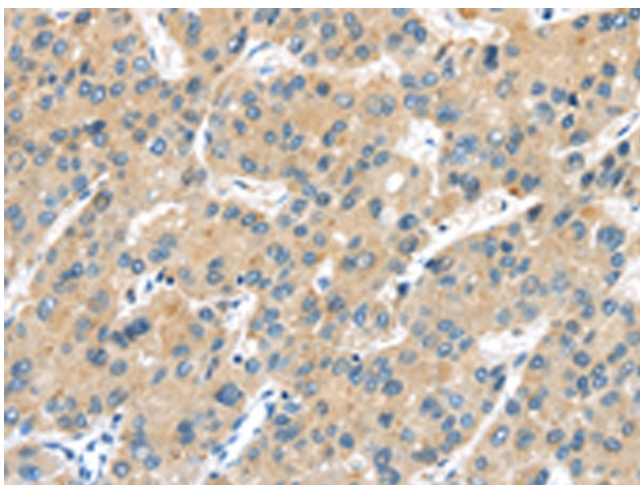


[View online »](#)

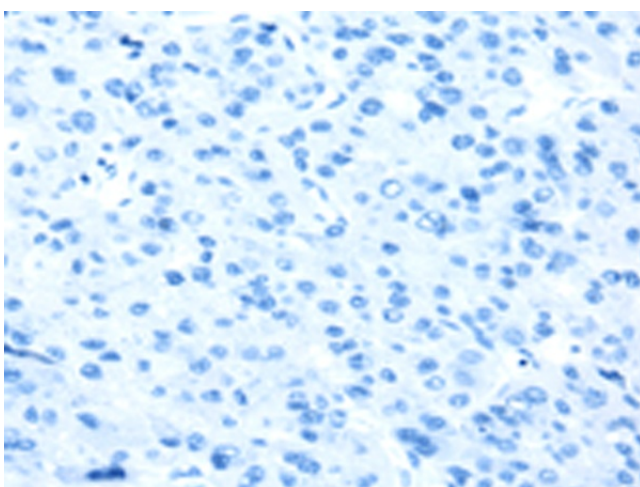
Synonyms: HCG-1; PNSC1

Protein Families: Druggable Genome

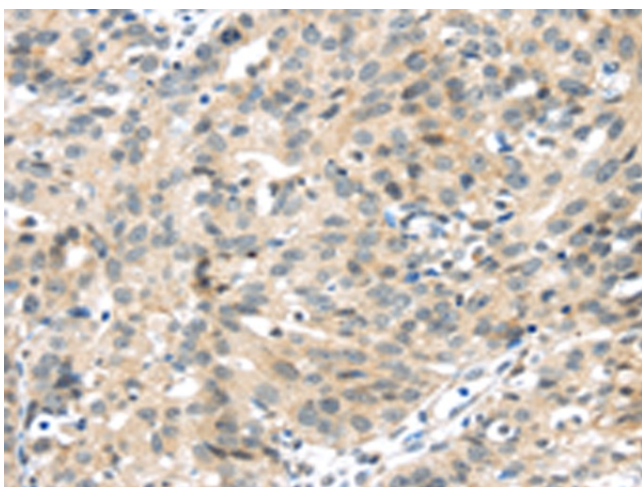
Product images:



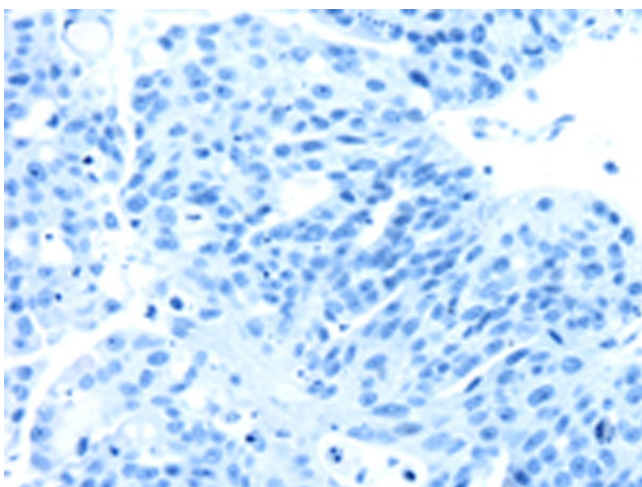
Immunohistochemistry of paraffin-embedded Human liver cancer tissue using TA350568 (UBL3 Antibody) at dilution 1/30 (Original magnification: ×200)



Immunohistochemistry of paraffin-embedded Human liver cancer tissue using TA350568 (UBL3 Antibody) at dilution 1/30, treated with fusion protein. (Original magnification: ×200)



Immunohistochemistry of paraffin-embedded Human breast cancer tissue using TA350568 (UBL3 Antibody) at dilution 1/30 (Original magnification: $\times 200$)



Immunohistochemistry of paraffin-embedded Human breast cancer tissue using TA350568 (UBL3 Antibody) at dilution 1/30, treated with fusion protein. (Original magnification: $\times 200$)