

Product datasheet for **TA350567**

UBL4B Rabbit Polyclonal Antibody

Product data:

Product Type:	Primary Antibodies
Applications:	IHC
Recommended Dilution:	IHC: 25-100 Positive control: Human esophagus cancer Predicted cell location: Cytoplasm
Reactivity:	Human
Host:	Rabbit
Isotype:	IgG
Clonality:	Polyclonal
Immunogen:	Full length fusion protein
Formulation:	pH7.4 PBS, 0.05% NaN ₃ , 40% Glycerol
Concentration:	lot specific
Purification:	Antigen affinity purification
Conjugation:	Unconjugated
Storage:	Store at -20°C as received.
Stability:	Stable for 12 months from date of receipt.
Gene Name:	ubiquitin like 4B
Database Link:	NP_981957 Entrez Gene 164153 Human Q8N7F7



[View online »](#)

Background:

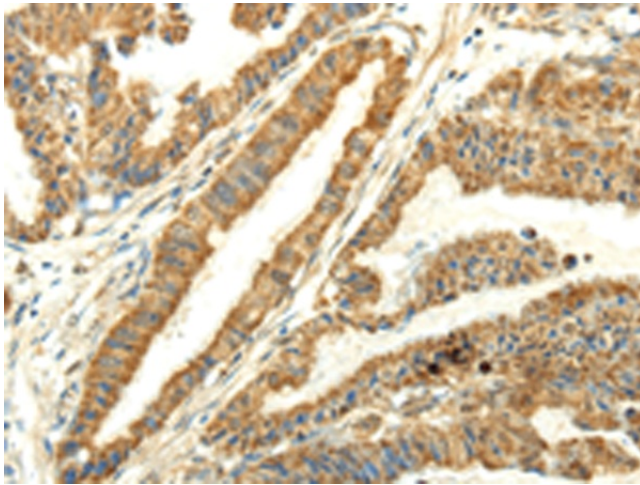
Ubiquitin is a 77 amino acid protein that targets proteins for degradation by the 26S proteasome. Ubiquitin-like proteins are not directly involved in protein degradation, but appear to have many mechanistic similarities with the ubiquitin pathway. UBL4B (Ubiquitin-like protein 4B) is a 174 amino acid cytoplasmic protein that contains a ubiquitin-like domain. UBL4B likely arose by retroposition during mammalian evolution from UBL4A, an X-linked intron-bearing housekeeping gene. While UBL4A is highly conserved, UBL4B has undergone rapid evolution and may have evolved new functions. Expression of UBL4B is restricted to post-meiotic germ cells in testis and ovarian tissue, where it likely functions in post-translational protein modification.

Synonyms:

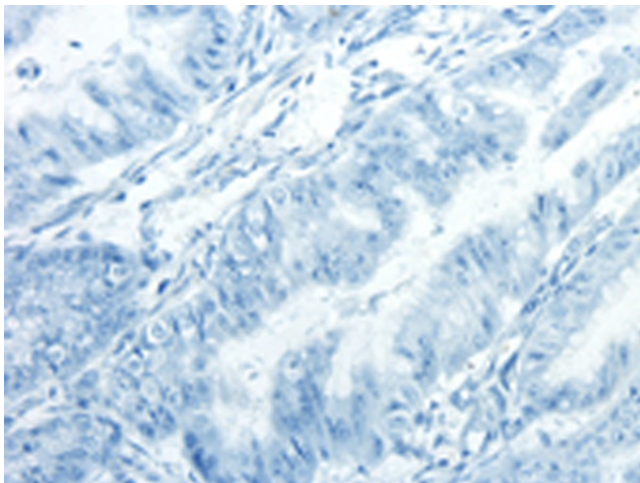
FLJ25690

Protein Families:

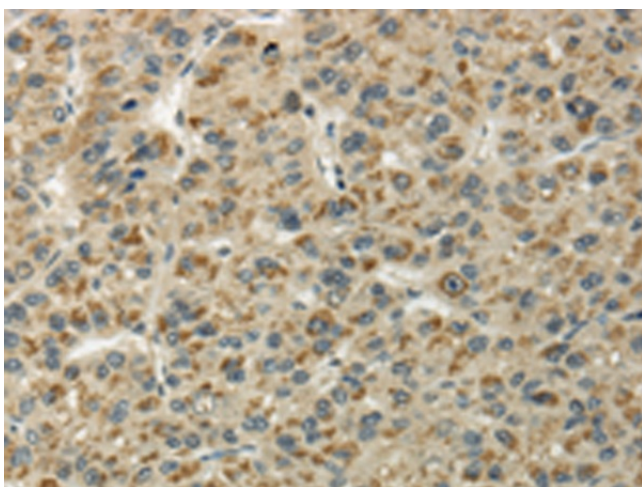
Druggable Genome

Product images:

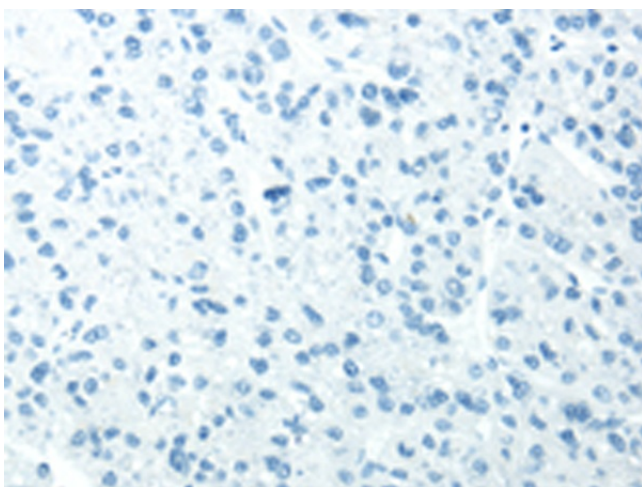
Immunohistochemistry of paraffin-embedded Human esophagus cancer tissue using TA350567 (UBL4B Antibody) at dilution 1/25 (Original magnification: $\times 200$)



Immunohistochemistry of paraffin-embedded Human esophagus cancer tissue using TA350567 (UBL4B Antibody) at dilution 1/25, treated with fusion protein. (Original magnification: $\times 200$)



Immunohistochemistry of paraffin-embedded Human liver cancer tissue using TA350567 (UBL4B Antibody) at dilution 1/25 (Original magnification: $\times 200$)



Immunohistochemistry of paraffin-embedded Human liver cancer tissue using TA350567 (UBL4B Antibody) at dilution 1/25, treated with fusion protein. (Original magnification: $\times 200$)