

Product datasheet for **TA350566**

UBL4A Rabbit Polyclonal Antibody

Product data:

Product Type:	Primary Antibodies
Applications:	IHC, WB
Recommended Dilution:	WB: 1000-5000 WB positive control: Hepg2 and Jurkat cell, human fetal brain tissue and hela cell, A431 and PC3 cell IHC: 30-150 Positive control: Human breast cancer Predicted cell location: Cytoplasm
Reactivity:	Human, Mouse, Rat
Host:	Rabbit
Isotype:	IgG
Clonality:	Polyclonal
Immunogen:	Full length fusion protein
Formulation:	pH7.4 PBS, 0.05% NaN ₃ , 40% Glycerol
Concentration:	lot specific
Purification:	Antigen affinity purification
Conjugation:	Unconjugated
Storage:	Store at -20°C as received.
Stability:	Stable for 12 months from date of receipt.
Predicted Protein Size:	18 kDa
Gene Name:	ubiquitin like 4A
Database Link:	NP_055050 Entrez Gene 27643 Mouse Entrez Gene 293864 Rat Entrez Gene 8266 Human P11441



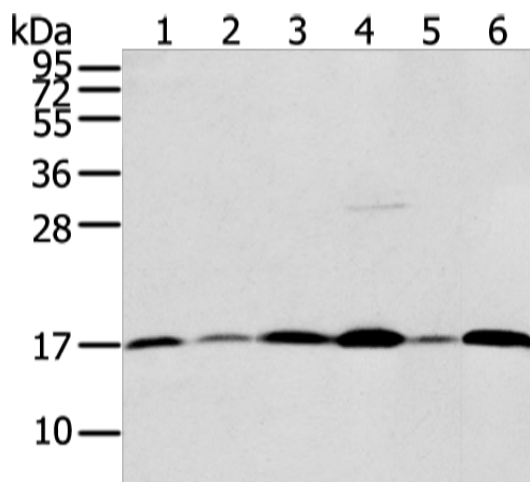
[View online »](#)

Background: UBL4A, also known as GDX, has been characterized as a ubiquitously expressed and highly conserved protein from humans to plants. The N-terminal region of UBL4A shares 43% sequence identity with ubiquitin, however the C-terminal region has no homology to ubiquitin and it is therefore unlikely that UBL4A plays any role in targeting cellular proteins for degradation.

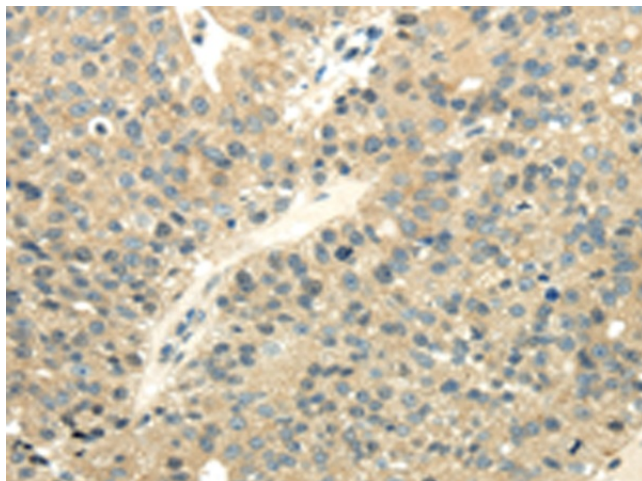
Synonyms: DX254E; DXS254E; G6PD; GDX; GET5; MDY2; TMA24; UBL4

Protein Families: Druggable Genome

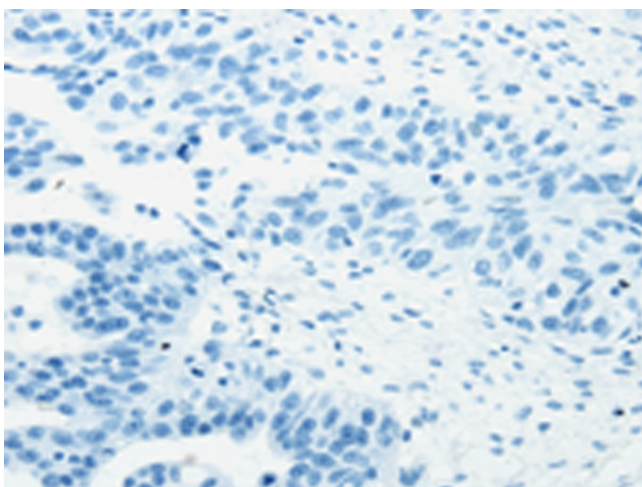
Product images:



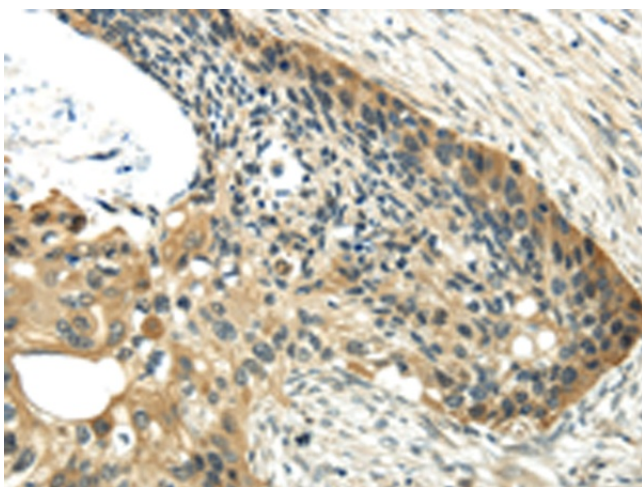
Gel: 12%SDS-PAGE
 Lysate: 40 µg
 Lane 1-6: Hepg2 and Jurkat cell
 human fetal brain tissue and hela cell
 A431 and PC3 cell
 Primary antibody: TA350566 (UBL4A Antibody) at
 dilution 1/800
 Secondary antibody: Goat anti rabbit IgG at
 1/8000 dilution
 Exposure time: 1 minute



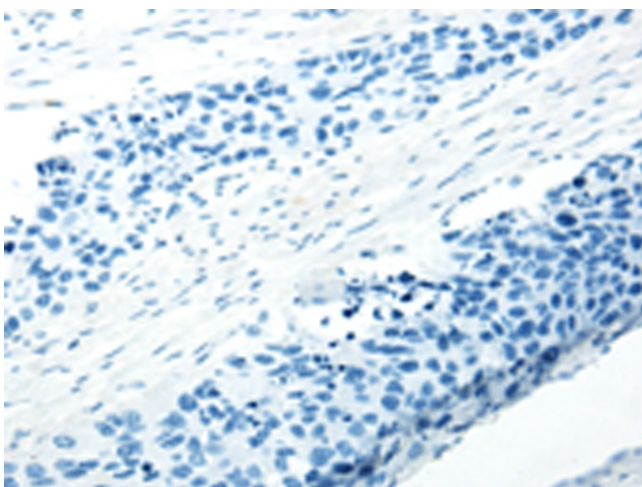
Immunohistochemistry of paraffin-embedded
 Human breast cancer tissue using TA350566
 (UBL4A Antibody) at dilution 1/40 (Original
 magnification: ×200)



Immunohistochemistry of paraffin-embedded Human breast cancer tissue using TA350566 (UBL4A Antibody) at dilution 1/40, treated with fusion protein. (Original magnification: $\times 200$)



Immunohistochemistry of paraffin-embedded Human esophagus cancer tissue using TA350566 (UBL4A Antibody) at dilution 1/40 (Original magnification: $\times 200$)



Immunohistochemistry of paraffin-embedded Human esophagus cancer tissue using TA350566 (UBL4A Antibody) at dilution 1/40, treated with fusion protein. (Original magnification: $\times 200$)