

## Product datasheet for **TA350565**

### UBE2B Rabbit Polyclonal Antibody

#### Product data:

Product Type:	Primary Antibodies
Applications:	IHC
Recommended Dilution:	IHC: 25-100 Positive control: Human thyroid cancer Predicted cell location: Cell membrane and Nucleus
Reactivity:	Human, Mouse, Rat
Host:	Rabbit
Isotype:	IgG
Clonality:	Polyclonal
Immunogen:	Full length fusion protein
Formulation:	pH7.4 PBS, 0.05% NaN <sub>3</sub> , 40% Glycerol
Concentration:	lot specific
Purification:	Antigen affinity purification
Conjugation:	Unconjugated
Storage:	Store at -20°C as received.
Stability:	Stable for 12 months from date of receipt.
Gene Name:	ubiquitin conjugating enzyme E2 B
Database Link:	<a href="#">NP_003328</a> <a href="#">Entrez Gene 22210 Mouse</a> <a href="#">Entrez Gene 81816 Rat</a> <a href="#">Entrez Gene 7320 Human</a> <a href="#">P63146</a>
Background:	The modification of proteins with ubiquitin is an important cellular mechanism for targeting abnormal or short-lived proteins for degradation. Ubiquitination involves at least three classes of enzymes: ubiquitin-activating enzymes, or E1s, ubiquitin-conjugating enzymes, or E2s, and ubiquitin-protein ligases, or E3s. This gene encodes a member of the E2 ubiquitin-conjugating enzyme family. This enzyme is required for post-replicative DNA damage repair. Its protein sequence is 100% identical to the mouse, rat, and rabbit homologs, which indicates that this enzyme is highly conserved in eukaryotic evolution.
Synonyms:	E2-17kDa; HHR6B; HR6B; RAD6B; UBC2

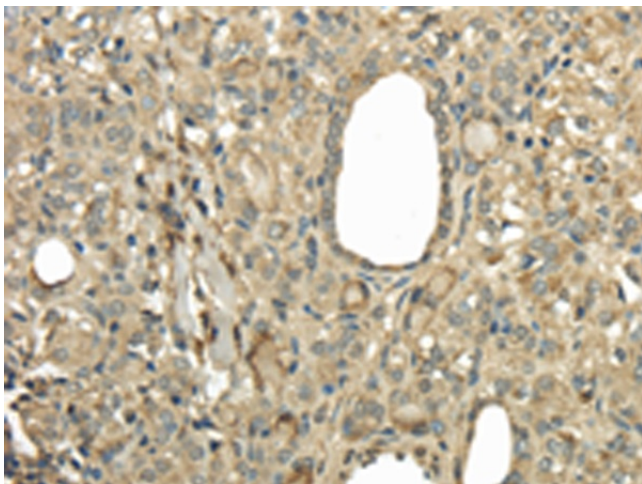


[View online »](#)

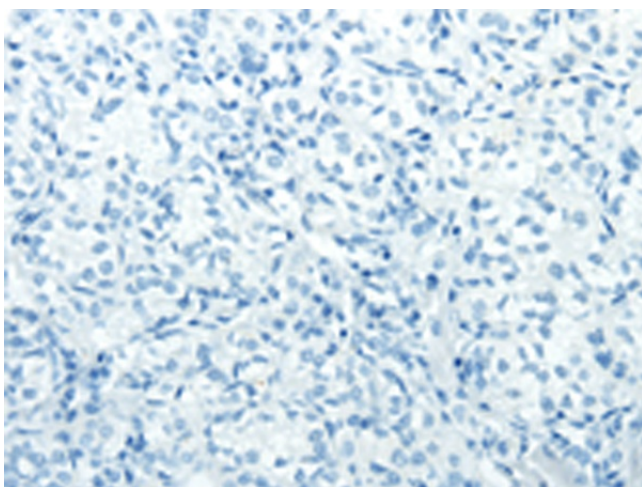
Protein Families: Druggable Genome

Protein Pathways: Ubiquitin mediated proteolysis

**Product images:**



Immunohistochemistry of paraffin-embedded Human thyroid cancer tissue using TA350565 (UBE2B Antibody) at dilution 1/30 (Original magnification:  $\times 200$ )



Immunohistochemistry of paraffin-embedded Human thyroid cancer tissue using TA350565 (UBE2B Antibody) at dilution 1/30, treated with fusion protein. (Original magnification:  $\times 200$ )