

Product datasheet for **TA350558S**

TXNDC5 Rabbit Polyclonal Antibody

Product data:

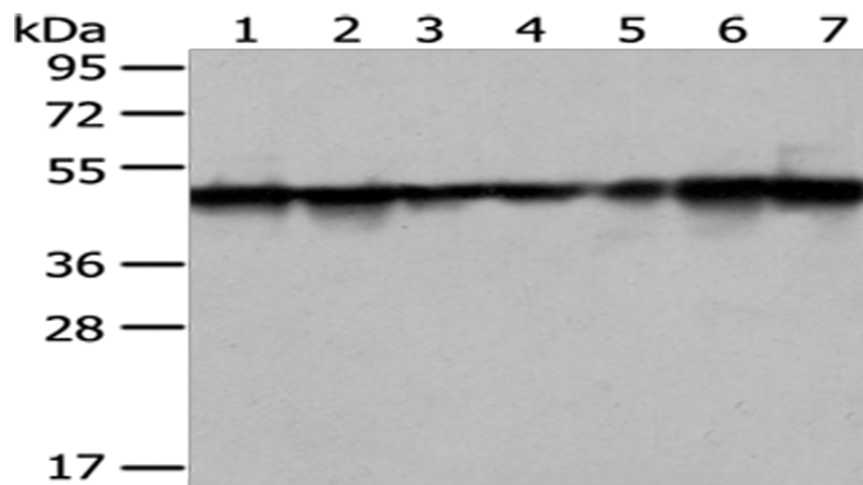
Product Type:	Primary Antibodies
Applications:	IHC, WB
Recommended Dilution:	WB: 1000-5000 WB positive control: 293T, hela and hepg2 cell, human placenta and fetal muscle tissue, PC3 and HT-29 cell IHC: 30-150 Positive control: Human breast cancer Predicted cell location: Cytoplasm
Reactivity:	Human, Mouse
Host:	Rabbit
Isotype:	IgG
Clonality:	Polyclonal
Immunogen:	Full length fusion protein
Formulation:	pH7.4 PBS, 0.05% NaN ₃ , 40% Glycerol
Purification:	Antigen affinity purification
Conjugation:	Unconjugated
Storage:	Store at -20°C as received.
Stability:	Stable for 12 months from date of receipt.
Predicted Protein Size:	48 kDa
Gene Name:	thioredoxin domain containing 5
Database Link:	NP_110437 Entrez Gene 105245 Mouse Entrez Gene 81567 Human Q8NBS9
Background:	This locus represents naturally occurring read-through transcription between the neighboring MUTED (muted homolog) and TXNDC5 (thioredoxin domain containing 5) genes on chromosome 6. The read-through transcript is a candidate for nonsense-mediated mRNA decay (NMD) and is unlikely to produce a protein product.
Synonyms:	ENDOPDI; ERP46; HCC-2; PDIA15; STRF8; UNQ364



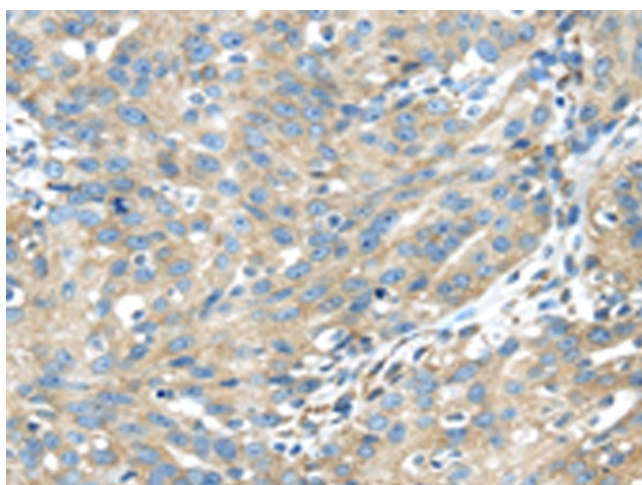
[View online »](#)

Protein Families: Druggable Genome

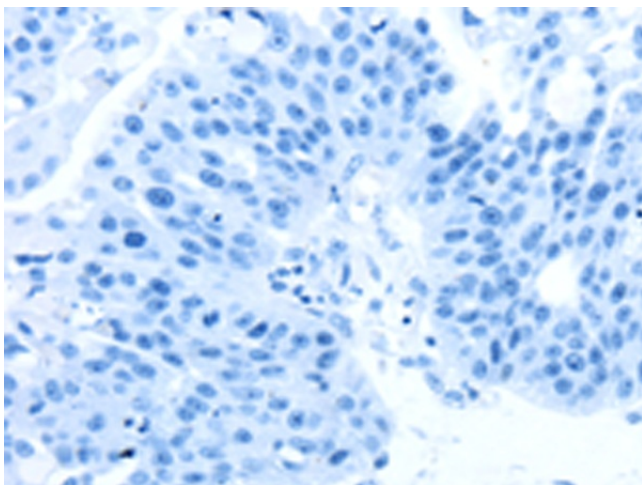
Product images:



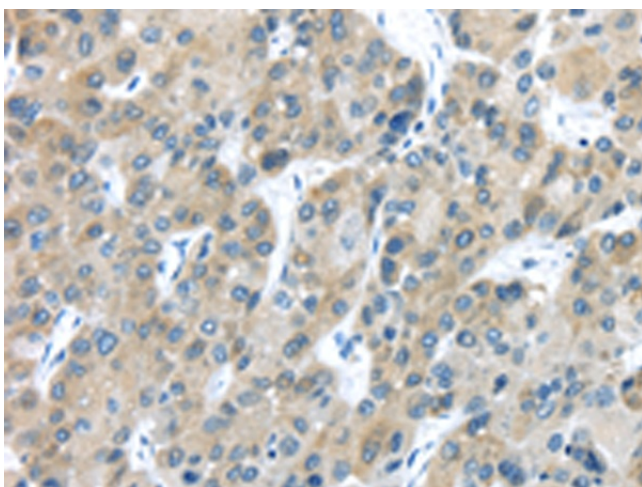
Gel: 8%SDS-PAGE
Lysate: 40 μ g
Lane 1-7: 293T
hela and hepg2 cell
human placenta and fetal muscle tissue
PC3 and HT-29 cell
Primary antibody: [TA350558] (TXNDC5 Antibody)
at dilution 1/500
Secondary antibody: Goat anti rabbit IgG at
1/8000 dilution
Exposure time: 7 seconds



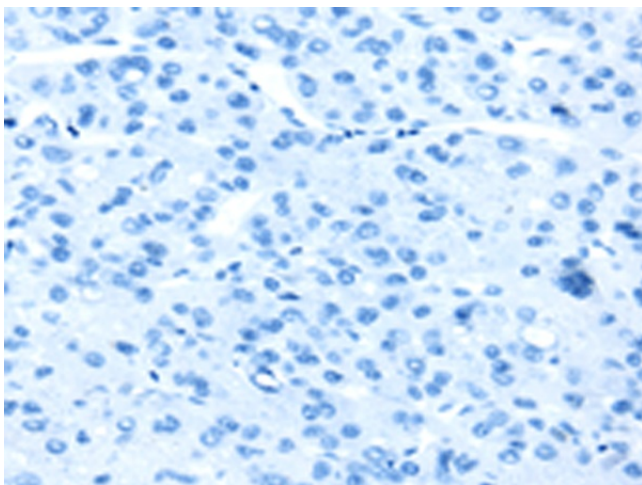
Immunohistochemistry of paraffin-embedded
Human breast cancer tissue using [TA350558]
(TXNDC5 Antibody) at dilution 1/40 (Original
magnification: \times 200)



Immunohistochemistry of paraffin-embedded Human breast cancer tissue using [TA350558] (TXNDC5 Antibody) at dilution 1/40, treated with fusion protein. (Original magnification: ×200)



Immunohistochemistry of paraffin-embedded Human liver cancer tissue using [TA350558] (TXNDC5 Antibody) at dilution 1/40 (Original magnification: ×200)



Immunohistochemistry of paraffin-embedded Human liver cancer tissue using [TA350558] (TXNDC5 Antibody) at dilution 1/40, treated with fusion protein. (Original magnification: ×200)