

## Product datasheet for **TA350554S**

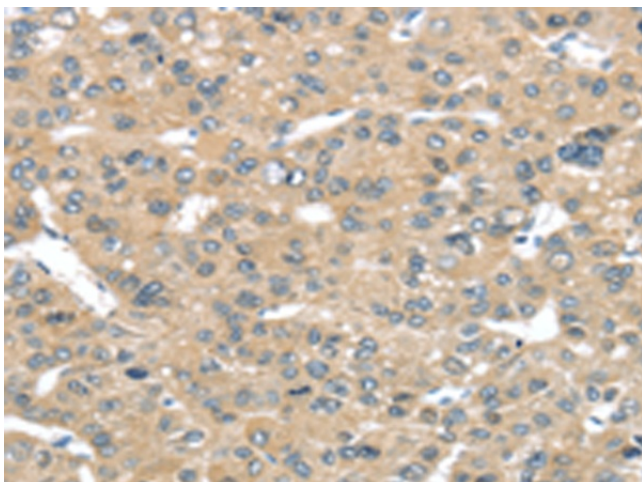
### TUSC2 Rabbit Polyclonal Antibody

#### Product data:

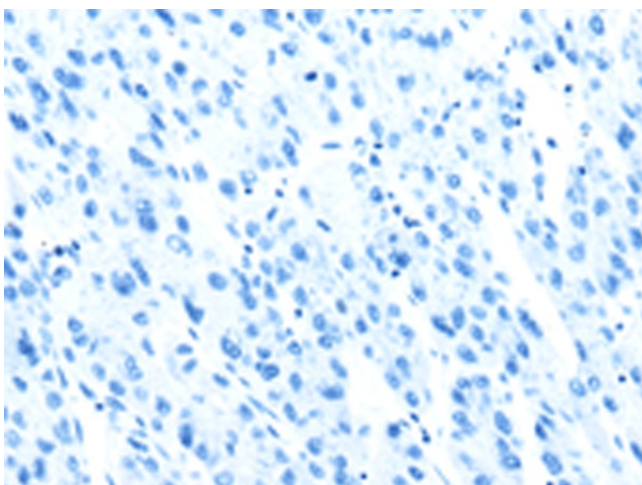
Product Type:	Primary Antibodies
Applications:	IHC
Recommended Dilution:	IHC: 30-150 Positive control: Human liver cancer Predicted cell location: Cytoplasm
Reactivity:	Human, Mouse
Host:	Rabbit
Isotype:	IgG
Clonality:	Polyclonal
Immunogen:	Full length fusion protein
Formulation:	pH7.4 PBS, 0.05% NaN <sub>3</sub> , 40% Glycerol
Purification:	Antigen affinity purification
Conjugation:	Unconjugated
Storage:	Store at -20°C as received.
Stability:	Stable for 12 months from date of receipt.
Gene Name:	tumor suppressor candidate 2
Database Link:	<a href="#">NP_009206</a> <a href="#">Entrez Gene 80385 Mouse</a> <a href="#">Entrez Gene 11334 Human</a> <a href="#">O75896</a>
Background:	This gene is a highly conserved lung cancer candidate gene. No other information about this gene is currently available.
Synonyms:	C3orf11; FUS1; PAP; PDAP2
Protein Families:	Druggable Genome



[View online »](#)

**Product images:**

Immunohistochemistry of paraffin-embedded Human liver cancer tissue using [TA350554] (TUSC2 Antibody) at dilution 1/50 (Original magnification:  $\times 200$ )



Immunohistochemistry of paraffin-embedded Human liver cancer tissue using [TA350554] (TUSC2 Antibody) at dilution 1/50, treated with fusion protein. (Original magnification:  $\times 200$ )