

## Product datasheet for **TA350552**

### **TUBA6 (TUBA1C) Rabbit Polyclonal Antibody**

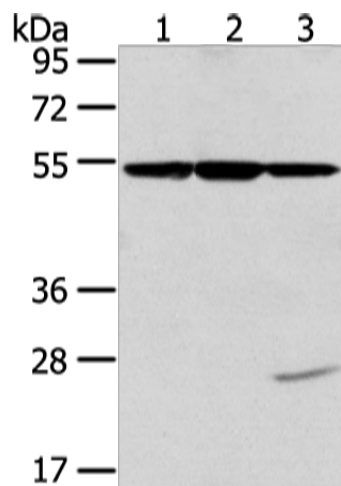
#### **Product data:**

Product Type:	Primary Antibodies
Applications:	IHC, WB
Recommended Dilution:	WB: 500-2000 WB positive control: Hela, K562 and NIH/3T3 cell IHC: 25-100 Positive control: Human prostate cancer Predicted cell location: Cytoplasm and Cell membrane
Reactivity:	Human, Mouse, Rat
Host:	Rabbit
Isotype:	IgG
Clonality:	Polyclonal
Immunogen:	Fusion protein of human TUBA1C
Formulation:	pH7.4 PBS, 0.05% NaN <sub>3</sub> , 40% Glycerol
Concentration:	lot specific
Purification:	Antigen affinity purification
Conjugation:	Unconjugated
Storage:	Store at -20°C as received.
Stability:	Stable for 12 months from date of receipt.
Predicted Protein Size:	50 kDa
Gene Name:	tubulin alpha 1c
Database Link:	<a href="#">NP_116093</a> <a href="#">Entrez Gene 22146 Mouse</a> <a href="#">Entrez Gene 300218 Rat</a> <a href="#">Entrez Gene 84790 Human</a> <a href="#">Q9BQE3</a>
Background:	Tubulin is the major constituent of microtubules. It binds two moles of GTP, one at an exchangeable site on the beta chain and one at a non-exchangeable site on the alpha chain.
Synonyms:	bcm948; TUBA6
Protein Pathways:	Gap junction, Pathogenic Escherichia coli infection

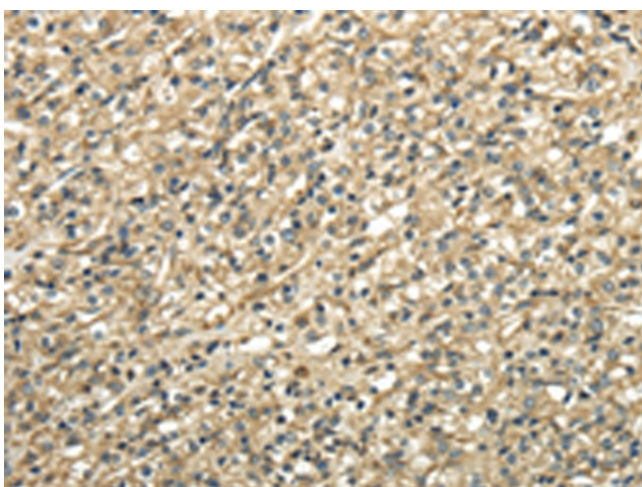


[View online »](#)

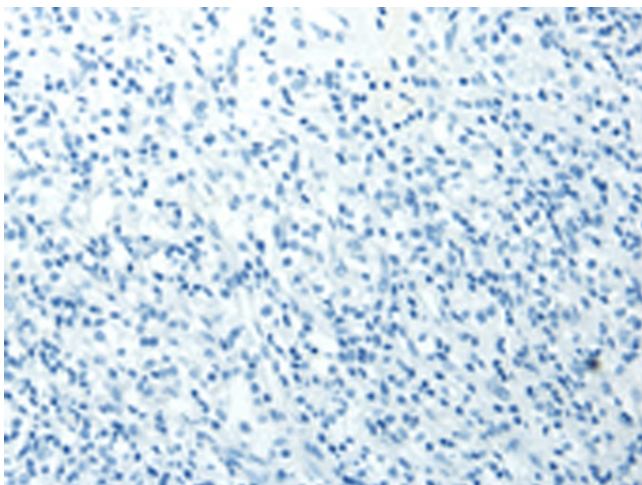
## Product images:



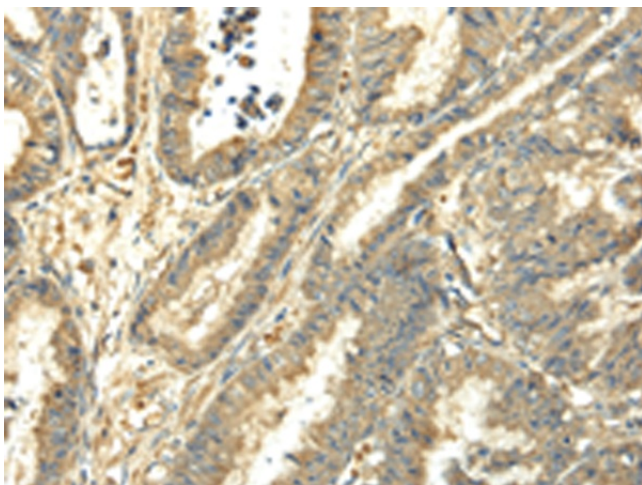
Gel: 8%SDS-PAGE  
Lysate: 40  $\mu$ g  
Lane 1-3: HeLa  
K562 and NIH/3T3 cell  
Primary antibody: TA350552 (TUBA1C Antibody)  
at dilution 1/400  
Secondary antibody: Goat anti rabbit IgG at  
1/8000 dilution  
Exposure time: 10 seconds



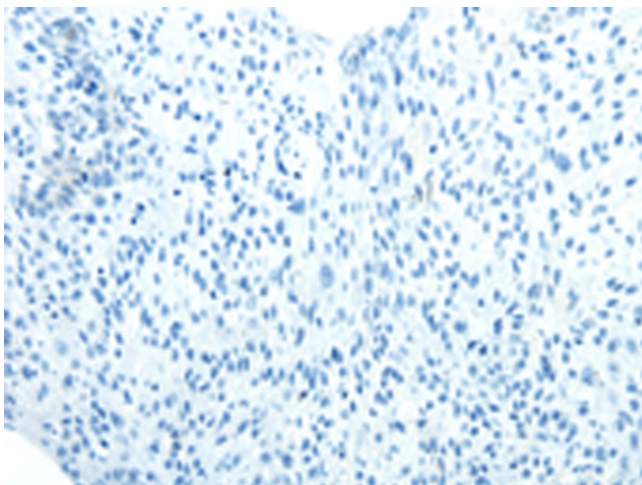
Immunohistochemistry of paraffin-embedded  
Human prostate cancer tissue using TA350552  
(TUBA1C Antibody) at dilution 1/25 (Original  
magnification:  $\times 200$ )



Immunohistochemistry of paraffin-embedded Human prostate cancer tissue using TA350552 (TUBA1C Antibody) at dilution 1/25, treated with fusion protein. (Original magnification: ×200)



Immunohistochemistry of paraffin-embedded Human esophagus cancer tissue using TA350552 (TUBA1C Antibody) at dilution 1/25 (Original magnification: ×200)



Immunohistochemistry of paraffin-embedded Human esophagus cancer tissue using TA350552 (TUBA1C Antibody) at dilution 1/25, treated with fusion protein. (Original magnification: ×200)