

## Product datasheet for **TA350550S**

### TTC23 Rabbit Polyclonal Antibody

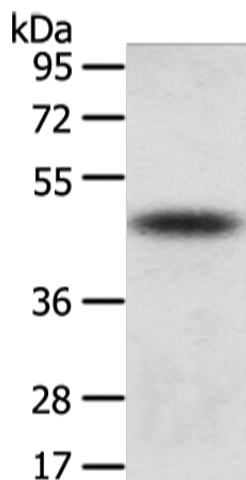
#### Product data:

Product Type:	Primary Antibodies
Applications:	IHC, WB
Recommended Dilution:	WB: 500-2000 WB positive control: Mouse adrenal gland tissue IHC: 25-100 Positive control: Human liver cancer Predicted cell location: Cytoplasm
Reactivity:	Human, Mouse
Host:	Rabbit
Isotype:	IgG
Clonality:	Polyclonal
Immunogen:	Fusion protein of human TTC23
Formulation:	pH7.4 PBS, 0.05% NaN <sub>3</sub> , 40% Glycerol
Purification:	Antigen affinity purification
Conjugation:	Unconjugated
Storage:	Store at -20°C as received.
Stability:	Stable for 12 months from date of receipt.
Predicted Protein Size:	50 kDa
Gene Name:	tetratricopeptide repeat domain 23
Database Link:	<a href="#">NP_075056</a> <a href="#">Entrez Gene 64927 Human Q5W5X9</a>
Background:	The tetratricopeptide repeat (TPR) is a structural motif. It consists in a degenerate 34 amino acid sequence motif identified in a wide variety of proteins. It is found in tandem arrays of 3? 16 motifs,[1] which form scaffolds to mediate protein?protein interactions and often the assembly of multiprotein complexes. These repeats usually fold together to produce a single, linearsolenoid domain called TPR domain.
Synonyms:	HCC-8

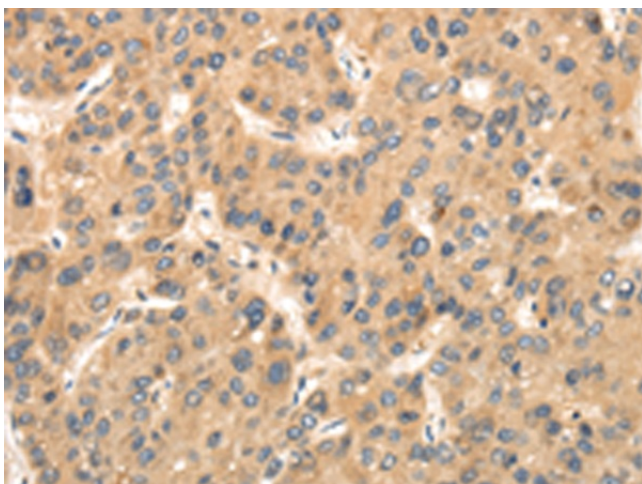


[View online »](#)

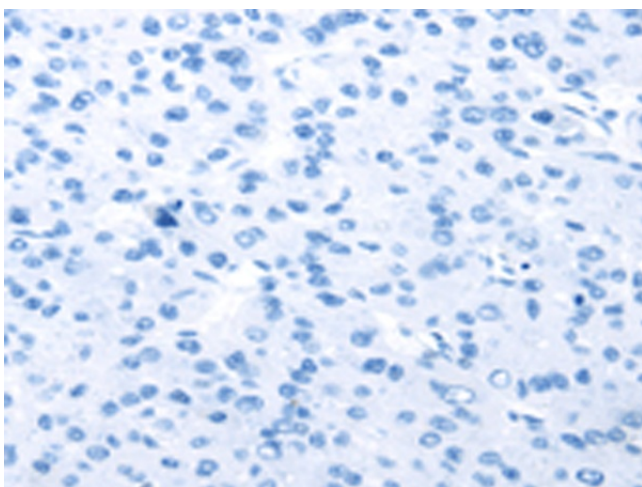
## Product images:



Gel: 8%SDS-PAGE  
Lysate: 40  $\mu$ g  
Lane: Mouse adrenal gland tissue  
Primary antibody: [TA350550] (TTC23 Antibody) at dilution 1/800  
Secondary antibody: Goat anti rabbit IgG at 1/8000 dilution  
Exposure time: 10 seconds



Immunohistochemistry of paraffin-embedded Human liver cancer tissue using [TA350550] (TTC23 Antibody) at dilution 1/35 (Original magnification:  $\times$ 200)



Immunohistochemistry of paraffin-embedded Human liver cancer tissue using [TA350550] (TTC23 Antibody) at dilution 1/35, treated with fusion protein. (Original magnification:  $\times 200$ )