

## Product datasheet for **TA350546**

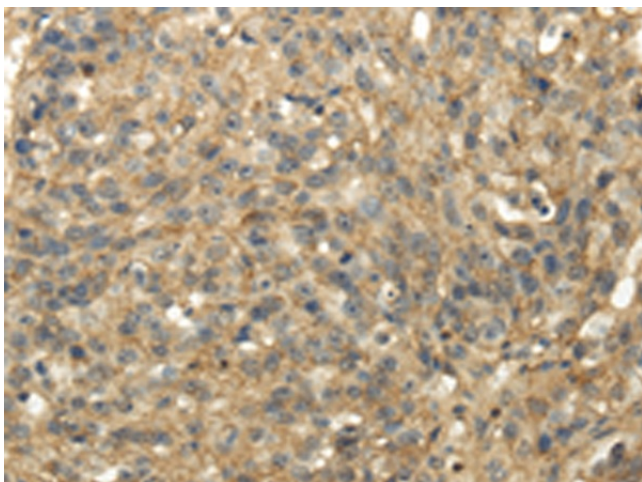
### TACD2 (TACSTD2) Rabbit Polyclonal Antibody

#### Product data:

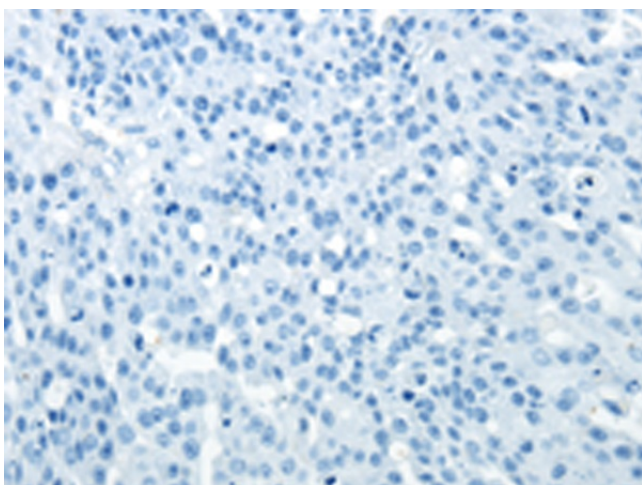
Product Type:	Primary Antibodies
Applications:	IHC
Recommended Dilution:	IHC: 25-100 Positive control: Human breast cancer Predicted cell location: Cell membrane and Cytoplasm
Reactivity:	Human, Mouse, Rat
Host:	Rabbit
Isotype:	IgG
Clonality:	Polyclonal
Immunogen:	Fusion protein of human TACSTD2
Formulation:	pH7.4 PBS, 0.05% NaN3, 40% GlycerolIn
Concentration:	lot specific
Purification:	Antigen affinity purification
Conjugation:	Unconjugated
Storage:	Store at -20°C as received.
Stability:	Stable for 12 months from date of receipt.
Gene Name:	tumor-associated calcium signal transducer 2
Database Link:	<a href="#">NP_002344</a> <a href="#">Entrez Gene 56753 MouseEntrez Gene 494343 RatEntrez Gene 4070 Human P09758</a>
Background:	This intronless gene encodes a carcinoma-associated antigen. This antigen is a cell surface receptor that transduces calcium signals. Mutations of this gene have been associated with gelatinous drop-like corneal dystrophy.
Synonyms:	EGP-1; EGP1; GA733-1; GA7331; GP50; M1S1; TROP2
Protein Families:	Druggable Genome, Transmembrane



[View online »](#)

**Product images:**

Immunohistochemistry of paraffin-embedded Human breast cancer tissue using TA350546 (TACSTD2 Antibody) at dilution 1/35 (Original magnification:  $\times 200$ )



Immunohistochemistry of paraffin-embedded Human breast cancer tissue using TA350546 (TACSTD2 Antibody) at dilution 1/35, treated with fusion protein. (Original magnification:  $\times 200$ )