

Product datasheet for **TA350543**

Inosine triphosphate pyrophosphatase (ITPA) Rabbit Polyclonal Antibody

Product data:

Product Type:	Primary Antibodies
Applications:	IHC, WB
Recommended Dilution:	WB: 200-1000 WB positive control: Human fetal liver tissue and Hela cells IHC: 10-50 Positive control: Human brain Predicted cell location: Cytoplasm
Reactivity:	Human, Mouse, Rat
Host:	Rabbit
Isotype:	IgG
Clonality:	Polyclonal
Immunogen:	Full length fusion protein
Formulation:	pH7.4 PBS, 0.05% NaN ₃ , 40% Glycerol
Concentration:	lot specific
Purification:	Antigen affinity purification
Conjugation:	Unconjugated
Storage:	Store at -20°C as received.
Stability:	Stable for 12 months from date of receipt.
Predicted Protein Size:	21 kDa
Gene Name:	inosine triphosphatase
Database Link:	NP_852470 Entrez Gene 16434 Mouse Entrez Gene 311422 Rat Entrez Gene 3704 Human Q9BY32



[View online »](#)

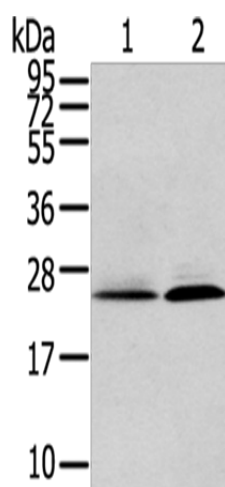
Background: This gene encodes an inosine triphosphate pyrophosphohydrolase. The encoded protein hydrolyzes inosine triphosphate and deoxyinosine triphosphate to the monophosphate nucleotide and diphosphate. This protein, which is a member of the HAM1 NTPase protein family, is found in the cytoplasm and acts as a homodimer. Defects in the encoded protein can result in inosine triphosphate pyrophosphorylase deficiency which causes an accumulation of ITP in red blood cells. Alternate splicing results in multiple transcript variants.

Synonyms: C20orf37; dj79416.3; HLC14-06-P; My049

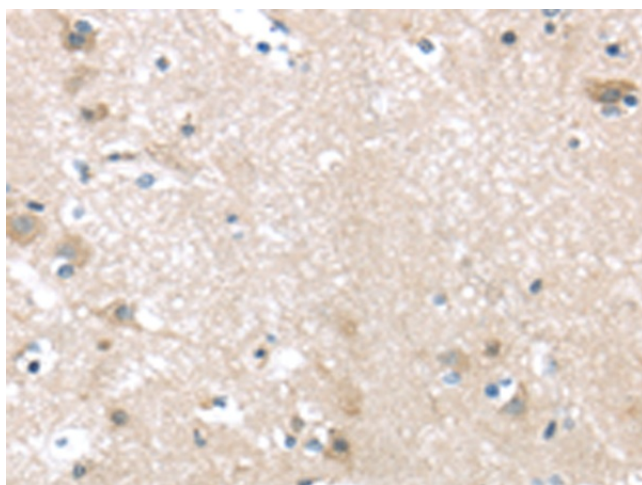
Protein Families: Druggable Genome

Protein Pathways: Drug metabolism - other enzymes, Metabolic pathways, Purine metabolism, Pyrimidine metabolism

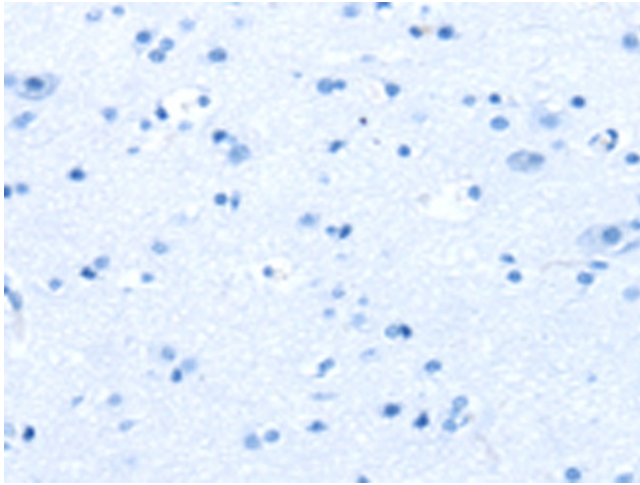
Product images:



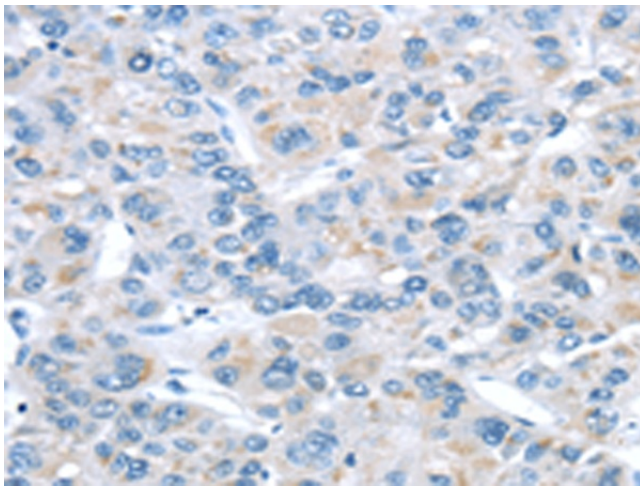
Gel: 12%SDS-PAGE
Lysate: 40 µg
Lane 1-2: Human fetal liver tissue
HeLa cells
Primary antibody: TA350543 (ITPA Antibody) at dilution 1/200
Secondary antibody: Goat anti rabbit IgG at 1/8000 dilution
Exposure time: 2 minutes



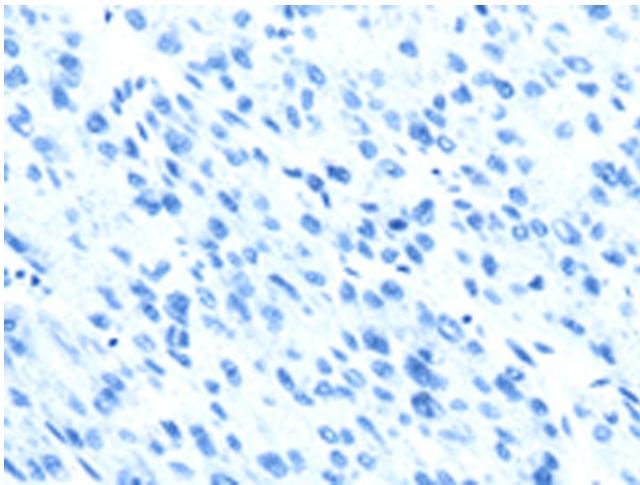
Immunohistochemistry of paraffin-embedded Human brain tissue using TA350543 (ITPA Antibody) at dilution 1/30 (Original magnification: ×200)



Immunohistochemistry of paraffin-embedded Human brain tissue using TA350543 (ITPA Antibody) at dilution 1/30, treated with fusion protein. (Original magnification: ×200)



Immunohistochemistry of paraffin-embedded Human liver cancer tissue using TA350543 (ITPA Antibody) at dilution 1/30 (Original magnification: ×200)



Immunohistochemistry of paraffin-embedded Human liver cancer tissue using TA350543 (ITPA Antibody) at dilution 1/30, treated with fusion protein. (Original magnification: ×200)