

Product datasheet for **TA350539**

TRIB2 Rabbit Polyclonal Antibody

Product data:

Product Type:	Primary Antibodies
Applications:	IHC, WB
Recommended Dilution:	WB: 1000-5000 WB positive control: 231 cell and human fetal liver tissue IHC: 25-100 Positive control: Human breast cancer Predicted cell location: Cytoplasm
Reactivity:	Human, Mouse
Host:	Rabbit
Isotype:	IgG
Clonality:	Polyclonal
Immunogen:	Full length fusion protein
Formulation:	pH7.4 PBS, 0.05% NaN ₃ , 40% Glycerol
Concentration:	lot specific
Purification:	Antigen affinity purification
Conjugation:	Unconjugated
Storage:	Store at -20°C as received.
Stability:	Stable for 12 months from date of receipt.
Predicted Protein Size:	39 kDa
Gene Name:	tribbles pseudokinase 2
Database Link:	NP_067675 Entrez Gene 217410 Mouse Entrez Gene 28951 Human Q92519

Background: This gene encodes one of three members of the Tribbles family. The Tribbles members share a Trb domain, which is homologous to protein serine-threonine kinases, but lacks the active site lysine and probably lacks a catalytic function. The Tribbles proteins interact and modulate the activity of signal transduction pathways in a number of physiological and pathological processes.

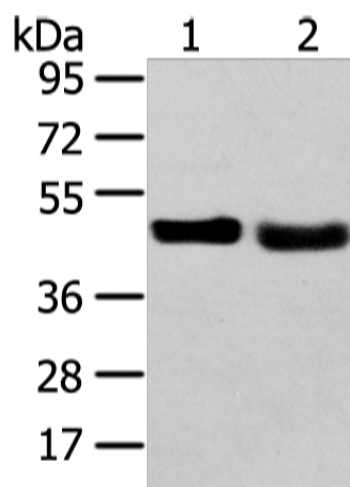


[View online »](#)

Synonyms: C5FW; GS3955; TRB2

Protein Families: Druggable Genome, Protein Kinase

Product images:



Gel: 8%SDS-PAGE

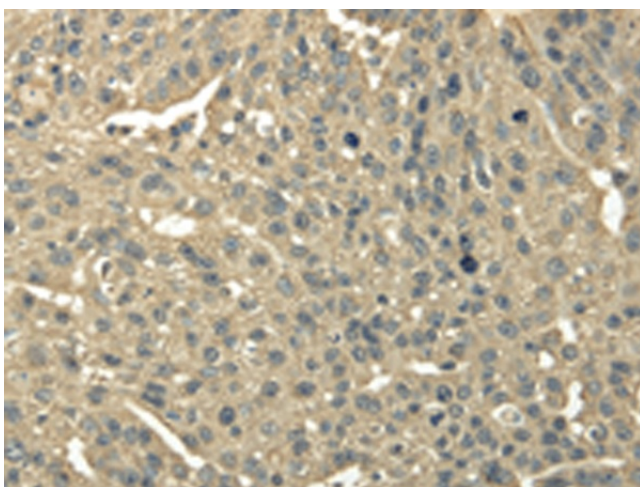
Lysate: 40 μ g

Lane 1-2: 231 cell and human fetal liver tissue

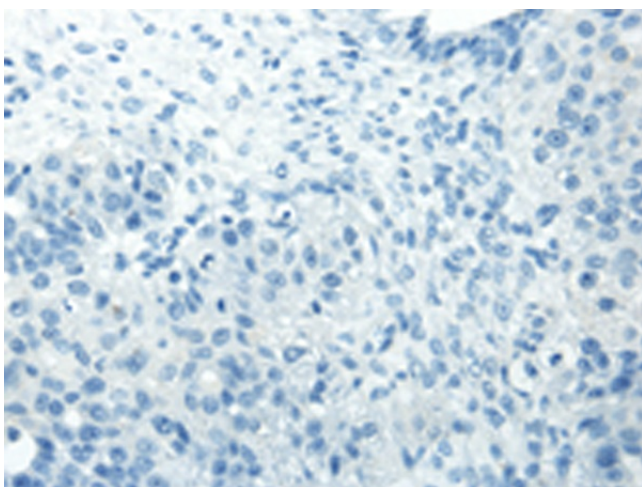
Primary antibody: TA350539 (TRIB2 Antibody) at dilution 1/450

Secondary antibody: Goat anti rabbit IgG at 1/8000 dilution

Exposure time: 1 minute



Immunohistochemistry of paraffin-embedded Human breast cancer tissue using TA350539 (TRIB2 Antibody) at dilution 1/30 (Original magnification: \times 200)



Immunohistochemistry of paraffin-embedded Human breast cancer tissue using TA350539 (TRIB2 Antibody) at dilution 1/30, treated with fusion protein. (Original magnification: ×200)