

Product datasheet for **TA350535**

MED28 Rabbit Polyclonal Antibody

Product data:

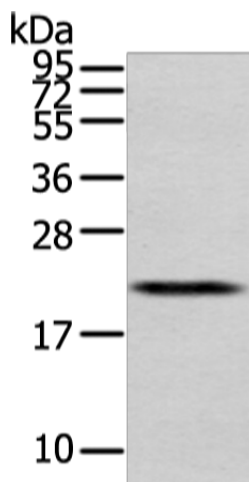
Product Type:	Primary Antibodies
Applications:	IHC, WB
Recommended Dilution:	WB: 500-2000 WB positive control: Human placenta tissue IHC: 25-100 Positive control: Human prostate cancer Predicted cell location: Cytoplasm or Nucleus
Reactivity:	Human, Mouse, Rat
Host:	Rabbit
Isotype:	IgG
Clonality:	Polyclonal
Immunogen:	Full length fusion protein
Formulation:	pH7.4 PBS, 0.05% NaN ₃ , 40% Glycerol
Concentration:	lot specific
Purification:	Antigen affinity purification
Conjugation:	Unconjugated
Storage:	Store at -20°C as received.
Stability:	Stable for 12 months from date of receipt.
Predicted Protein Size:	20 kDa
Gene Name:	mediator complex subunit 28
Database Link:	NP_079481 Entrez Gene 66999 Mouse Entrez Gene 80306 Human Q9H204
Background:	Med28 (mediator complex subunit 28), also known as EG1 (endothelial-derived protein 1), magicin (merlin and Grb2-interacting cytoskeletal protein) or tumor angiogenesis marker EG-1, is a 178 amino acid subunit of the Mediator complex that localizes to both nucleus and cytoplasm.
Synonyms:	1500003D12Rik; EG1; magicin



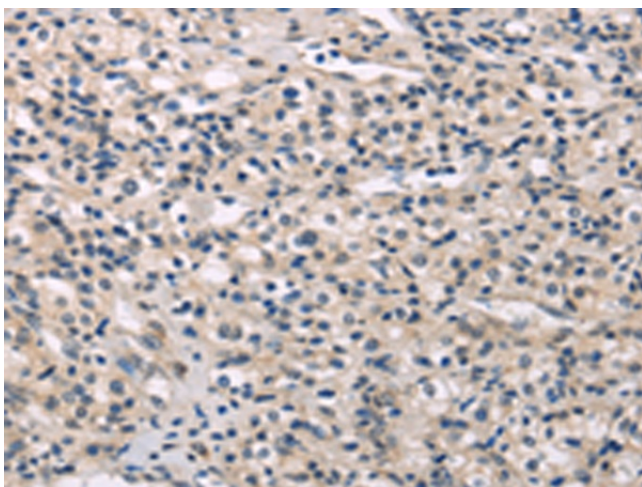
[View online »](#)

Protein Families: Transcription Factors

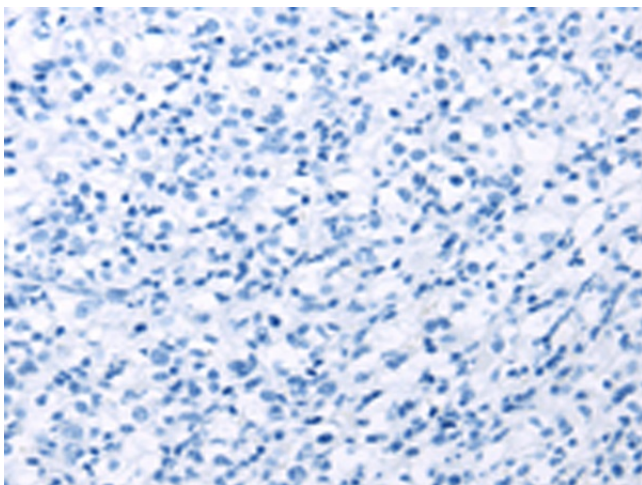
Product images:



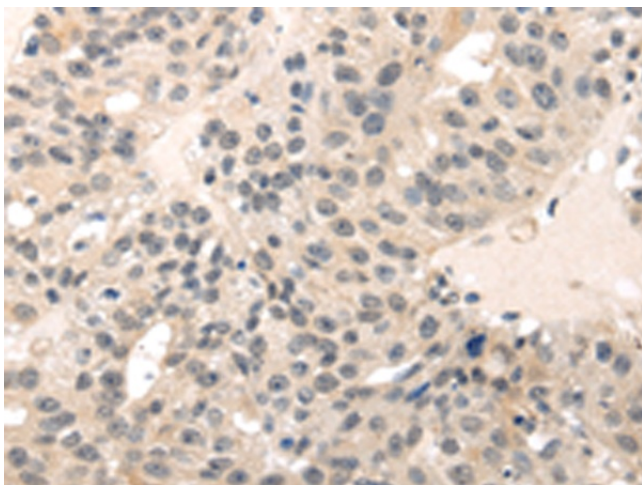
Gel: 12%SDS-PAGE
Lysate: 40 μ g
Lane: Human placenta tissue
Primary antibody: TA350535 (MED28 Antibody) at dilution 1/400
Secondary antibody: Goat anti rabbit IgG at 1/8000 dilution
Exposure time: 30 seconds



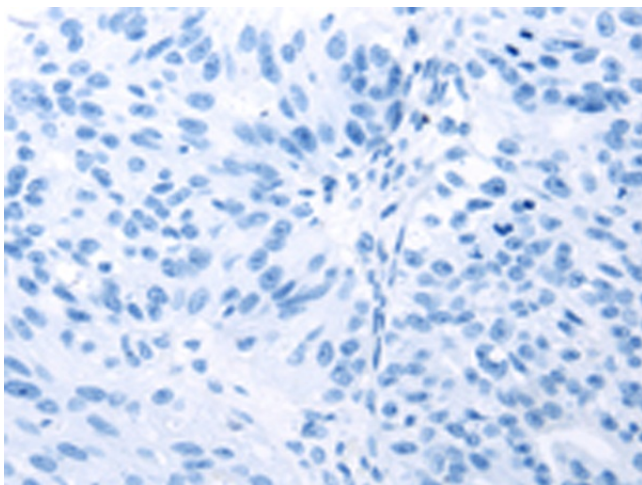
Immunohistochemistry of paraffin-embedded Human prostate cancer tissue using TA350535 (MED28 Antibody) at dilution 1/30 (Original magnification: \times 200)



Immunohistochemistry of paraffin-embedded Human prostate cancer tissue using TA350535 (MED28 Antibody) at dilution 1/30, treated with fusion protein. (Original magnification: ×200)



Immunohistochemistry of paraffin-embedded Human breast cancer tissue using TA350535 (MED28 Antibody) at dilution 1/30 (Original magnification: ×200)



Immunohistochemistry of paraffin-embedded Human breast cancer tissue using TA350535 (MED28 Antibody) at dilution 1/30, treated with fusion protein. (Original magnification: ×200)