

## Product datasheet for **TA350533**

### Transglutaminase 5 (TGM5) Rabbit Polyclonal Antibody

#### Product data:

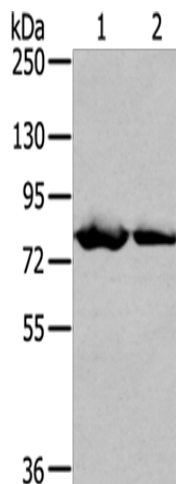
Product Type:	Primary Antibodies
Applications:	IHC, WB
Recommended Dilution:	WB: 500-2000 WB positive control: Mouse heart tissue and MCF7 cells IHC: 25-100 Positive control: Human liver cancer Predicted cell location: Cytoplasm and Cell membrane
Reactivity:	Human, Mouse
Host:	Rabbit
Isotype:	IgG
Clonality:	Polyclonal
Immunogen:	Fusion protein of human TGM5
Formulation:	pH7.4 PBS, 0.05% NaN <sub>3</sub> , 40% Glycerol
Concentration:	lot specific
Purification:	Antigen affinity purification
Conjugation:	Unconjugated
Storage:	Store at -20°C as received.
Stability:	Stable for 12 months from date of receipt.
Predicted Protein Size:	81 kDa
Gene Name:	transglutaminase 5
Database Link:	<a href="#">NP_963925</a> <a href="#">Entrez Gene 74176 Mouse</a> <a href="#">Entrez Gene 9333 Human</a> <a href="#">O43548</a>
Background:	This gene encodes a member of the transglutaminase family. The encoded protein catalyzes formation of protein cross-links between glutamine and lysine residues, often resulting in stabilization of protein assemblies. This reaction is calcium dependent. Mutations in this gene have been associated with acral peeling skin syndrome.
Synonyms:	PSS2; TGASE5; TGASEX; TGM6; TGMX; TGX



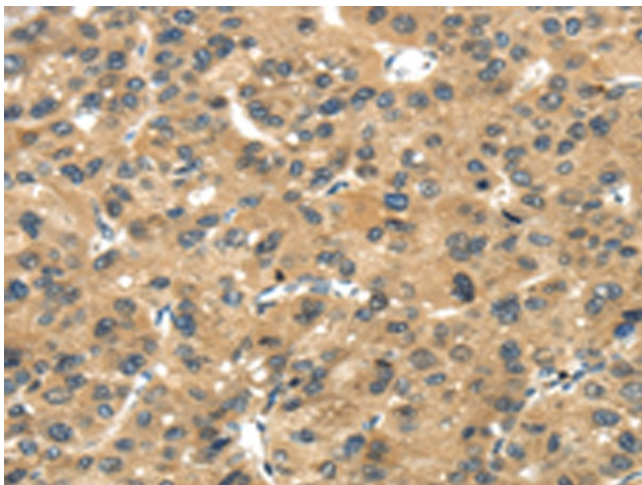
[View online »](#)

Protein Families: Druggable Genome

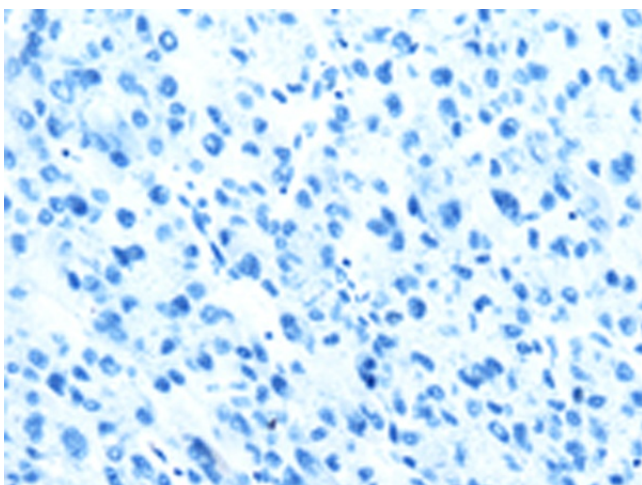
### Product images:



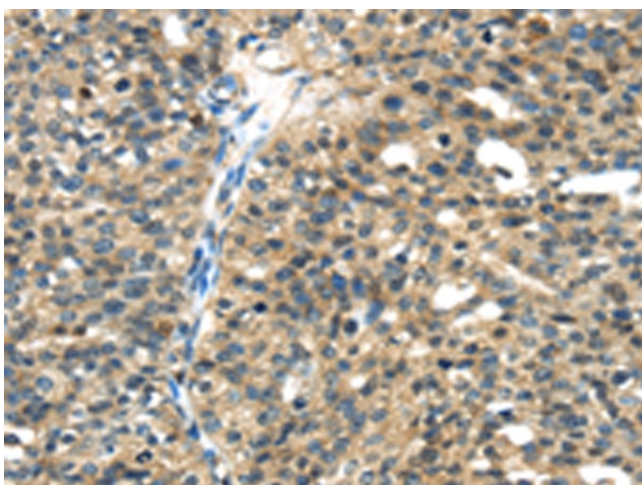
Gel: 6%SDS-PAGE  
Lysate: 40 µg  
Lane 1-2: Mouse heart tissue  
MCF7 cells  
Primary antibody: TA350533 (TGM5 Antibody) at  
dilution 1/400  
Secondary antibody: Goat anti rabbit IgG at  
1/8000 dilution  
Exposure time: 2 minutes



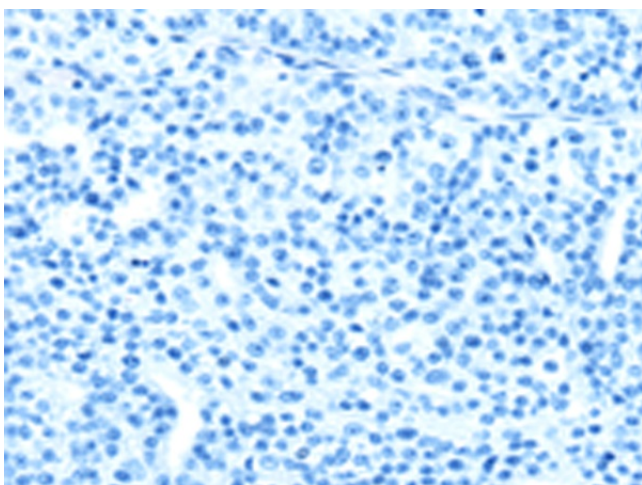
Immunohistochemistry of paraffin-embedded  
Human liver cancer tissue using TA350533 (TGM5  
Antibody) at dilution 1/30 (Original magnification:  
×200)



Immunohistochemistry of paraffin-embedded Human liver cancer tissue using TA350533 (TGM5 Antibody) at dilution 1/30, treated with fusion protein. (Original magnification:  $\times 200$ )



Immunohistochemistry of paraffin-embedded Human breast cancer tissue using TA350533 (TGM5 Antibody) at dilution 1/30 (Original magnification:  $\times 200$ )



Immunohistochemistry of paraffin-embedded Human breast cancer tissue using TA350533 (TGM5 Antibody) at dilution 1/30, treated with fusion protein. (Original magnification:  $\times 200$ )