

Product datasheet for **TA350532S**

Transglutaminase 4 (TGM4) Rabbit Polyclonal Antibody

Product data:

Product Type:	Primary Antibodies
Applications:	IHC, WB
Recommended Dilution:	WB: 500-2000 WB positive control: Hela, Incap, skov3, 293T and TM4 cell IHC: 25-100 Positive control: Human prostate cancer Predicted cell location: Cytoplasm
Reactivity:	Human
Host:	Rabbit
Isotype:	IgG
Clonality:	Polyclonal
Immunogen:	Fusion protein of human TGM4
Formulation:	pH7.4 PBS, 0.05% NaN ₃ , 40% Glycerol
Purification:	Antigen affinity purification
Conjugation:	Unconjugated
Storage:	Store at -20°C as received.
Stability:	Stable for 12 months from date of receipt.
Predicted Protein Size:	77 kDa
Gene Name:	transglutaminase 4
Database Link:	NP_003232 Entrez Gene 7047 Human P49221

Background: Transglutaminase 4 also known as TGM4, TGP or hTGP, is a typical TGase that is specifically expressed in prostate tissue. TGM4 are intercellularly localizing, Ca²⁺-dependent enzymes, which catalyze the formation of isopeptide bonds by transferring an amine on to glutaminyl residues, thereby cross-linking glutamine residues and lysine residues in substrate proteins. TGases influence numerous biological processes including blood coagulation, epidermal differentiation, seminal fluid coagulation, fertilization, cell differentiation and apoptosis.

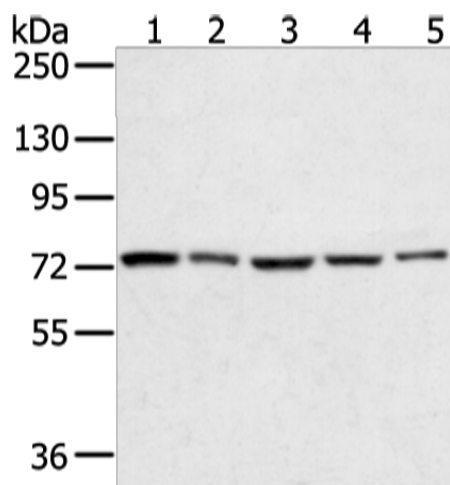


[View online »](#)

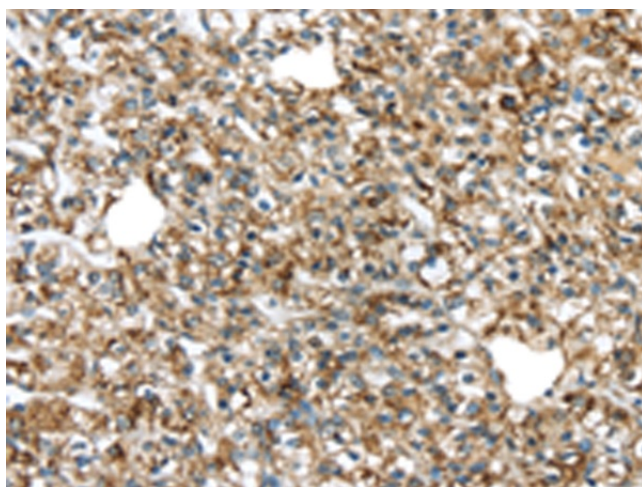
Synonyms: hTGP; TGP

Protein Families: Druggable Genome

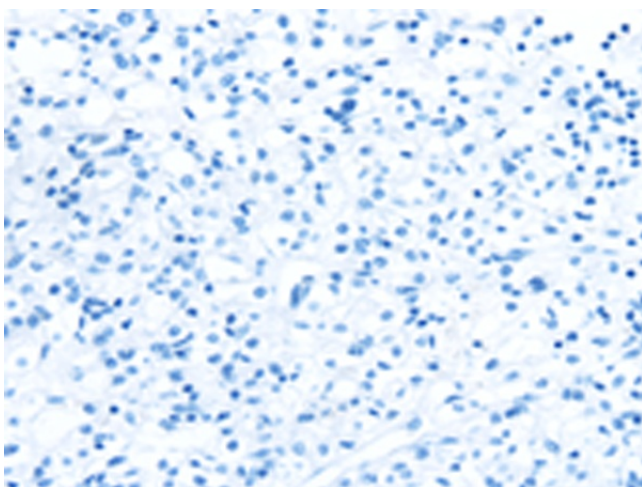
Product images:



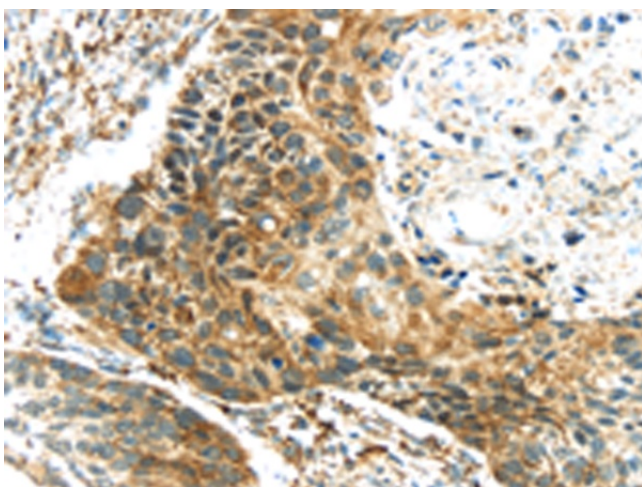
Gel: 6%SDS-PAGE
Lysate: 40 μ g
Lane 1-5: HeLa
Incap
skov3
293T and TM4 cell
Primary antibody: [TA350532] (TGM4 Antibody) at dilution 1/400
Secondary antibody: Goat anti rabbit IgG at 1/8000 dilution
Exposure time: 10 seconds



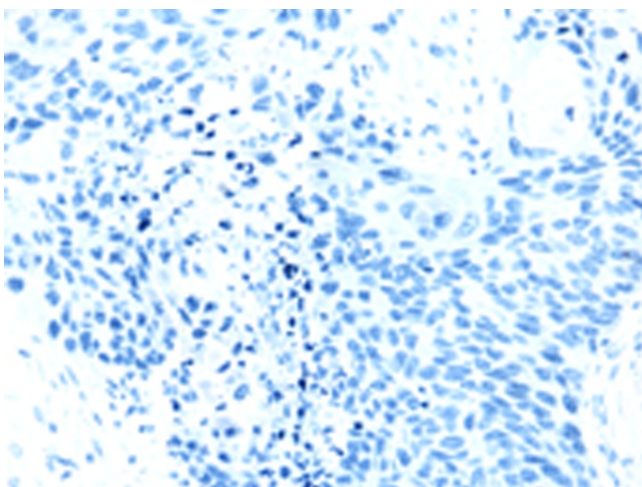
Immunohistochemistry of paraffin-embedded Human prostate cancer tissue using [TA350532] (TGM4 Antibody) at dilution 1/20 (Original magnification: $\times 200$)



Immunohistochemistry of paraffin-embedded Human prostate cancer tissue using [TA350532] (TGM4 Antibody) at dilution 1/20, treated with fusion protein. (Original magnification: $\times 200$)



Immunohistochemistry of paraffin-embedded Human esophagus cancer tissue using [TA350532] (TGM4 Antibody) at dilution 1/20 (Original magnification: $\times 200$)



Immunohistochemistry of paraffin-embedded Human esophagus cancer tissue using [TA350532] (TGM4 Antibody) at dilution 1/20, treated with fusion protein. (Original magnification: $\times 200$)