

## Product datasheet for **TA350532**

### Transglutaminase 4 (TGM4) Rabbit Polyclonal Antibody

#### Product data:

Product Type:	Primary Antibodies
Applications:	IHC, WB
Recommended Dilution:	WB: 500-2000 WB positive control: Hela, Incap, skov3, 293T and TM4 cell IHC: 25-100 Positive control: Human prostate cancer Predicted cell location: Cytoplasm
Reactivity:	Human
Host:	Rabbit
Isotype:	IgG
Clonality:	Polyclonal
Immunogen:	Fusion protein of human TGM4
Formulation:	pH7.4 PBS, 0.05% NaN <sub>3</sub> , 40% Glycerol
Concentration:	lot specific
Purification:	Antigen affinity purification
Conjugation:	Unconjugated
Storage:	Store at -20°C as received.
Stability:	Stable for 12 months from date of receipt.
Predicted Protein Size:	77 kDa
Gene Name:	transglutaminase 4
Database Link:	<a href="#">NP_003232</a> <a href="#">Entrez Gene 7047 Human P49221</a>



[View online »](#)

**Background:**

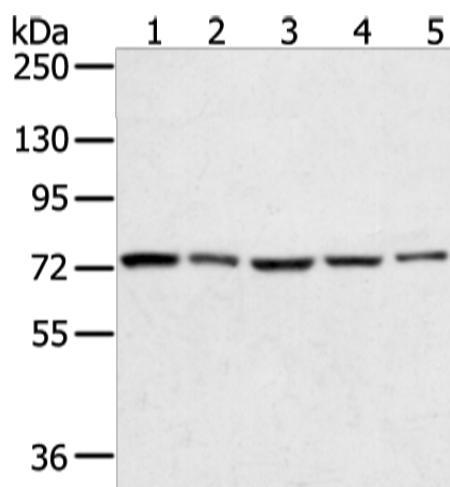
Transglutaminase 4 also known as TGM4, TGP or hTGP, is a typical TGase that is specifically expressed in prostate tissue. TGM4 are intercellularly localizing, Ca<sup>2+</sup>-dependent enzymes, which catalyze the formation of isopeptide bonds by transferring an amine on to glutaminy residues, thereby cross-linking glutamine residues and lysine residues in substrate proteins. TGases influence numerous biological processes including blood coagulation, epidermal differentiation, seminal fluid coagulation, fertilization, cell differentiation and apoptosis.

**Synonyms:**

hTGP; TGP

**Protein Families:**

Druggable Genome

**Product images:**

Gel: 6%SDS-PAGE

Lysate: 40 µg

Lane 1-5: HeLa

Incap

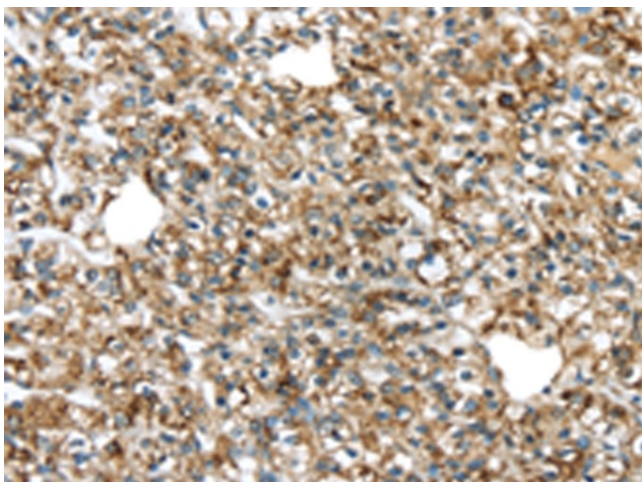
skov3

293T and TM4 cell

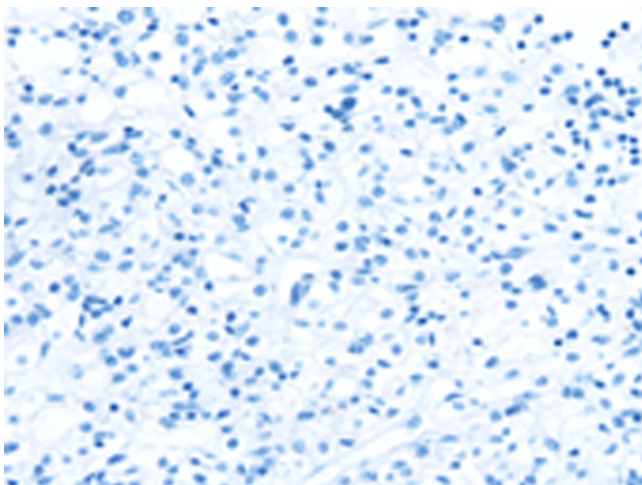
Primary antibody: TA350532 (TGM4 Antibody) at dilution 1/400

Secondary antibody: Goat anti rabbit IgG at 1/8000 dilution

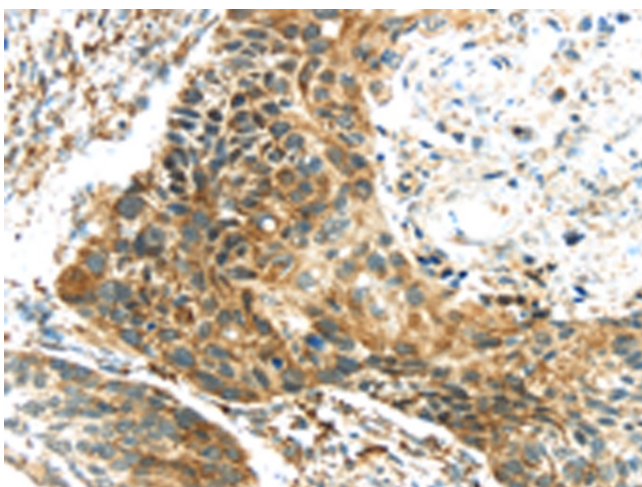
Exposure time: 10 seconds



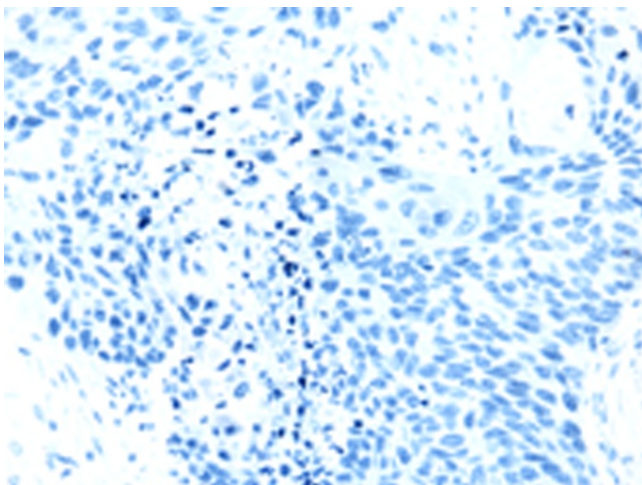
Immunohistochemistry of paraffin-embedded Human prostate cancer tissue using TA350532 (TGM4 Antibody) at dilution 1/20 (Original magnification: ×200)



Immunohistochemistry of paraffin-embedded Human prostate cancer tissue using TA350532 (TGM4 Antibody) at dilution 1/20, treated with fusion protein. (Original magnification: ×200)



Immunohistochemistry of paraffin-embedded Human esophagus cancer tissue using TA350532 (TGM4 Antibody) at dilution 1/20 (Original magnification: ×200)



Immunohistochemistry of paraffin-embedded Human esophagus cancer tissue using TA350532 (TGM4 Antibody) at dilution 1/20, treated with fusion protein. (Original magnification: ×200)