

Product datasheet for **TA350531**

Transaldolase 1 (TALDO1) Rabbit Polyclonal Antibody

Product data:

Product Type:	Primary Antibodies
Applications:	IHC, WB
Recommended Dilution:	WB: 500-2000 WB positive control: Mouse kidney and Human kidney tissue, Mouse brain tissue and A431 cells, Human placenta and fetal brain tissue IHC: 25-100 Positive control: Human prostate cancer Predicted cell location: Nucleus
Reactivity:	Human, Mouse, Rat
Host:	Rabbit
Isotype:	IgG
Clonality:	Polyclonal
Immunogen:	Fusion protein of human TALDO1
Formulation:	pH7.4 PBS, 0.05% NaN ₃ , 40% Glycerol
Concentration:	lot specific
Purification:	Antigen affinity purification
Conjugation:	Unconjugated
Storage:	Store at -20°C as received.
Stability:	Stable for 12 months from date of receipt.
Predicted Protein Size:	38 kDa
Gene Name:	transaldolase 1
Database Link:	NP_006746 Entrez Gene 6888 Human P37837



[View online »](#)

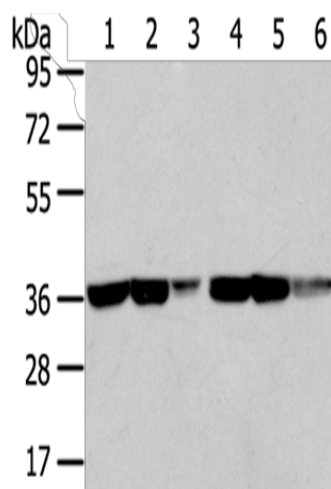
Background: Transaldolase 1 is a key enzyme of the nonoxidative pentose phosphate pathway providing ribose-5-phosphate for nucleic acid synthesis and NADPH for lipid biosynthesis. This pathway can also maintain glutathione at a reduced state and thus protect sulfhydryl groups and cellular integrity from oxygen radicals. The functional gene of transaldolase 1 is located on chromosome 11 and a pseudogene is identified on chromosome 1 but there are conflicting map locations. The second and third exon of this gene were developed by insertion of a retrotransposable element. This gene is thought to be involved in multiple sclerosis.

Synonyms: TAL; TAL-H; TALDOR; TALH

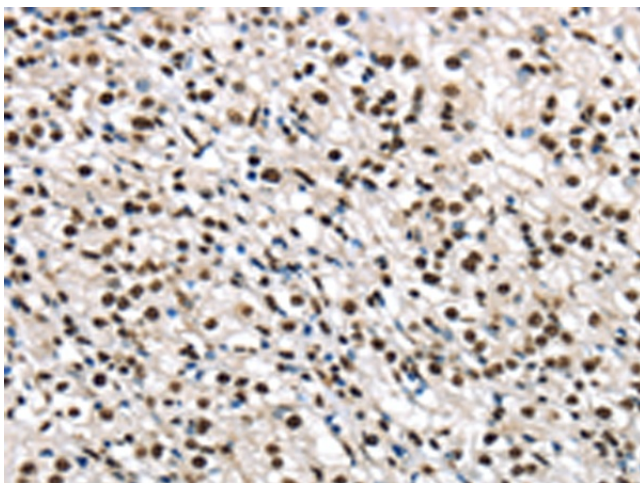
Protein Families: Druggable Genome

Protein Pathways: Metabolic pathways, Pentose phosphate pathway

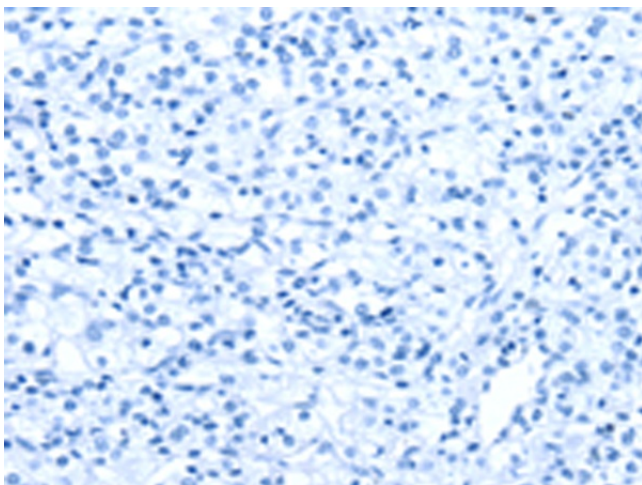
Product images:



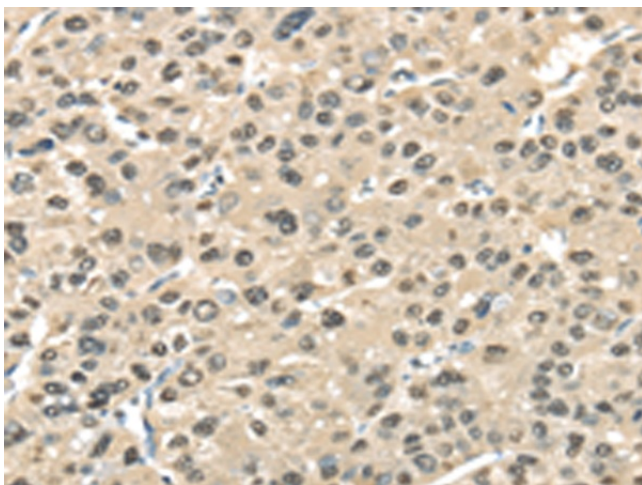
Gel: 8%SDS-PAGE
Lysate: 40 μ g
Lane 1-6: Mouse kidney tissue
Human kidney tissue
Mouse brain tissue
A431 cells
Human placenta tissue
Human fetal brain tissue
Primary antibody: TA350531 (TALDO1 Antibody)
at dilution 1/400
Secondary antibody: Goat anti rabbit IgG at
1/8000 dilution
Exposure time: 10 seconds



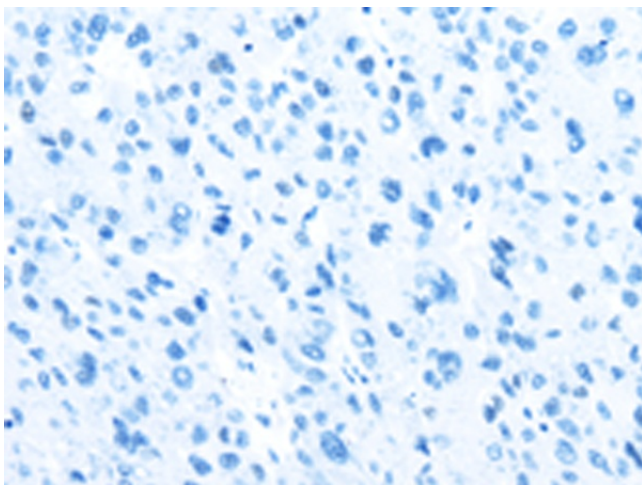
Immunohistochemistry of paraffin-embedded
Human prostate cancer tissue using TA350531
(TALDO1 Antibody) at dilution 1/30 (Original
magnification: \times 200)



Immunohistochemistry of paraffin-embedded Human prostate cancer tissue using TA350531 (TALDO1 Antibody) at dilution 1/30, treated with fusion protein. (Original magnification: $\times 200$)



Immunohistochemistry of paraffin-embedded Human liver cancer tissue using TA350531 (TALDO1 Antibody) at dilution 1/30 (Original magnification: $\times 200$)



Immunohistochemistry of paraffin-embedded Human liver cancer tissue using TA350531 (TALDO1 Antibody) at dilution 1/30, treated with fusion protein. (Original magnification: $\times 200$)