

## Product datasheet for **TA350529S**

### TPX2 Rabbit Polyclonal Antibody

#### Product data:

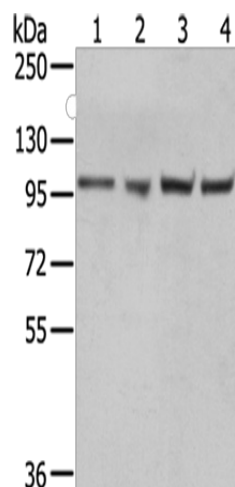
Product Type:	Primary Antibodies
Applications:	IHC, WB
Recommended Dilution:	WB: 500-2000 WB positive control: A431, 293T, Hela and K562 cells IHC: 30-150 Positive control: Human esophagus cancer Predicted cell location: Nucleus
Reactivity:	Human, Mouse
Host:	Rabbit
Isotype:	IgG
Clonality:	Polyclonal
Immunogen:	Fusion protein of human TPX2
Formulation:	pH7.4 PBS, 0.05% NaN <sub>3</sub> , 40% Glycerol
Purification:	Antigen affinity purification
Conjugation:	Unconjugated
Storage:	Store at -20°C as received.
Stability:	Stable for 12 months from date of receipt.
Predicted Protein Size:	86 kDa
Gene Name:	TPX2, microtubule nucleation factor
Database Link:	<a href="#">NP_036244</a> <a href="#">Entrez Gene 72119 Mouse</a> <a href="#">Entrez Gene 22974 Human</a> <a href="#">Q9ULW0</a>
Background:	Spindle assembly factor. Required for normal assembly of mitotic spindles. Required for normal assembly of microtubules during apoptosis. Required for chromatin and/or kinetochore dependent microtubule nucleation. Mediates AURKA localization to spindle microtubules. Activates AURKA by promoting its autophosphorylation at 'Thr-288' and protects this residue against dephosphorylation.
Synonyms:	C20orf1; C20orf2; DIL-2; DIL2; FLS353; GD:C20orf1; HCA519; HCTP4; p100; REPP86



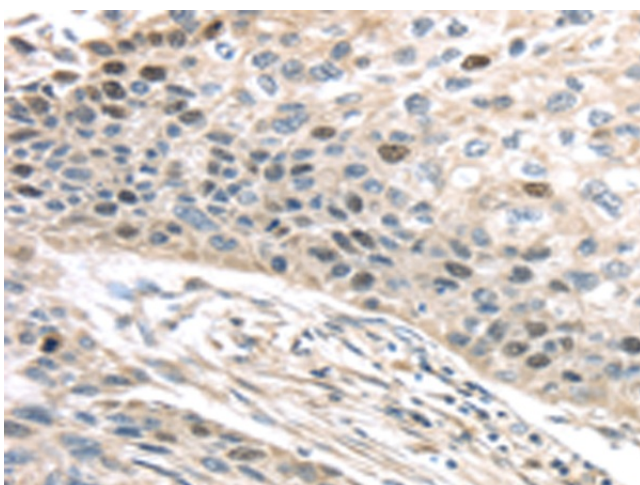
[View online »](#)

Protein Families: Druggable Genome, Stem cell - Pluripotency

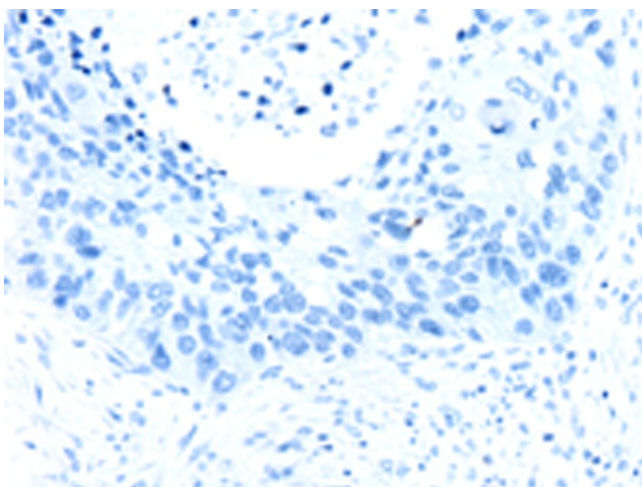
### Product images:



Gel: 6%SDS-PAGE  
Lysate: 40 µg  
Lane 1-4: A431 cells  
293T cells  
HeLa cells  
K562 cells  
Primary antibody: [TA350529] (TPX2 Antibody) at dilution 1/800  
Secondary antibody: Goat anti rabbit IgG at 1/8000 dilution  
Exposure time: 10 seconds



Immunohistochemistry of paraffin-embedded Human esophagus cancer tissue using [TA350529] (TPX2 Antibody) at dilution 1/40 (Original magnification: ×200)



Immunohistochemistry of paraffin-embedded Human esophagus cancer tissue using [TA350529] (TPX2 Antibody) at dilution 1/40, treated with fusion protein. (Original magnification:  $\times 200$ )