

Product datasheet for **TA350529**

TPX2 Rabbit Polyclonal Antibody

Product data:

Product Type:	Primary Antibodies
Applications:	IHC, WB
Recommended Dilution:	WB: 500-2000 WB positive control: A431, 293T, HeLa and K562 cells IHC: 30-150 Positive control: Human esophagus cancer Predicted cell location: Nucleus
Reactivity:	Human, Mouse
Host:	Rabbit
Isotype:	IgG
Clonality:	Polyclonal
Immunogen:	Fusion protein of human TPX2
Formulation:	pH7.4 PBS, 0.05% NaN ₃ , 40% Glycerol
Concentration:	lot specific
Purification:	Antigen affinity purification
Conjugation:	Unconjugated
Storage:	Store at -20°C as received.
Stability:	Stable for 12 months from date of receipt.
Predicted Protein Size:	86 kDa
Gene Name:	TPX2, microtubule nucleation factor
Database Link:	NP_036244 Entrez Gene 72119 Mouse Entrez Gene 22974 Human Q9ULW0

Background: Spindle assembly factor. Required for normal assembly of mitotic spindles. Required for normal assembly of microtubules during apoptosis. Required for chromatin and/or kinetochore dependent microtubule nucleation. Mediates AURKA localization to spindle microtubules. Activates AURKA by promoting its autophosphorylation at 'Thr-288' and protects this residue against dephosphorylation.

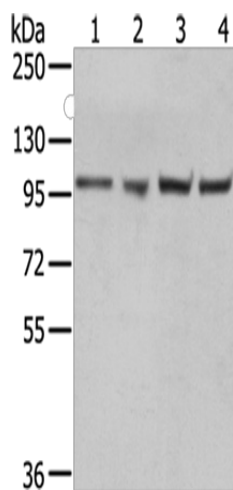


[View online »](#)

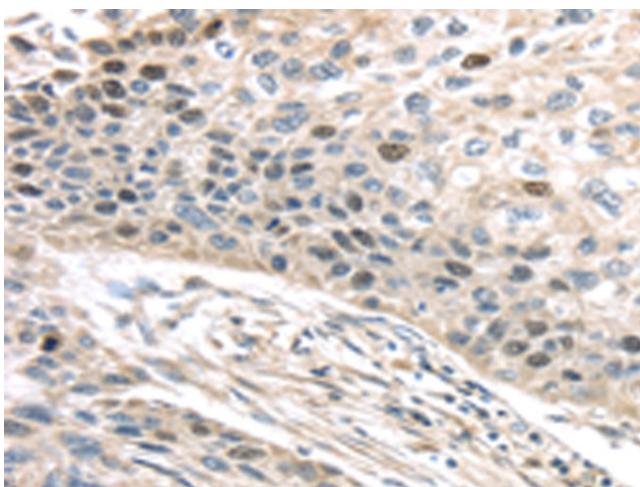
Synonyms: C20orf1; C20orf2; DIL-2; DIL2; FLS353; GD:C20orf1; HCA519; HCTP4; p100; REPP86

Protein Families: Druggable Genome, Stem cell - Pluripotency

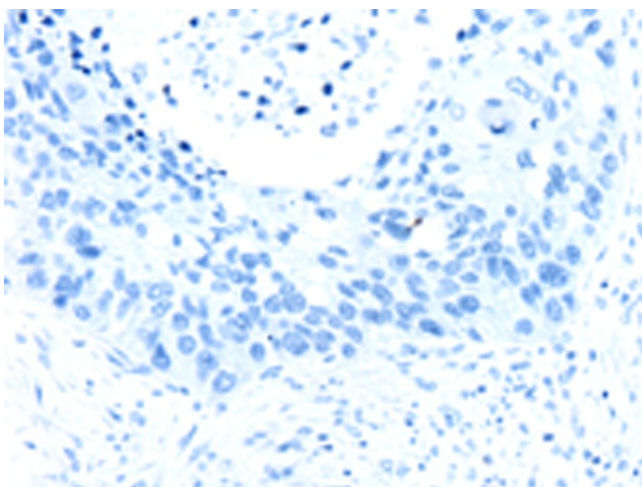
Product images:



Gel: 6%SDS-PAGE
 Lysate: 40 µg
 Lane 1-4: A431 cells
 293T cells
 HeLa cells
 K562 cells
 Primary antibody: TA350529 (TPX2 Antibody) at dilution 1/800
 Secondary antibody: Goat anti rabbit IgG at 1/8000 dilution
 Exposure time: 10 seconds



Immunohistochemistry of paraffin-embedded Human esophagus cancer tissue using TA350529 (TPX2 Antibody) at dilution 1/40 (Original magnification: ×200)



Immunohistochemistry of paraffin-embedded Human esophagus cancer tissue using TA350529 (TPX2 Antibody) at dilution 1/40, treated with fusion protein. (Original magnification: $\times 200$)