

Product datasheet for **TA350524**

TMPRSS11D Rabbit Polyclonal Antibody

Product data:

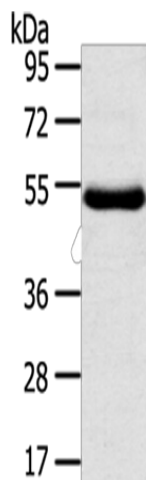
Product Type:	Primary Antibodies
Applications:	IHC, WB
Recommended Dilution:	WB: 500-2000 WB positive control: Human thigh malignant fibrous histiocytoma tissue IHC: 25-100 Positive control: Human liver cancer Predicted cell location: Cytoplasm and Cell membrane
Reactivity:	Human
Host:	Rabbit
Isotype:	IgG
Clonality:	Polyclonal
Immunogen:	Fusion protein of human TMPRSS11D
Formulation:	pH7.4 PBS, 0.05% NaN ₃ , 40% Glycerol
Concentration:	lot specific
Purification:	Antigen affinity purification
Conjugation:	Unconjugated
Storage:	Store at -20°C as received.
Stability:	Stable for 12 months from date of receipt.
Predicted Protein Size:	46 kDa
Gene Name:	transmembrane protease, serine 11D
Database Link:	NP_004253 Entrez Gene 9407 Human O60235
Background:	This gene encodes a trypsin-like serine protease released from the submucosal serous glands onto mucous membrane. It is a type II integral membrane protein and has 29-38% identity in the sequence of the catalytic region with human hepsin, enteropeptidase, acrosin, and mast cell tryptase. The noncatalytic region has little similarity to other known proteins.
Synonyms:	HAT



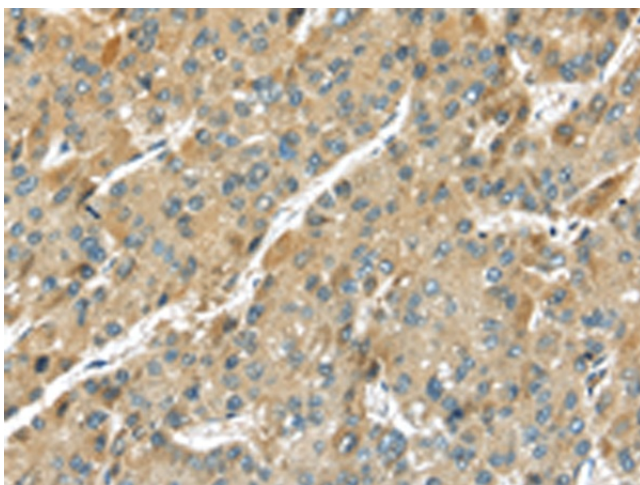
[View online »](#)

Protein Families: Druggable Genome, Protease, Secreted Protein, Transmembrane

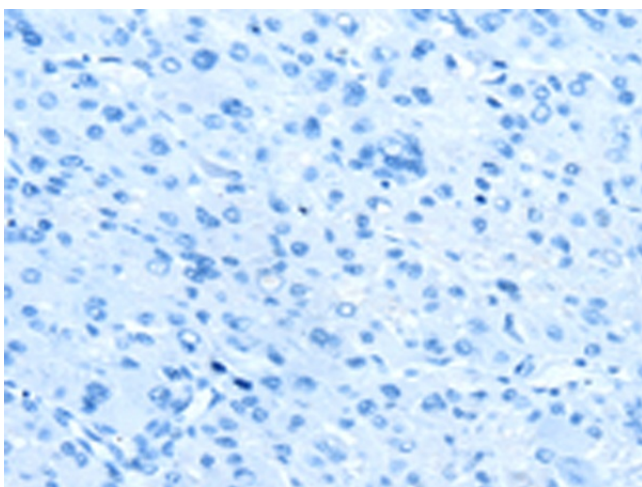
Product images:



Gel: 8%SDS-PAGE
Lysate: 40 μ g
Lane: Human thigh malignant fibrous histiocytoma tissue
Primary antibody: TA350524 (TMPRSS11D Antibody) at dilution 1/800
Secondary antibody: Goat anti rabbit IgG at 1/8000 dilution
Exposure time: 1 minute



Immunohistochemistry of paraffin-embedded Human liver cancer tissue using TA350524 (TMPRSS11D Antibody) at dilution 1/35 (Original magnification: \times 200)



Immunohistochemistry of paraffin-embedded Human liver cancer tissue using TA350524 (TMPRSS11D Antibody) at dilution 1/35, treated with fusion protein. (Original magnification: $\times 200$)