

## Product datasheet for **TA350520S**

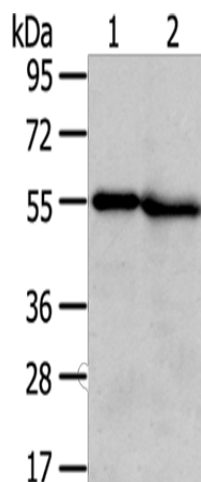
### TMPRSS5 Rabbit Polyclonal Antibody

#### Product data:

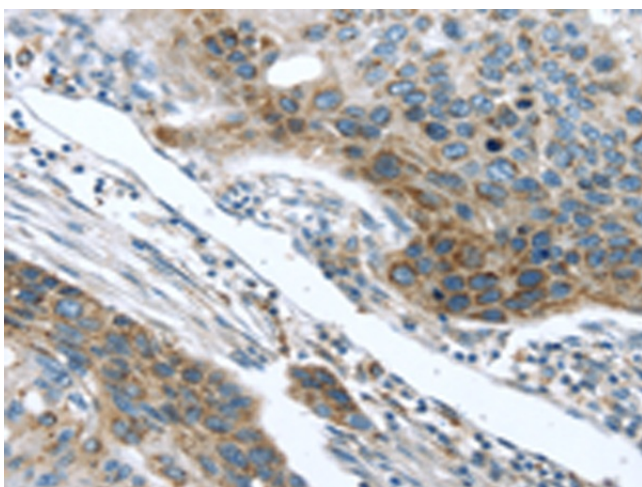
Product Type:	Primary Antibodies
Applications:	IHC, WB
Recommended Dilution:	WB: 200-1000 WB positive control: Human normal liver and kidney tissue IHC: 10-50 Positive control: Human esophagus cancer Predicted cell location: Cell membrane
Reactivity:	Human, Mouse
Host:	Rabbit
Isotype:	IgG
Clonality:	Polyclonal
Immunogen:	Fusion protein of human TMPRSS5
Formulation:	pH7.4 PBS, 0.05% NaN <sub>3</sub> , 40% Glycerol
Purification:	Antigen affinity purification
Conjugation:	Unconjugated
Storage:	Store at -20°C as received.
Stability:	Stable for 12 months from date of receipt.
Predicted Protein Size:	50 kDa
Gene Name:	transmembrane protease, serine 5
Database Link:	<a href="#">NP_110397</a> <a href="#">Entrez Gene 80893 Mouse</a> <a href="#">Entrez Gene 80975 Human</a> <a href="#">Q9H3S3</a>
Background:	This gene encodes a protein that belongs to the serine protease family. Serine proteases are known to be involved in many physiological and pathological processes. Alternative splicing results in multiple transcript variants.
Synonyms:	SPINESIN
Protein Families:	Druggable Genome, Protease, Transmembrane



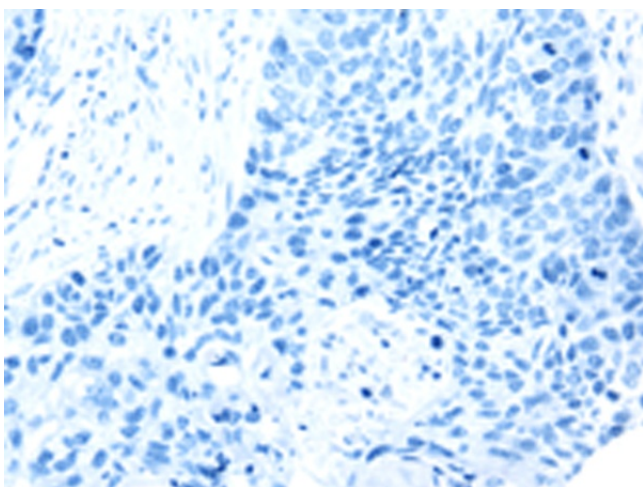
[View online »](#)

**Product images:**

Gel: 8%SDS-PAGE  
Lysate: 40  $\mu$ g  
Lane 1-2: Human normal liver tissue  
Human kidney tissue  
Primary antibody: [TA350520] (TMPRSS5 Antibody) at dilution 1/300  
Secondary antibody: Goat anti rabbit IgG at 1/8000 dilution  
Exposure time: 5 minutes



Immunohistochemistry of paraffin-embedded Human esophagus cancer tissue using [TA350520] (TMPRSS5 Antibody) at dilution 1/25 (Original magnification:  $\times$ 200)



Immunohistochemistry of paraffin-embedded Human esophagus cancer tissue using [TA350520] (TMPRSS5 Antibody) at dilution 1/25, treated with fusion protein. (Original magnification:  $\times 200$ )