

Product datasheet for **TA350517S**

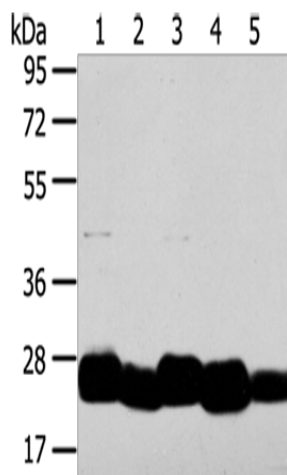
TMED4 Rabbit Polyclonal Antibody

Product data:

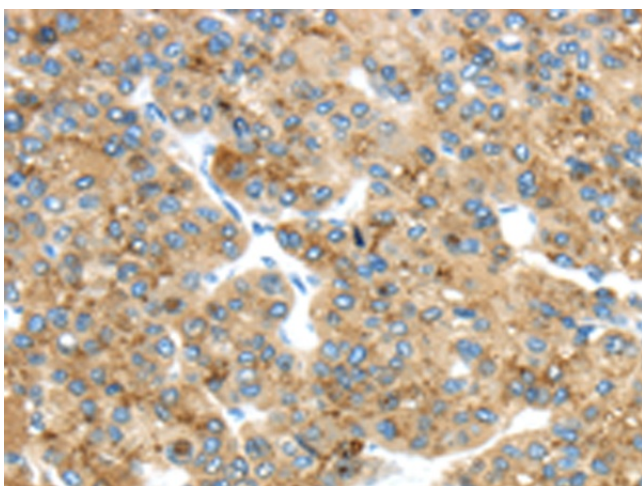
Product Type:	Primary Antibodies
Applications:	IHC, WB
Recommended Dilution:	WB: 1000-5000 WB positive control: HepG2, K562 and Hela cells, A549 cells and Mouse intestines tissue IHC: 30-150 Positive control: Human liver cancer Predicted cell location: Cytoplasm
Reactivity:	Human, Mouse
Host:	Rabbit
Isotype:	IgG
Clonality:	Polyclonal
Immunogen:	Fusion protein of human TMED4
Formulation:	pH7.4 PBS, 0.05% NaN ₃ , 40% Glycerol
Purification:	Antigen affinity purification
Conjugation:	Unconjugated
Storage:	Store at -20°C as received.
Stability:	Stable for 12 months from date of receipt.
Predicted Protein Size:	26 kDa
Gene Name:	transmembrane p24 trafficking protein 4
Database Link:	NP_872353 Entrez Gene 103694 MouseEntrez Gene 222068 Human Q7Z7H5
Background:	Involved in vesicular protein trafficking, mainly in the early secretory pathway. targeting. Involved in the maintenance of the Golgi apparatus. Appears to play a role in the biosynthesis of secreted cargo including processing. Involved in endoplasmic reticulum stress response. May play a role in the regulation of heat-shock response and apoptosis (By similarity).
Synonyms:	ERS25; GMP25iso; HNLF; p24a3; p24alpha3
Protein Families:	Transmembrane



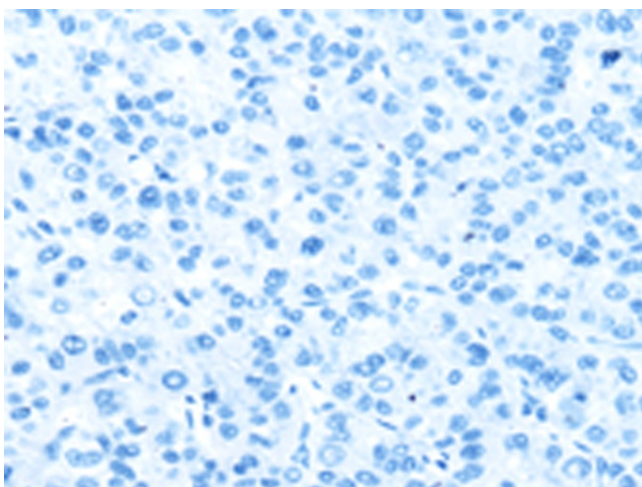
[View online »](#)

Product images:

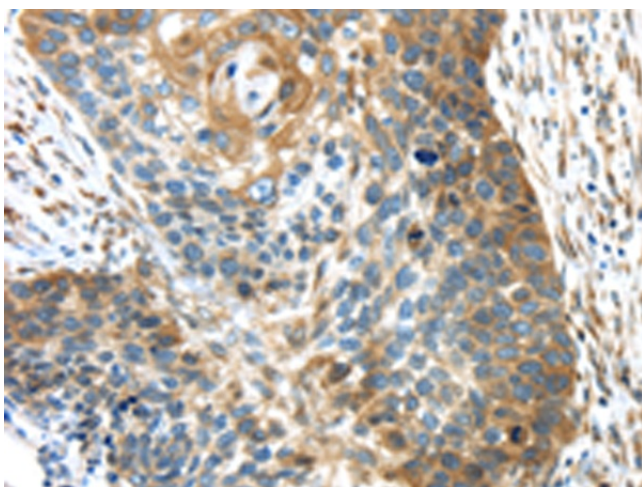
Gel: 8%SDS-PAGE
Lysate: 40 μ g
Lane 1-5: HepG2 cells
K562 cells
Hela cells
A549 cells
Mouse intestines tissue
Primary antibody: [TA350517] (TMED4 Antibody)
at dilution 1/800
Secondary antibody: Goat anti rabbit IgG at
1/8000 dilution
Exposure time: 1 minute



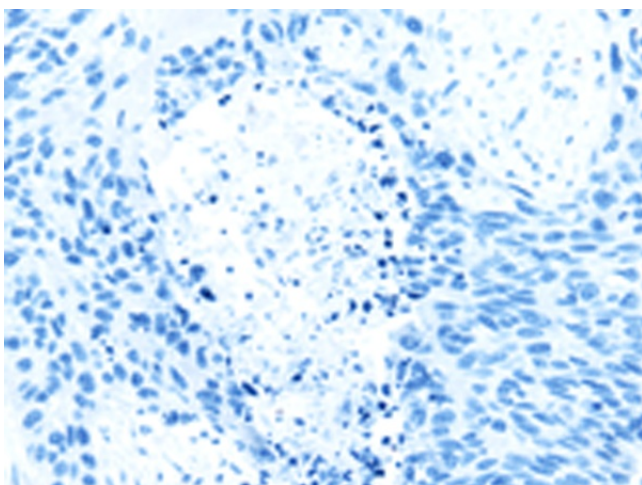
Immunohistochemistry of paraffin-embedded
Human liver cancer tissue using [TA350517]
(TMED4 Antibody) at dilution 1/45 (Original
magnification: $\times 200$)



Immunohistochemistry of paraffin-embedded Human liver cancer tissue using [TA350517] (TMED4 Antibody) at dilution 1/45, treated with fusion protein. (Original magnification: $\times 200$)



Immunohistochemistry of paraffin-embedded Human esophagus cancer tissue using [TA350517] (TMED4 Antibody) at dilution 1/45 (Original magnification: $\times 200$)



Immunohistochemistry of paraffin-embedded Human esophagus cancer tissue using [TA350517] (TMED4 Antibody) at dilution 1/45, treated with fusion protein. (Original magnification: $\times 200$)