

## Product datasheet for **TA350516**

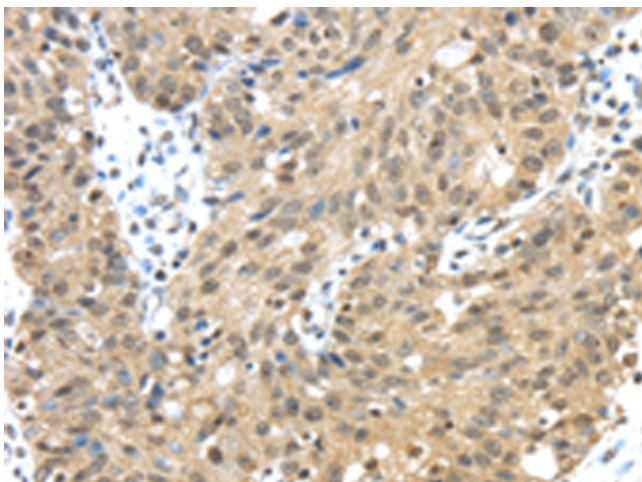
### TMED3 Rabbit Polyclonal Antibody

#### Product data:

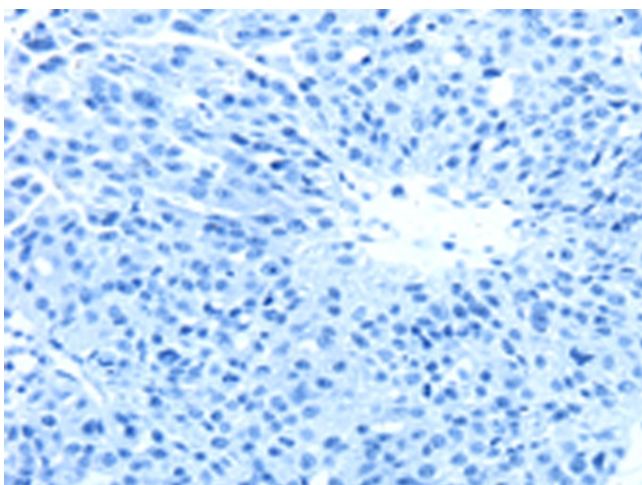
Product Type:	Primary Antibodies
Applications:	IHC
Recommended Dilution:	IHC: 25-100 Positive control: Human breast cancer Predicted cell location: Nucleus and Cytoplasm
Reactivity:	Human, Mouse, Rat
Host:	Rabbit
Isotype:	IgG
Clonality:	Polyclonal
Immunogen:	Fusion protein of human TMED3
Formulation:	pH7.4 PBS, 0.05% NaN <sub>3</sub> , 40% Glycerol
Concentration:	lot specific
Purification:	Antigen affinity purification
Conjugation:	Unconjugated
Storage:	Store at -20°C as received.
Stability:	Stable for 12 months from date of receipt.
Gene Name:	transmembrane p24 trafficking protein 3
Database Link:	<a href="#">NP_031390</a> <a href="#">Entrez Gene 66111 Mouse</a> <a href="#">Entrez Gene 300888 Rat</a> <a href="#">Entrez Gene 23423 Human</a> <a href="#">Q9Y3Q3</a>
Background:	Potential role in vesicular protein trafficking, mainly in the early secretory pathway. Contributes to the coupled localization of TMED2 and TMED10 in the cis-Golgi network.
Synonyms:	C15orf22; P24B; p26
Protein Families:	Transmembrane



[View online »](#)

**Product images:**

Immunohistochemistry of paraffin-embedded Human breast cancer tissue using TA350516 (TMED3 Antibody) at dilution 1/30 (Original magnification:  $\times 200$ )



Immunohistochemistry of paraffin-embedded Human breast cancer tissue using TA350516 (TMED3 Antibody) at dilution 1/30, treated with fusion protein. (Original magnification:  $\times 200$ )