

Product datasheet for **TA350514S**

TMED1 Rabbit Polyclonal Antibody

Product data:

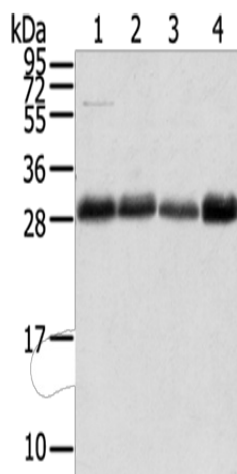
Product Type:	Primary Antibodies
Applications:	IHC, WB
Recommended Dilution:	WB: 500-2000 WB positive control: A172 and 231 cells, Human normal stomach tissue and Hela cells IHC: 25-100 Positive control: Human breast cancer Predicted cell location: Cytoplasm
Reactivity:	Human, Mouse, Rat
Host:	Rabbit
Isotype:	IgG
Clonality:	Polyclonal
Immunogen:	Fusion protein of human TMED1
Formulation:	pH7.4 PBS, 0.05% NaN ₃ , 40% Glycerol
Purification:	Antigen affinity purification
Conjugation:	Unconjugated
Storage:	Store at -20°C as received.
Stability:	Stable for 12 months from date of receipt.
Predicted Protein Size:	25 kDa
Gene Name:	transmembrane p24 trafficking protein 1
Database Link:	NP_006849 Entrez Gene 17083 Mouse Entrez Gene 315461 Rat Entrez Gene 11018 Human Q13445
Background:	This gene belongs to the TMED (transmembrane emp24 domain-containing) protein family, which is involved in the vesicular trafficking of proteins. The protein encoded by this gene was identified by its interaction with interleukin 1 receptor-like 1 (IL1RL1) and may play a role in innate immunity. This protein lacks any similarity to other interleukin 1 ligands. Alternative splicing results in multiple transcript variants of this gene.
Synonyms:	Il1rl1l; IL1RL1LG; p24g1; Tp24



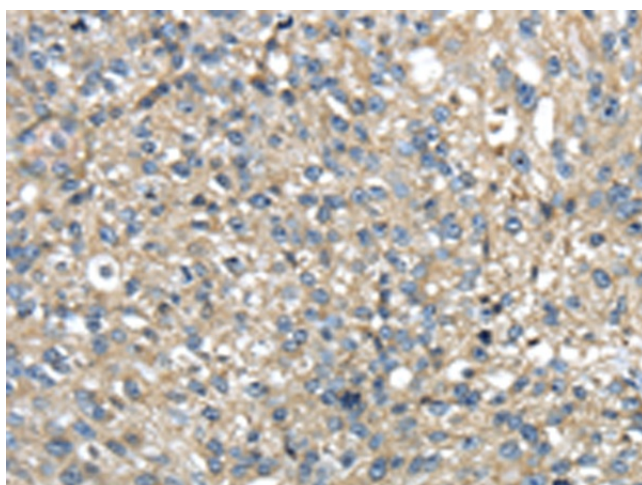
[View online »](#)

Protein Families: Druggable Genome, Transmembrane

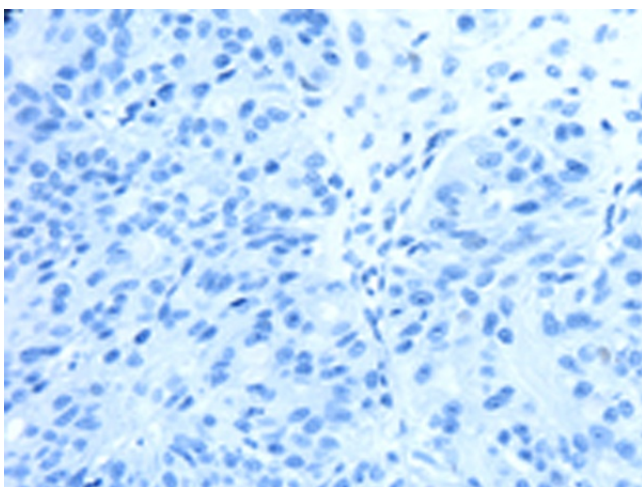
Product images:



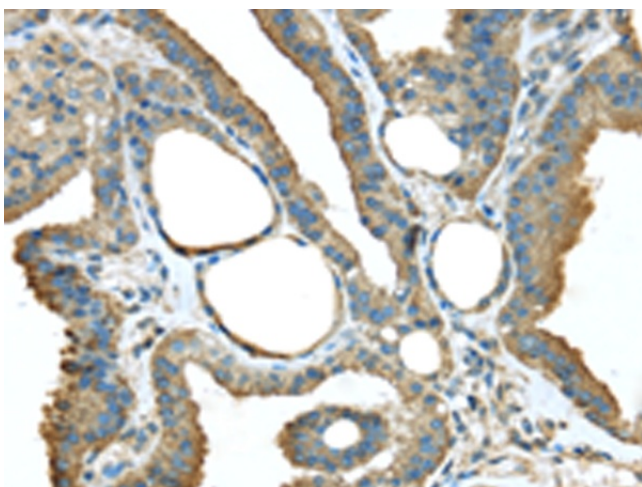
Gel: 12%SDS-PAGE
Lysate: 40 µg
Lane 1-4: A172 cells
231 cells
Human normal stomach tissue
HeLa cells
Primary antibody: [TA350514] (TMED1 Antibody)
at dilution 1/400
Secondary antibody: Goat anti rabbit IgG at
1/8000 dilution
Exposure time: 40 seconds



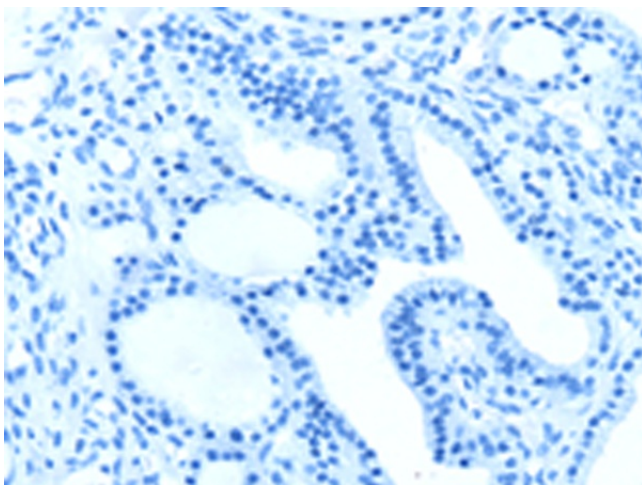
Immunohistochemistry of paraffin-embedded
Human breast cancer tissue using [TA350514]
(TMED1 Antibody) at dilution 1/35 (Original
magnification: x200)



Immunohistochemistry of paraffin-embedded Human breast cancer tissue using [TA350514] (TMED1 Antibody) at dilution 1/35, treated with fusion protein. (Original magnification: $\times 200$)



Immunohistochemistry of paraffin-embedded Human thyroid cancer tissue using [TA350514] (TMED1 Antibody) at dilution 1/35 (Original magnification: $\times 200$)



Immunohistochemistry of paraffin-embedded Human thyroid cancer tissue using [TA350514] (TMED1 Antibody) at dilution 1/35, treated with fusion protein. (Original magnification: $\times 200$)