

## Product datasheet for **TA350514**

### TMED1 Rabbit Polyclonal Antibody

#### Product data:

Product Type:	Primary Antibodies
Applications:	IHC, WB
Recommended Dilution:	WB: 500-2000 WB positive control: A172 and 231 cells, Human normal stomach tissue and Hela cells IHC: 25-100 Positive control: Human breast cancer Predicted cell location: Cytoplasm
Reactivity:	Human, Mouse, Rat
Host:	Rabbit
Isotype:	IgG
Clonality:	Polyclonal
Immunogen:	Fusion protein of human TMED1
Formulation:	pH7.4 PBS, 0.05% NaN <sub>3</sub> , 40% Glycerol
Concentration:	lot specific
Purification:	Antigen affinity purification
Conjugation:	Unconjugated
Storage:	Store at -20°C as received.
Stability:	Stable for 12 months from date of receipt.
Predicted Protein Size:	25 kDa
Gene Name:	transmembrane p24 trafficking protein 1
Database Link:	<a href="#">NP_006849</a> <a href="#">Entrez Gene 17083 Mouse</a> <a href="#">Entrez Gene 315461 Rat</a> <a href="#">Entrez Gene 11018 Human</a> <a href="#">Q13445</a>

**Background:** This gene belongs to the TMED (transmembrane emp24 domain-containing) protein family, which is involved in the vesicular trafficking of proteins. The protein encoded by this gene was identified by its interaction with interleukin 1 receptor-like 1 (IL1RL1) and may play a role in innate immunity. This protein lacks any similarity to other interleukin 1 ligands. Alternative splicing results in multiple transcript variants of this gene.

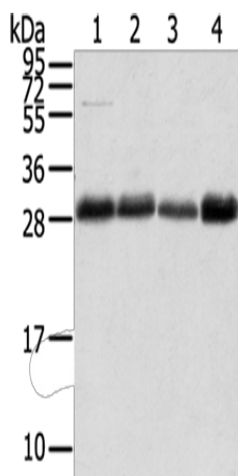


[View online »](#)

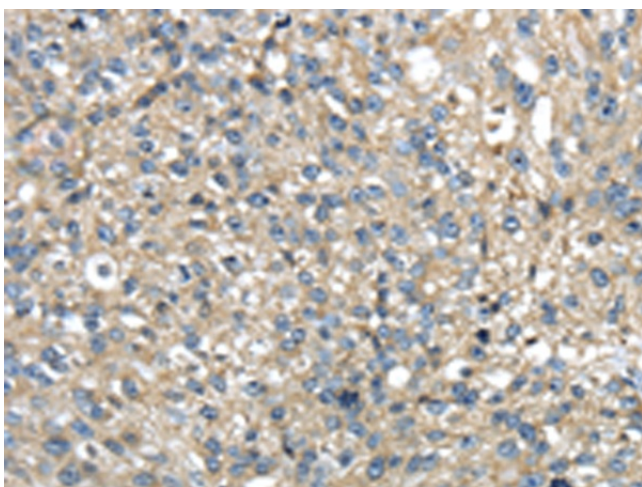
**Synonyms:** IL1r1l1; IL1RL1LG; p24g1; Tp24

**Protein Families:** Druggable Genome, Transmembrane

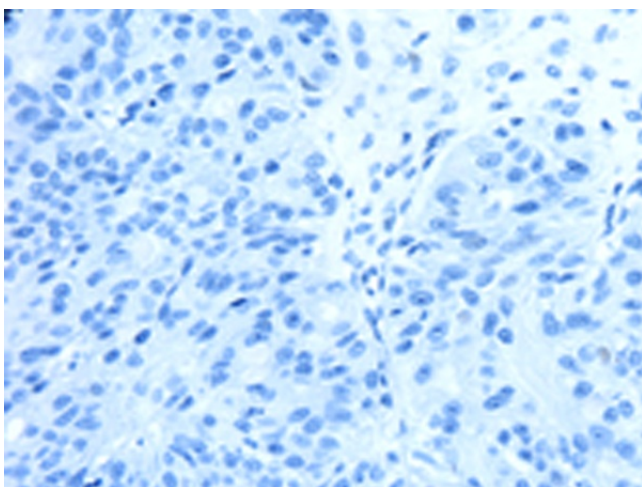
**Product images:**



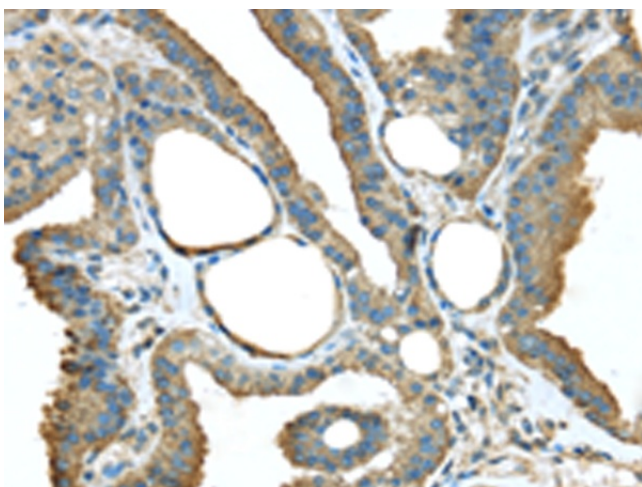
Gel: 12%SDS-PAGE  
Lysate: 40 µg  
Lane 1-4: A172 cells  
231 cells  
Human normal stomach tissue  
Hela cells  
Primary antibody: TA350514 (TMED1 Antibody) at dilution 1/400  
Secondary antibody: Goat anti rabbit IgG at 1/8000 dilution  
Exposure time: 40 seconds



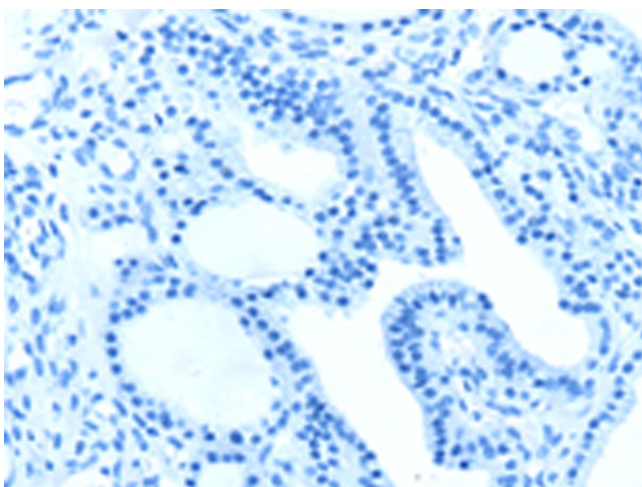
Immunohistochemistry of paraffin-embedded Human breast cancer tissue using TA350514 (TMED1 Antibody) at dilution 1/35 (Original magnification: x200)



Immunohistochemistry of paraffin-embedded Human breast cancer tissue using TA350514 (TMED1 Antibody) at dilution 1/35, treated with fusion protein. (Original magnification: ×200)



Immunohistochemistry of paraffin-embedded Human thyroid cancer tissue using TA350514 (TMED1 Antibody) at dilution 1/35 (Original magnification: ×200)



Immunohistochemistry of paraffin-embedded Human thyroid cancer tissue using TA350514 (TMED1 Antibody) at dilution 1/35, treated with fusion protein. (Original magnification: ×200)