

Product datasheet for **TA350512**

TLK2 Rabbit Polyclonal Antibody

Product data:

Product Type:	Primary Antibodies
Applications:	IHC, WB
Recommended Dilution:	WB: 500-2000 WB positive control: 293T, HT-29, RAW264.7, LOVO, TM4 cell lysates IHC: 50-200 Positive control: Human liver cancer Predicted cell location: Cytoplasm
Reactivity:	Human, Mouse
Host:	Rabbit
Isotype:	IgG
Clonality:	Polyclonal
Immunogen:	Fusion protein of human TLK2
Formulation:	pH7.4 PBS, 0.05% NaN ₃ , 40% Glycerol
Concentration:	lot specific
Purification:	Antigen affinity purification
Conjugation:	Unconjugated
Storage:	Store at -20°C as received.
Stability:	Stable for 12 months from date of receipt.
Gene Name:	tousled like kinase 2
Database Link:	NP_006843 Entrez Gene 24086 Mouse Entrez Gene 11011 Human Q86UE8

Background: This gene encodes a nuclear serine/threonine kinase that was first identified in Arabidopsis. The encoded protein is thought to function in the regulation of chromatin assembly in the S phase of the cell cycle by regulating the levels of a histone H3/H4 chaperone. This protein is associated with double-strand break repair of DNA damage caused by radiation. Pseudogenes of this gene are present on chromosomes 10 and 17. Alternate splicing results in multiple transcript variants.

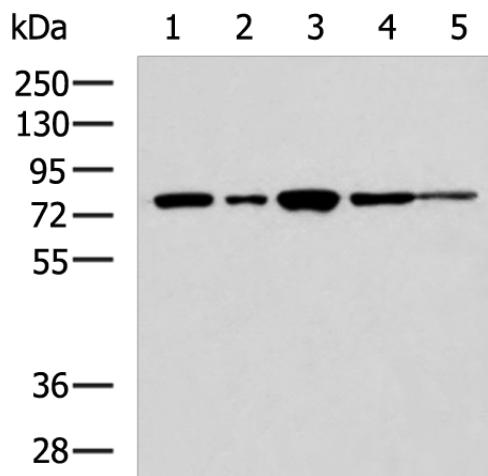


[View online »](#)

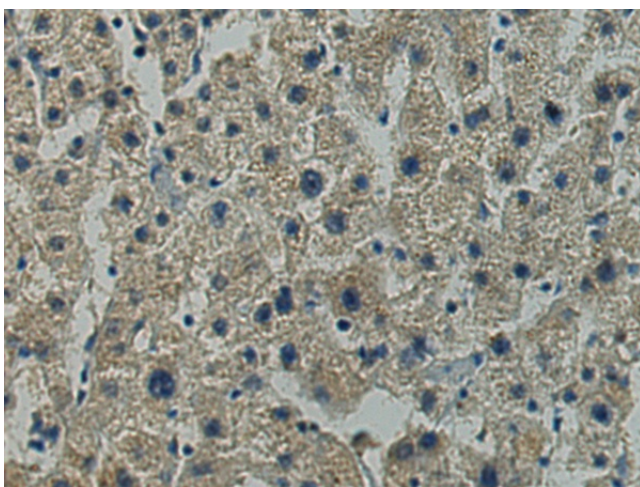
Synonyms: HsHPK; PKU-ALPHA

Protein Families: Druggable Genome, Protein Kinase

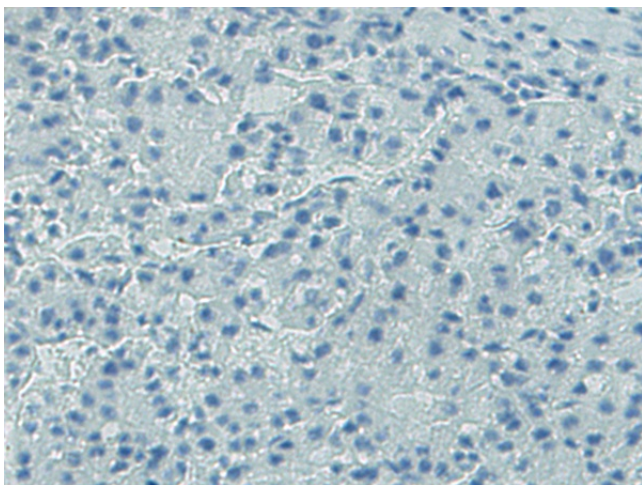
Product images:



Gel: 8%SDS-PAGE
 Lysate: 40 µg
 Lane 1-5: 293T
 HT-29
 RAW264.7
 LOVO
 TM4 cell lysates
 Primary antibody: TA350512 (TLK2 Antibody) at dilution 1/650
 Secondary antibody: Goat anti rabbit IgG at 1/5000 dilution
 Exposure time: 10 seconds



Immunohistochemistry of paraffin-embedded Human liver cancer tissue using TA350512 (TLK2 Antibody) at dilution 1/120 (Original magnification: ×200)



Immunohistochemistry of paraffin-embedded Human liver cancer tissue using TA350512 (TLK2 Antibody) at dilution 1/120, treated with fusion protein. (Original magnification: $\times 200$)