

## Product datasheet for **TA350511S**

### TKTL1 Rabbit Polyclonal Antibody

#### Product data:

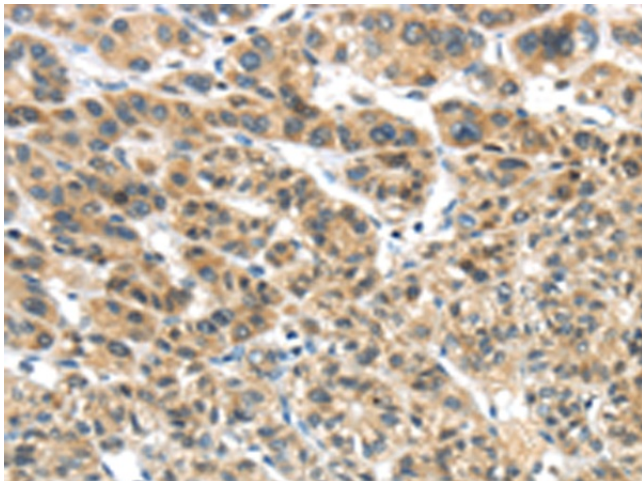
Product Type:	Primary Antibodies
Applications:	IHC
Recommended Dilution:	IHC: 30-150 Positive control: Human liver cancer Predicted cell location: Cytoplasm or Nucleus
Reactivity:	Human
Host:	Rabbit
Isotype:	IgG
Clonality:	Polyclonal
Immunogen:	Fusion protein of human TKTL1
Formulation:	pH7.4 PBS, 0.05% NaN3, 40% GlycerolIn
Purification:	Antigen affinity purification
Conjugation:	Unconjugated
Storage:	Store at -20°C as received.
Stability:	Stable for 12 months from date of receipt.
Gene Name:	transketolase-like 1
Database Link:	<a href="#">NP_036385</a> <a href="#">Entrez Gene 8277 Human</a> <a href="#">P51854</a>

**Background:** The protein encoded by this gene is a transketolase that acts as a homodimer and catalyzes the conversion of sedoheptulose 7-phosphate and D-glyceraldehyde 3-phosphate to D-ribose 5-phosphate and D-xylulose 5-phosphate. This reaction links the pentose phosphate pathway with the glycolytic pathway. Variations in this gene may be the cause of Wernicke-Korsakoff syndrome. Three transcript variants encoding different isoforms have been found for this gene.

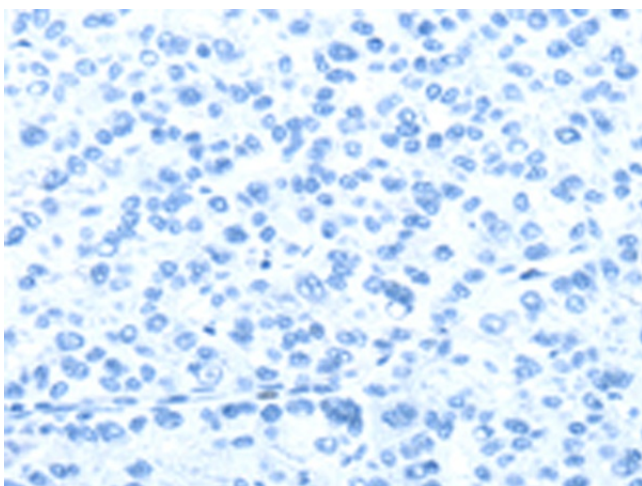
<b>Synonyms:</b>	TKR; TKT2
<b>Protein Families:</b>	Druggable Genome
<b>Protein Pathways:</b>	Metabolic pathways, Pentose phosphate pathway



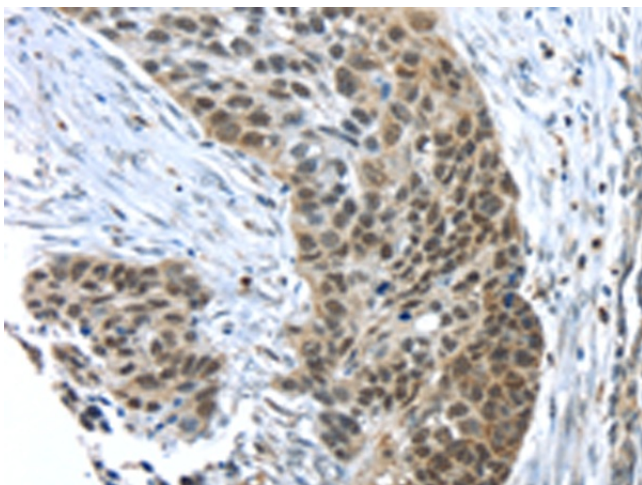
[View online »](#)

**Product images:**

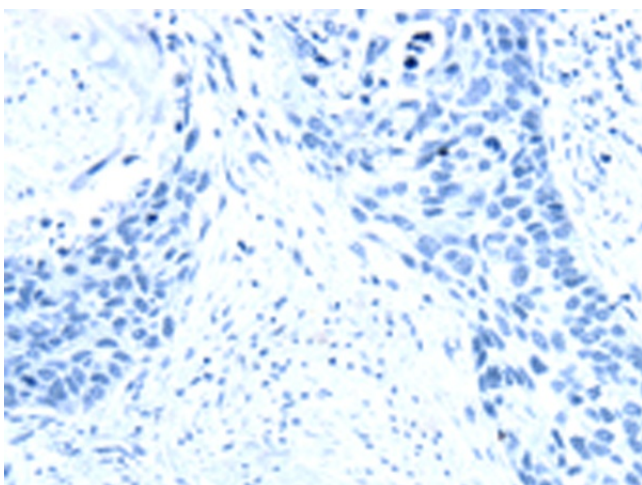
Immunohistochemistry of paraffin-embedded Human liver cancer tissue using [TA350511] (TKTL1 Antibody) at dilution 1/40 (Original magnification:  $\times 200$ )



Immunohistochemistry of paraffin-embedded Human liver cancer tissue using [TA350511] (TKTL1 Antibody) at dilution 1/40, treated with fusion protein. (Original magnification:  $\times 200$ )



Immunohistochemistry of paraffin-embedded Human esophagus cancer tissue using [TA350511] (TKTL1 Antibody) at dilution 1/40 (Original magnification:  $\times 200$ )



Immunohistochemistry of paraffin-embedded Human esophagus cancer tissue using [TA350511] (TKTL1 Antibody) at dilution 1/40, treated with fusion protein. (Original magnification:  $\times 200$ )