

Product datasheet for **TA350509**

Perilipin 3 (PLIN3) Rabbit Polyclonal Antibody

Product data:

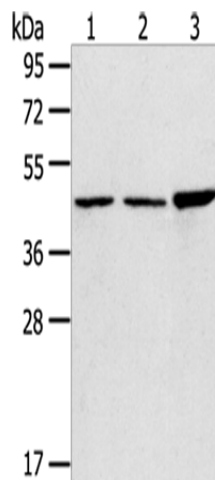
Product Type:	Primary Antibodies
Applications:	IHC, WB
Recommended Dilution:	WB: 500-2000 WB positive control: 293T, 231 and Hela cells IHC: 25-100 Positive control: Human lung cancer Predicted cell location: Cytoplasm and Nucleus
Reactivity:	Human
Host:	Rabbit
Isotype:	IgG
Clonality:	Polyclonal
Immunogen:	Fusion protein of human PLIN3
Formulation:	pH7.4 PBS, 0.05% NaN ₃ , 40% Glycerol
Concentration:	lot specific
Purification:	Antigen affinity purification
Conjugation:	Unconjugated
Storage:	Store at -20°C as received.
Stability:	Stable for 12 months from date of receipt.
Predicted Protein Size:	47 kDa
Gene Name:	perilipin 3
Database Link:	NP_001157666 Entrez Gene 10226 Human O60664
Background:	Mannose 6-phosphate receptors (MPRs) deliver lysosomal hydrolase from the Golgi to endosomes and then return to the Golgi complex. The protein encoded by this gene interacts with the cytoplasmic domains of both cation-independent and cation-dependent MPRs, and is required for endosome-to-Golgi transport.
Synonyms:	M6PRBP1; PP17; TIP47



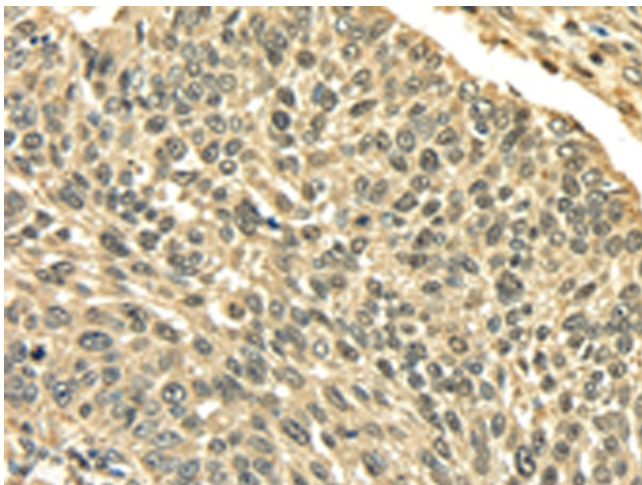
[View online »](#)

Protein Families: Druggable Genome

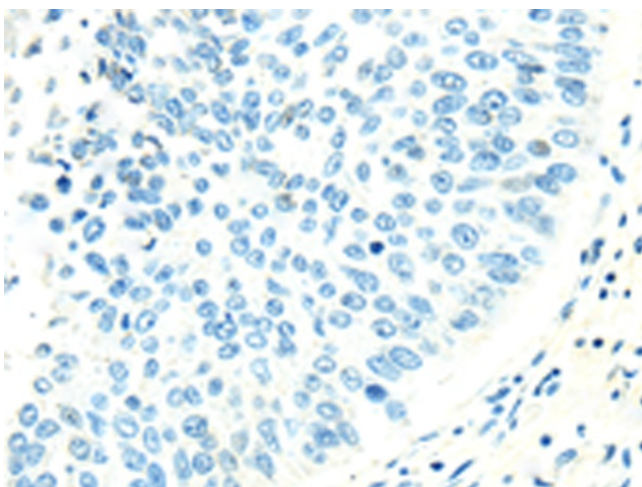
Product images:



Gel: 8%SDS-PAGE
Lysate: 40 µg
Lane 1-3: 293T cells
231 cells
Hela cells
Primary antibody: TA350509 (PLIN3 Antibody) at dilution 1/800
Secondary antibody: Goat anti rabbit IgG at 1/8000 dilution
Exposure time: 3 seconds



Immunohistochemistry of paraffin-embedded Human lung cancer tissue using TA350509 (PLIN3 Antibody) at dilution 1/35 (Original magnification: ×200)



Immunohistochemistry of paraffin-embedded Human lung cancer tissue using TA350509 (PLIN3 Antibody) at dilution 1/35, treated with fusion protein. (Original magnification: $\times 200$)