

## Product datasheet for **TA350508S**

### TIP30 (HTATIP2) Rabbit Polyclonal Antibody

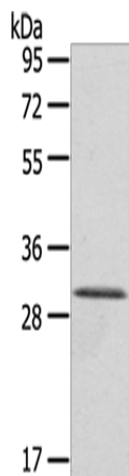
#### Product data:

Product Type:	Primary Antibodies
Applications:	WB
Recommended Dilution:	WB: 500-2000 WB positive control: A431 cells
Reactivity:	Human, Mouse
Host:	Rabbit
Isotype:	IgG
Clonality:	Polyclonal
Immunogen:	Fusion protein of human HTATIP2
Formulation:	pH7.4 PBS, 0.05% NaN <sub>3</sub> , 40% Glycerol
Purification:	Antigen affinity purification
Conjugation:	Unconjugated
Storage:	Store at -20°C as received.
Stability:	Stable for 12 months from date of receipt.
Predicted Protein Size:	27 kDa
Gene Name:	HIV-1 Tat interactive protein 2
Database Link:	<a href="#">NP_006401</a> <a href="#">Entrez Gene 53415 Mouse</a> <a href="#">Entrez Gene 10553 Human</a> <a href="#">Q9BUP3</a>
Background:	TIP30 (30 kDa HIV-1 TAT-interacting protein), also known as HTATIP2 (HIV-1 TAT-interactive protein 2) or CC3, is a ubiquitously expressed protein that functions as an oxidoreductase. It acts as a tumor suppressor participating in metabolic suppression, inhibition of angiogenesis and induction of apoptosis.
Synonyms:	CC3; SDR44U1; TIP30
Protein Families:	Druggable Genome



[View online »](#)

## Product images:



Gel: 8%SDS-PAGE  
Lysate: 40  $\mu$ g  
Lane: A431 cells  
Primary antibody: [TA350508] (HTATIP2 Antibody)  
at dilution 1/800  
Secondary antibody: Goat anti rabbit IgG at  
1/8000 dilution  
Exposure time: 5 seconds