

Product datasheet for **TA350507**

TRIM49 Rabbit Polyclonal Antibody

Product data:

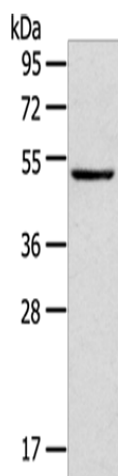
Product Type:	Primary Antibodies
Applications:	IHC, WB
Recommended Dilution:	WB: 500-2000 WB positive control: 293T cells IHC: 30-150 Positive control: Human breast cancer Predicted cell location: Cytoplasm
Reactivity:	Human
Host:	Rabbit
Isotype:	IgG
Clonality:	Polyclonal
Immunogen:	Fusion protein of human TRIM49
Formulation:	pH7.4 PBS, 0.05% NaN ₃ , 40% Glycerol
Concentration:	lot specific
Purification:	Antigen affinity purification
Conjugation:	Unconjugated
Storage:	Store at -20°C as received.
Stability:	Stable for 12 months from date of receipt.
Predicted Protein Size:	53 kDa
Gene Name:	tripartite motif containing 49
Database Link:	NP_065091 Entrez Gene 57093 Human P0CI25
Background:	The protein encoded by this gene contains a RING zinc finger, a motif known to be involved in protein-protein interactions. This gene has been found to be preferentially expressed in testis. Related pseudogenes and gene duplicates have also been identified on chromosome 11.
Synonyms:	RNF18; TRIM49A; TRIM49L2



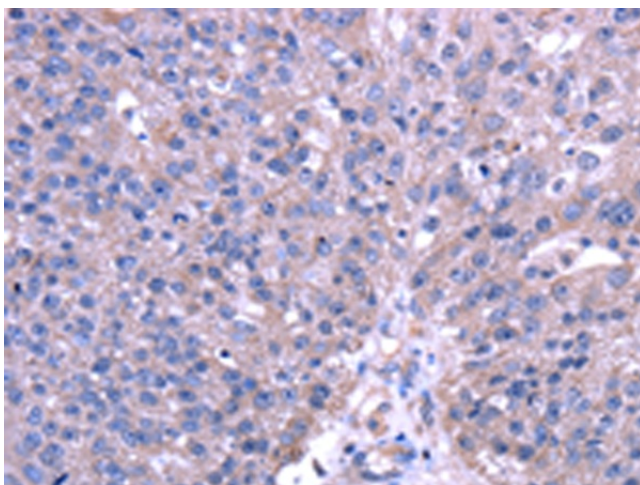
[View online »](#)

Protein Families: Druggable Genome

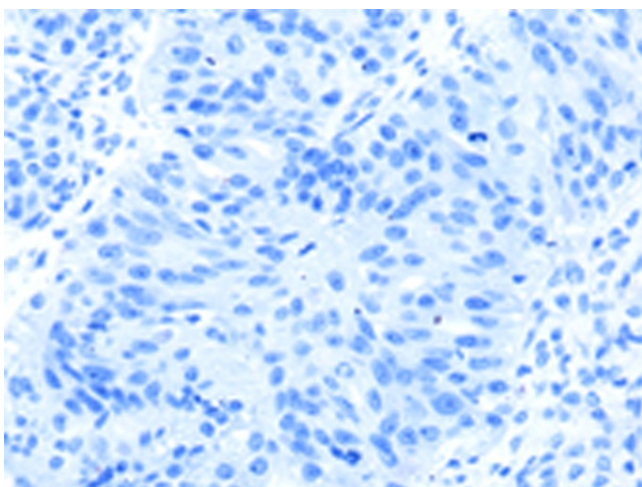
Product images:



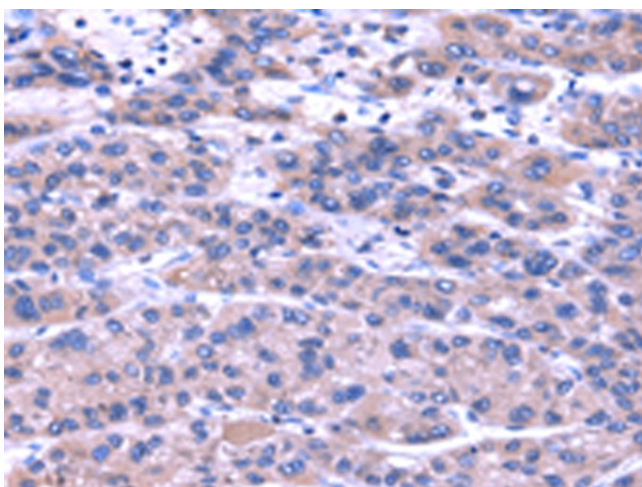
Gel: 8%SDS-PAGE
 Lysate: 40 µg
 Lane: 293T cells
 Primary antibody: TA350507 (TRIM49 Antibody)
 at dilution 1/800
 Secondary antibody: Goat anti rabbit IgG at
 1/8000 dilution
 Exposure time: 3 seconds



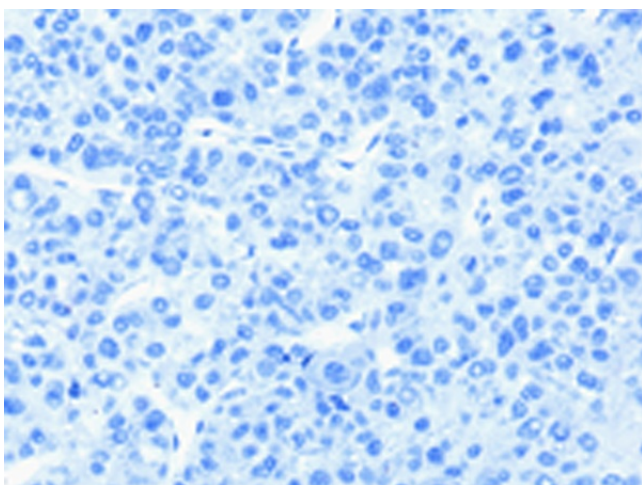
Immunohistochemistry of paraffin-embedded
 Human breast cancer tissue using TA350507
 (TRIM49 Antibody) at dilution 1/40 (Original
 magnification: ×200)



Immunohistochemistry of paraffin-embedded Human breast cancer tissue using TA350507 (TRIM49 Antibody) at dilution 1/40, treated with fusion protein. (Original magnification: ×200)



Immunohistochemistry of paraffin-embedded Human liver cancer tissue using TA350507 (TRIM49 Antibody) at dilution 1/40 (Original magnification: ×200)



Immunohistochemistry of paraffin-embedded Human liver cancer tissue using TA350507 (TRIM49 Antibody) at dilution 1/40, treated with fusion protein. (Original magnification: ×200)