

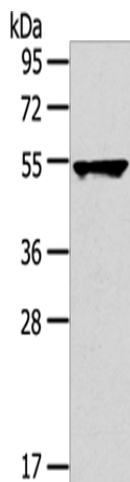
## Product datasheet for **TA350506S**

### TRIM10 Rabbit Polyclonal Antibody

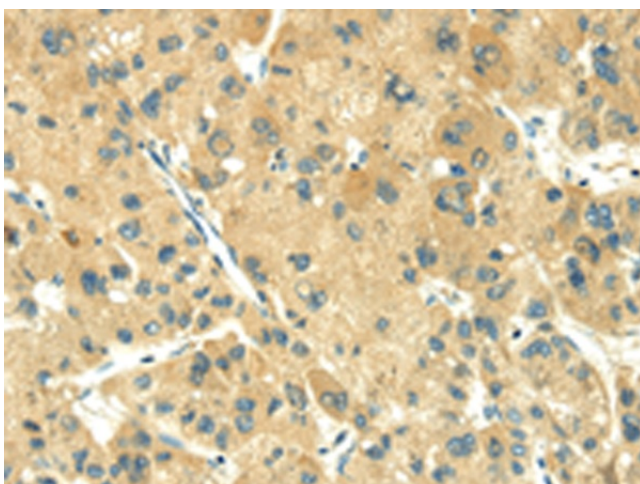
#### Product data:

Product Type:	Primary Antibodies
Applications:	IHC, WB
Recommended Dilution:	WB: 1000-5000 WB positive control: Hela cells IHC: 25-100 Positive control: Human liver cancer Predicted cell location: Cytoplasm
Reactivity:	Human
Host:	Rabbit
Isotype:	IgG
Clonality:	Polyclonal
Immunogen:	Fusion protein of human TRIM10
Formulation:	pH7.4 PBS, 0.05% NaN <sub>3</sub> , 40% Glycerol
Purification:	Antigen affinity purification
Conjugation:	Unconjugated
Storage:	Store at -20°C as received.
Stability:	Stable for 12 months from date of receipt.
Predicted Protein Size:	55 kDa
Gene Name:	tripartite motif containing 10
Database Link:	<a href="#">NP_439893</a> <a href="#">Entrez Gene 10107 Human</a> <a href="#">Q9UDY6</a>
Background:	The protein encoded by this gene is a member of the tripartite motif (TRIM) family. The TRIM motif includes three zinc-binding domains, a RING, a B-box type 1 and a B-box type 2, and a coiled-coil region. This protein localizes to cytoplasmic bodies. Studies in mice suggest that this protein plays a role in terminal differentiation of erythroid cells.
Synonyms:	HERF1; RFB30; RNF9
Protein Families:	Druggable Genome

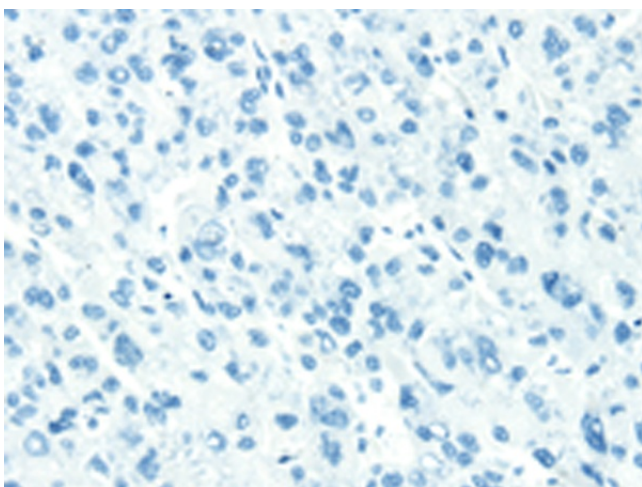

[View online »](#)

**Product images:**


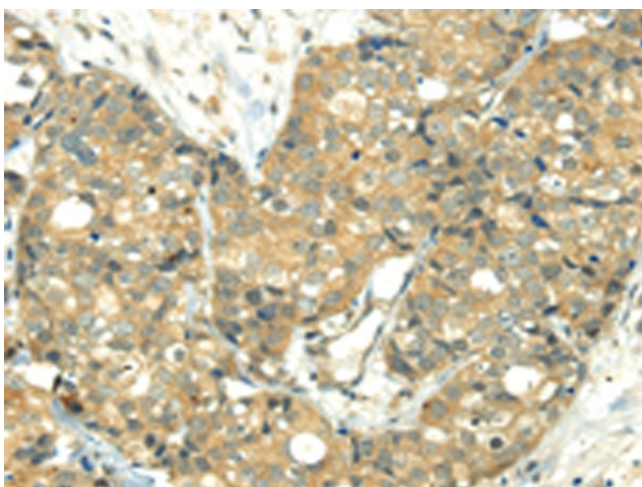
Gel: 8%SDS-PAGE  
 Lysate: 40 µg  
 Lane: Hela cells  
 Primary antibody: [TA350506] (TRIM10 Antibody)  
 at dilution 1/800  
 Secondary antibody: Goat anti rabbit IgG at  
 1/8000 dilution  
 Exposure time: 30 seconds



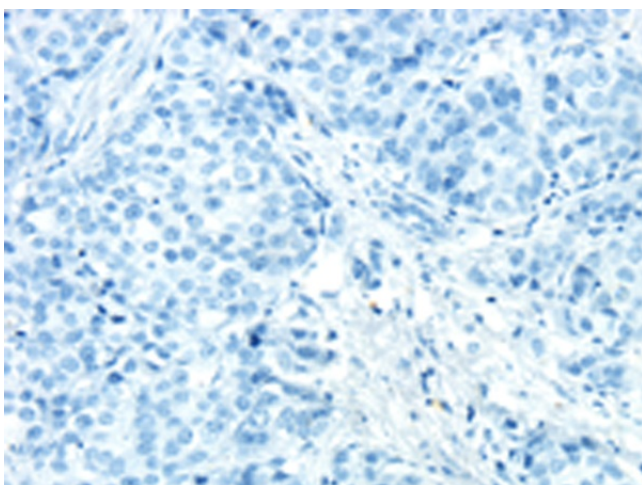
Immunohistochemistry of paraffin-embedded  
 Human liver cancer tissue using [TA350506]  
 (TRIM10 Antibody) at dilution 1/35 (Original  
 magnification: ×200)



Immunohistochemistry of paraffin-embedded Human liver cancer tissue using [TA350506] (TRIM10 Antibody) at dilution 1/35, treated with fusion protein. (Original magnification: ×200)



Immunohistochemistry of paraffin-embedded Human breast cancer tissue using [TA350506] (TRIM10 Antibody) at dilution 1/35 (Original magnification: ×200)



Immunohistochemistry of paraffin-embedded Human breast cancer tissue using [TA350506] (TRIM10 Antibody) at dilution 1/35, treated with fusion protein. (Original magnification: ×200)