

## Product datasheet for **TA350499S**

### prothymosin, alpha (PTMA) Rabbit Polyclonal Antibody

#### Product data:

Product Type:	Primary Antibodies
Applications:	IHC
Recommended Dilution:	IHC: 200-300 Positive control: Human lung cancer Predicted cell location: Nucleus
Reactivity:	Human, Mouse, Rat
Host:	Rabbit
Isotype:	IgG
Clonality:	Polyclonal
Immunogen:	Full length fusion protein
Formulation:	pH7.4 PBS, 0.05% NaN <sub>3</sub> , 40% Glycerol
Purification:	Antigen affinity purification
Conjugation:	Unconjugated
Storage:	Store at -20°C as received.
Stability:	Stable for 12 months from date of receipt.
Gene Name:	prothymosin, alpha
Database Link:	<a href="#">NP_002814</a> <a href="#">Entrez Gene 19231 Mouse</a> <a href="#">Entrez Gene 29222 Rat</a> <a href="#">Entrez Gene 5757 Human</a> <a href="#">P06454</a>

**Background:** Prothymosin alpha (PTMA) is a nuclear protein possessing a number of cellular functions including cell survival. PTMA is identified to be localized in the nuclei of neurons, while it is found in both nuclei and cytoplasm in the astrocytes and microglia of adult brain. PTMA inhibits the neuronal necrosis induced by serum-free starvation or ischemia-reperfusion stress, which causes a rapid internalization of GLUT1/4, leading to a decrease in glucose uptake and cellular ATP levels. Extensive research on PTMA showed that it is of clinical significance and potential medical use as they may serve as a molecular marker for cancer prognosis and/or as therapeutic agents for treating immunodeficiencies, autoimmune diseases and malignancies.

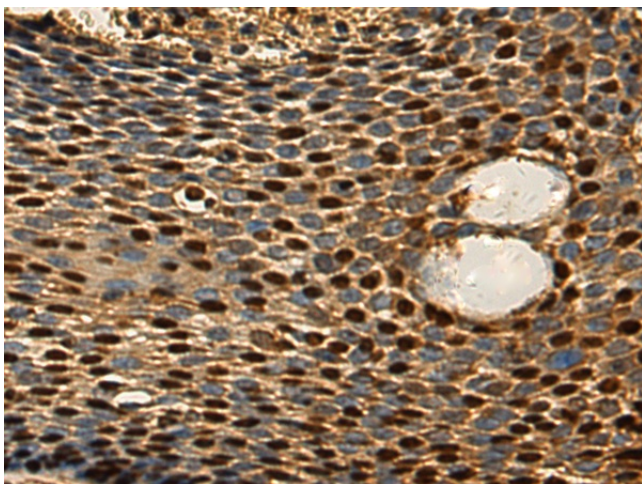


[View online »](#)

Synonyms: TMSA

Protein Families: Druggable Genome, Stem cell - Pluripotency, Transcription Factors

### Product images:



Immunohistochemistry of paraffin-embedded Human lung cancer tissue using [TA350499] (PTMA Antibody) at dilution 1/180 (Original magnification:  $\times 200$ )



Immunohistochemistry of paraffin-embedded Human lung cancer tissue using [TA350499] (PTMA Antibody) at dilution 1/180, treated with fusion protein. (Original magnification:  $\times 200$ )