

## Product datasheet for **TA350498**

### THRSP Rabbit Polyclonal Antibody

#### Product data:

Product Type:	Primary Antibodies
Applications:	IHC, WB
Recommended Dilution:	WB: 1000-5000 WB positive control: Human normal liver tissue IHC: 25-100 Positive control: Human thyroid cancer Predicted cell location: Cytoplasm
Reactivity:	Human, Mouse, Rat
Host:	Rabbit
Isotype:	IgG
Clonality:	Polyclonal
Immunogen:	Full length fusion protein
Formulation:	pH7.4 PBS, 0.05% NaN <sub>3</sub> , 40% Glycerol
Concentration:	lot specific
Purification:	Antigen affinity purification
Conjugation:	Unconjugated
Storage:	Store at -20°C as received.
Stability:	Stable for 12 months from date of receipt.
Predicted Protein Size:	17 kDa
Gene Name:	thyroid hormone responsive
Database Link:	<a href="#">NP_003242</a> <a href="#">Entrez Gene 7069 Human</a> <a href="#">Q92748</a>

**Background:** The protein encoded by this gene is similar to the gene product of S14, a rat gene whose expression is limited to liver and adipose tissue and is controlled by nutritional and hormonal factors. This gene has been shown to be expressed in liver and adipocytes, particularly in lipomatous modules. It is also found to be expressed in lipogenic breast cancers, which suggests a role in controlling tumor lipid metabolism.

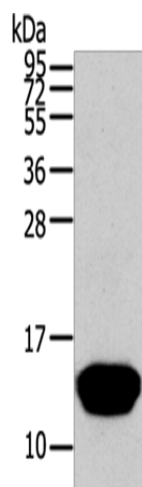


[View online »](#)

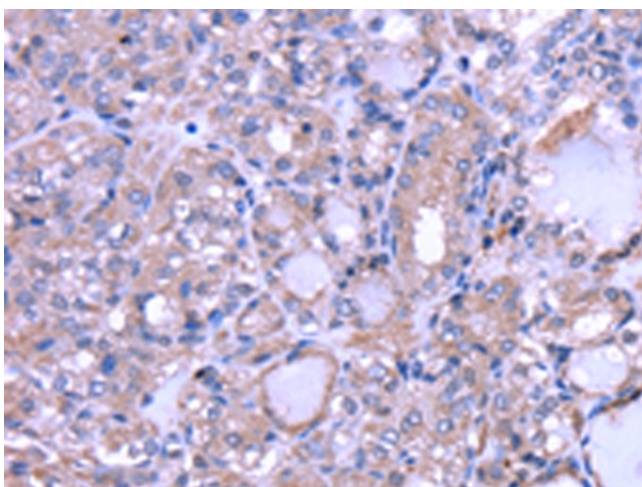
**Synonyms:** Lpgp; LPGP1; S14; SPOT14; THRP

**Protein Families:** Transcription Factors

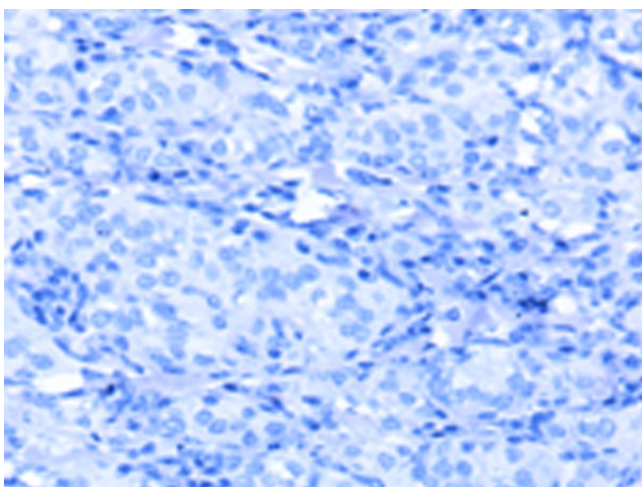
**Product images:**



Gel: 12%SDS-PAGE  
Lysate: 40  $\mu$ g  
Lane: Human normal liver tissue  
Primary antibody: TA350498 (THRSP Antibody) at dilution 1/400  
Secondary antibody: Goat anti rabbit IgG at 1/8000 dilution  
Exposure time: 1 minute



Immunohistochemistry of paraffin-embedded Human thyroid cancer tissue using TA350498 (THRSP Antibody) at dilution 1/30 (Original magnification:  $\times$ 200)



Immunohistochemistry of paraffin-embedded Human thyroid cancer tissue using TA350498 (THRSP Antibody) at dilution 1/30, treated with fusion protein. (Original magnification: ×200)